

## Product datasheet

### Anti-AFM antibody ab152141

4 Images

#### Overview

<b>Product name</b>	Anti-AFM antibody
<b>Description</b>	Rabbit polyclonal to AFM
<b>Host species</b>	Rabbit
<b>Tested applications</b>	<b>Suitable for:</b> WB, IHC-P, ICC/IF
<b>Species reactivity</b>	<b>Reacts with:</b> Mouse, Human
<b>Immunogen</b>	Recombinant fragment, corresponding to a region within amino acids 383-617 of Human AFM.
<b>Positive control</b>	293T, A431, HeLa, HepG2, NIH 3T3, JC and BCL-1 whole cell lysates; Cal27 xenograft tissue; HeLa cells.
<b>General notes</b>	<p>The Life Science industry has been in the grips of a reproducibility crisis for a number of years. Abcam is leading the way in addressing this with our range of recombinant monoclonal antibodies and knockout edited cell lines for gold-standard validation. Please check that this product meets your needs before purchasing.</p> <p>If you have any questions, special requirements or concerns, please send us an inquiry and/or contact our Support team ahead of purchase. Recommended alternatives for this product can be found below, along with publications, customer reviews and Q&amp;As</p>

#### Properties

<b>Form</b>	Liquid
<b>Storage instructions</b>	Shipped at 4°C. Upon delivery aliquot. Store at -20°C or -80°C. Avoid freeze / thaw cycle.
<b>Storage buffer</b>	<p>pH: 7.00</p> <p>Preservative: 0.01% Thimerosal (merthiolate)</p> <p>Constituents: 79.99% PBS, 20% Glycerol (glycerin, glycerine)</p>
<b>Purity</b>	Immunogen affinity purified
<b>Clonality</b>	Polyclonal
<b>Isotype</b>	IgG

#### Applications

**The Abpromise guarantee** Our **Abpromise guarantee** covers the use of ab152141 in the following tested applications.

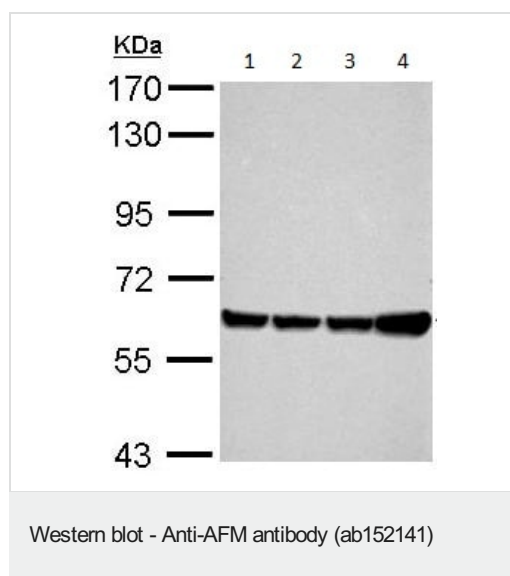
The application notes include recommended starting dilutions; optimal dilutions/concentrations should be determined by the end user.

Application	Abreviews	Notes
WB		1/1000 - 1/10000. Predicted molecular weight: 69 kDa.
IHC-P		1/100 - 1/1000.
ICC/IF		1/100 - 1/1000.

## Target

<b>Function</b>	Vitamin E binding protein. May transport vitamin E in body fluids under conditions where the lipoprotein system is not sufficient or across the blood-brain barrier.
<b>Sequence similarities</b>	Belongs to the ALB/AFP/VDB family. Contains 3 albumin domains.
<b>Post-translational modifications</b>	N-glycosylated.
<b>Cellular localization</b>	Secreted.

## Images



**All lanes :** Anti-AFM antibody (ab152141) at 1/5000 dilution

**Lane 1 :** 293T whole cell lysate

**Lane 2 :** A431 whole cell lysate

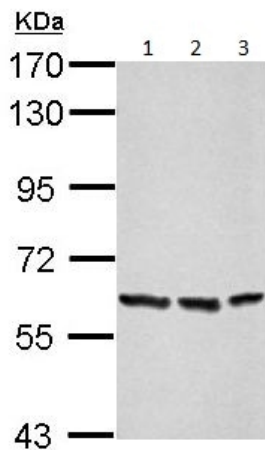
**Lane 3 :** HeLa whole cell lysate

**Lane 4 :** HepG2 whole cell lysate

Lysates/proteins at 30 µg per lane.

**Predicted band size:** 69 kDa

7.5% SDS PAGE



Western blot - Anti-AFM antibody (ab152141)

**All lanes :** Anti-AFM antibody (ab152141) at 1/5000 dilution

**Lane 1 :** NIH 3T3 whole cell lysate

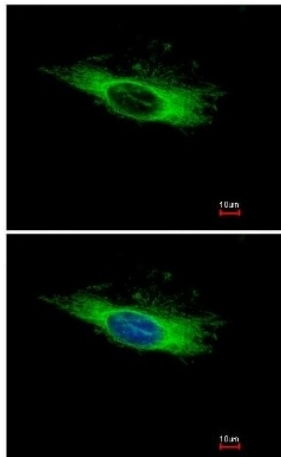
**Lane 2 :** JC whole cell lysate

**Lane 3 :** BCL-1 whole cell lysate

Lysates/proteins at 30 µg per lane.

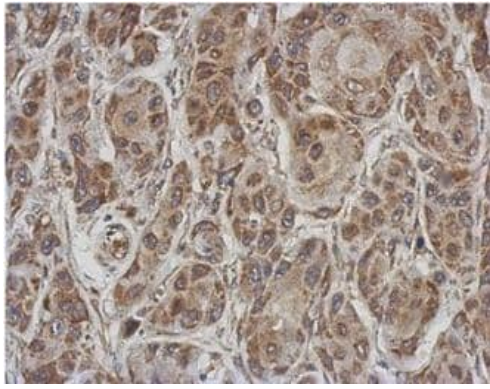
**Predicted band size:** 69 kDa

7.5% SDS PAGE



Immunocytochemistry/ Immunofluorescence - Anti-AFM antibody (ab152141)

Immunofluorescent analysis of methanol-fixed HeLa cells labeling AFM with ab152141 at 1/500 dilution. Lower image co-stained with Hoechst 33342.



Immunohistochemical analysis of paraffin-embedded Cal27 (human) xenograft labeling AFM with ab152141 at 1/500 dilution.

Immunohistochemistry (Formalin/PFA-fixed paraffin-embedded sections) - Anti-AFM antibody (ab152141)

**Please note:** All products are "FOR RESEARCH USE ONLY. NOT FOR USE IN DIAGNOSTIC PROCEDURES"

#### Our Abpromise to you: Quality guaranteed and expert technical support

---

- Replacement or refund for products not performing as stated on the datasheet
- Valid for 12 months from date of delivery
- Response to your inquiry within 24 hours
- We provide support in Chinese, English, French, German, Japanese and Spanish
- Extensive multi-media technical resources to help you
- We investigate all quality concerns to ensure our products perform to the highest standards

If the product does not perform as described on this datasheet, we will offer a refund or replacement. For full details of the Abpromise, please visit <https://www.abcam.com/abpromise> or contact our technical team.

#### Terms and conditions

---

- Guarantee only valid for products bought direct from Abcam or one of our authorized distributors