





Product datasheet

Anti-Aftiphilin antibody ab122239

2 Images

Overview

Product name	Anti-Aftiphilin antibody
Description	Rabbit polyclonal to Aftiphilin
Host species	Rabbit
Tested applications	Suitable for: ICC/IF, IHC-P
Species reactivity	Reacts with: Human
Immunogen	antigen sequence: RENNKINRVN ELNSVKEVAL GRSLDNKGDT DGEDQVCVSE ISVTNRGFS VEKQGLPTLQ QDEFLLQSGVQ SK, corresponding to amino acids 262-333 of Human Aftiphilin.  Run BLAST with   Run BLAST with 
Positive control	Human smooth muscle tissue; Human cell line U-2 OS
General notes	<p>ab122239 is mono-specific.</p> <p>The Life Science industry has been in the grips of a reproducibility crisis for a number of years. Abcam is leading the way in addressing this with our range of recombinant monoclonal antibodies and knockout edited cell lines for gold-standard validation. Please check that this product meets your needs before purchasing.</p> <p>If you have any questions, special requirements or concerns, please send us an inquiry and/or contact our Support team ahead of purchase. Recommended alternatives for this product can be found below, along with publications, customer reviews and Q&As</p>

Properties

Form	Liquid
Storage instructions	Shipped at 4°C. Upon delivery aliquot and store at -20°C. Avoid freeze / thaw cycles.
Storage buffer	pH: 7.2 Preservative: 0.02% Sodium azide Constituents: 59% PBS, 40% Glycerol (glycerin, glycerine)
Purity	Immunogen affinity purified
Primary antibody notes	ab122239 is mono-specific.
Clonality	Polyclonal

Isotype

IgG

Applications

The Abpromise guarantee

Our **Abpromise guarantee** covers the use of ab122239 in the following tested applications.

The application notes include recommended starting dilutions; optimal dilutions/concentrations should be determined by the end user.

Application	Abreviews	Notes
ICC/IF		Use a concentration of 0.25 - 2 µg/ml.
IHC-P		1/500 - 1/1000. Perform heat mediated antigen retrieval with citrate buffer pH 6 before commencing with IHC staining protocol.

Target

Function

May play a role in membrane trafficking.

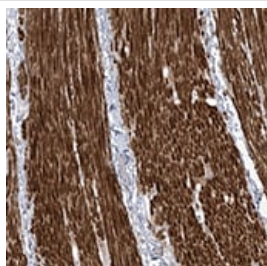
Domain

The WXXF motifs mediate binding of accessory proteins to the ear-domain of AP-1, GGAs and AP-2 through hydrophobic interactions. Selective binding to the GAE domains of AP-1 or to the alpha-ear domain of AP-2 is tuned by the acidic context surrounding the motif and the properties of the second residue of the motif itself.

Cellular localization

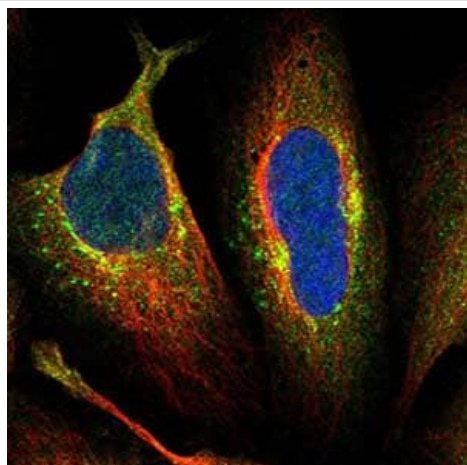
Cytoplasm. Colocalizes with AP1G1 and clathrin.

Images



ab122239, at 1/500 dilution, staining Aftiphilin in paraffin-embedded Human smooth muscle by Immunohistochemistry.

Immunohistochemistry (Formalin/PFA-fixed paraffin-embedded sections) - Anti-Aftiphilin antibody (ab122239)



Immunocytochemistry/ Immunofluorescence - Anti-Aftiphilin antibody (ab122239)

ab122239, at 4µg/ml, staining Aftiphilin in Human cell line U-2 OS by Immunofluorescence. Antibody staining is shown in green.

Please note: All products are "FOR RESEARCH USE ONLY. NOT FOR USE IN DIAGNOSTIC PROCEDURES"

Our Abpromise to you: Quality guaranteed and expert technical support

- Replacement or refund for products not performing as stated on the datasheet
- Valid for 12 months from date of delivery
- Response to your inquiry within 24 hours
- We provide support in Chinese, English, French, German, Japanese and Spanish
- Extensive multi-media technical resources to help you
- We investigate all quality concerns to ensure our products perform to the highest standards

If the product does not perform as described on this datasheet, we will offer a refund or replacement. For full details of the Abpromise, please visit <https://www.abcam.com/abpromise> or contact our technical team.

Terms and conditions

- Guarantee only valid for products bought direct from Abcam or one of our authorized distributors