

Anti-AIFM3 antibody ab106359

[1 References](#) [3 Images](#)

Overview

Product name	Anti-AIFM3 antibody
Description	Rabbit polyclonal to AIFM3
Host species	Rabbit
Tested applications	Suitable for: WB, IHC-P
Species reactivity	Reacts with: Human
Immunogen	Synthetic peptide corresponding to Human AIFM3 (N terminal). 16 amino acid peptide Database link: Q96NN9
Positive control	Human tissue lysates and Human brain tissue
General notes	<p>The Life Science industry has been in the grips of a reproducibility crisis for a number of years. Abcam is leading the way in addressing this with our range of recombinant monoclonal antibodies and knockout edited cell lines for gold-standard validation. Please check that this product meets your needs before purchasing.</p> <p>If you have any questions, special requirements or concerns, please send us an inquiry and/or contact our Support team ahead of purchase. Recommended alternatives for this product can be found below, along with publications, customer reviews and Q&As</p>

Properties

Form	Liquid
Storage instructions	Shipped at 4°C. Store at 4°C (stable for up to 12 months).
Storage buffer	pH: 7.2 Preservative: 0.02% Sodium azide Constituent: 2.68% PBS
Purity	Immunogen affinity purified
Clonality	Polyclonal
Isotype	IgG

Applications

The Abpromise guarantee Our [Abpromise guarantee](#) covers the use of ab106359 in the following tested applications.

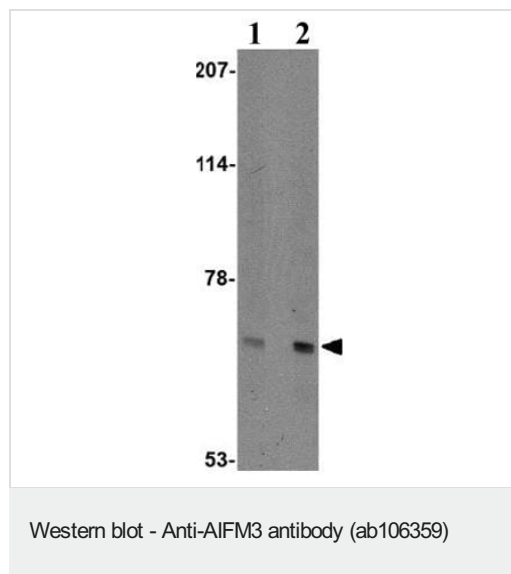
The application notes include recommended starting dilutions; optimal dilutions/concentrations should be determined by the end user.

Application	Abreviews	Notes
WB		Use a concentration of 1 - 2 µg/ml. Predicted molecular weight: 67 kDa.
IHC-P		Use a concentration of 2.5 µg/ml. Perform heat mediated antigen retrieval via the microwave method before commencing with IHC staining protocol.

Target

Function	Induces apoptosis through a caspase dependent pathway. Reduces mitochondrial membrane potential.
Tissue specificity	Ubiquitous. Expressed in bone marrow, cerebral cortex, liver, ovary, thymus, thyroid gland and tongue (at protein level).
Sequence similarities	Belongs to the FAD-dependent oxidoreductase family. Contains 1 Rieske domain.
Domain	The Rieske domain induces apoptosis.
Cellular localization	Mitochondrion. Does not translocate to the nucleus upon induction of apoptosis.

Images



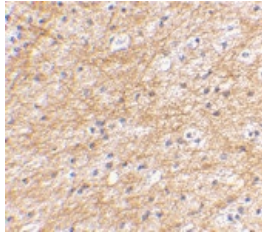
Lane 1 : Anti-AIFM3 antibody (ab106359) at 1 µg/ml

Lane 2 : Anti-AIFM3 antibody (ab106359) at 2 µg/ml

All lanes : Human brain tissue lysate

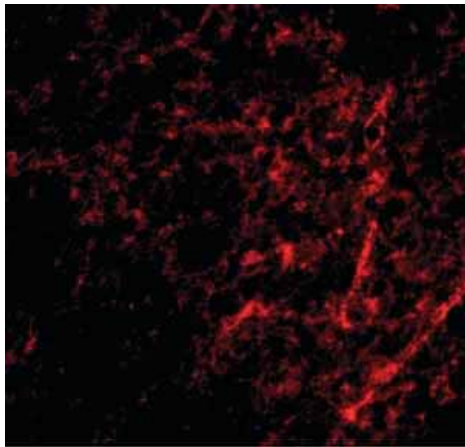
Lysates/proteins at 15 µg per lane.

Predicted band size: 67 kDa



Immunohistochemical staining of human brain tissue using ab106359 at 2.5 µg

Immunohistochemistry (Formalin/PFA-fixed paraffin-embedded sections) - Anti-AIFM3 antibody (ab106359)



Immunohistochemistry of AIFM3 in Human brain tissue with ab106359 at 20 µg/mL.

Immunohistochemistry (Formalin/PFA-fixed paraffin-embedded sections) - Anti-AIFM3 antibody (ab106359)

Please note: All products are "FOR RESEARCH USE ONLY. NOT FOR USE IN DIAGNOSTIC PROCEDURES"

Our Abpromise to you: Quality guaranteed and expert technical support

- Replacement or refund for products not performing as stated on the datasheet
- Valid for 12 months from date of delivery
- Response to your inquiry within 24 hours
- We provide support in Chinese, English, French, German, Japanese and Spanish
- Extensive multi-media technical resources to help you
- We investigate all quality concerns to ensure our products perform to the highest standards

If the product does not perform as described on this datasheet, we will offer a refund or replacement. For full details of the Abpromise, please visit <https://www.abcam.com/abpromise> or contact our technical team.

Terms and conditions

- Guarantee only valid for products bought direct from Abcam or one of our authorized distributors