


Product datasheet

Anti-Ajuba antibody ab244285

[1 References](#) [7 Images](#)

Overview

Product name	Anti-Ajuba antibody
Description	Rabbit polyclonal to Ajuba
Host species	Rabbit
Tested applications	Suitable for: WB, ICC/IF, IHC-P
Species reactivity	Reacts with: Human Predicted to work with: Mouse, Cow 
Immunogen	Recombinant fragment corresponding to Human Ajuba aa 200-350. Database link: Q96IF1 Run BLAST with Run BLAST with
Positive control	IHC-P: Human esophagus, fallopian tube, kidney, skin and placenta tissue. WB: HepG2 cell lysate; Ajuba overexpression HEK-293T lysate. ICC/IF: U-251 MG cells.
General notes	<p>The Life Science industry has been in the grips of a reproducibility crisis for a number of years. Abcam is leading the way in addressing this with our range of recombinant monoclonal antibodies and knockout edited cell lines for gold-standard validation. Please check that this product meets your needs before purchasing.</p> <p>If you have any questions, special requirements or concerns, please send us an inquiry and/or contact our Support team ahead of purchase. Recommended alternatives for this product can be found below, along with publications, customer reviews and Q&As</p>

Properties

Form	Liquid
Storage instructions	Shipped at 4°C. Store at +4°C short term (1-2 weeks). Upon delivery aliquot. Store at -20°C long term. Avoid freeze / thaw cycle.
Storage buffer	pH: 7.20 Preservative: 0.02% Sodium azide Constituents: PBS, 40% Glycerol (glycerin, glycerine)
Purity	Immunogen affinity purified
Clonality	Polyclonal
Isotype	IgG

Applications

The Abpromise guarantee Our **Abpromise guarantee** covers the use of ab244285 in the following tested applications. The application notes include recommended starting dilutions; optimal dilutions/concentrations should be determined by the end user.

Application	Abreviews	Notes
WB		Use a concentration of 0.04 - 0.4 µg/ml. Predicted molecular weight: 57 kDa.
ICC/IF		Use a concentration of 0.25 - 2 µg/ml. Fixation/Permeabilization: PFA/Triton X-100.
IHC-P		1/50 - 1/200. Perform heat mediated antigen retrieval with citrate buffer pH 6 before commencing with IHC staining protocol.

Target

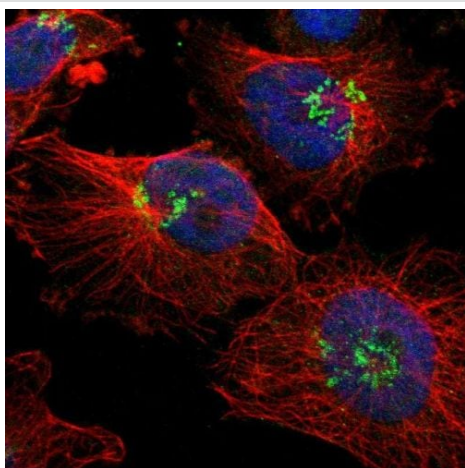
Relevance

Ajuba is a member of LIM domain containing proteins that contribute to cell fate determination and regulate cell proliferation and differentiation. Ajuba is also involved in the regulation of actin cytoskeleton dynamics and cell migration. Ajuba plays a important role in the regulation of the kinase activity of AURKA/Aurora A for mitotic commitment. Is also a component of the IL 1 signaling pathway modulating IL 1 induced NF kappa B activation by influencing the assembly and activity of the PRKCZ/SQSTM1/TRAF6 multiprotein signaling complex. Ajuba is also a negative regulator of the Wnt signaling pathway.

Cellular localization

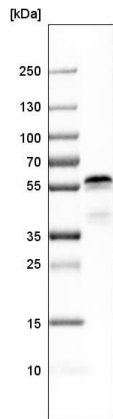
Cytoplasm, cytoskeleton. Cell membrane. Cell junction. Nucleus. Centrosome. Note: Shuttles between the cytoplasm and the nucleus.

Images



PFA-fixed, Triton X-100 permeabilized U-251 MG (human brain glioma cell line) cells stained for Ajuba (green) using ab244285 at 4 µg/ml in ICC/IF.

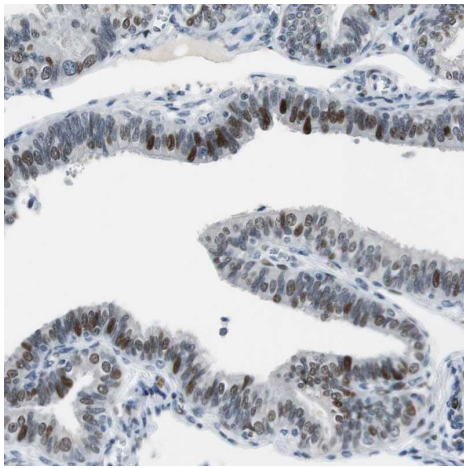
Immunocytochemistry/ Immunofluorescence - Anti-Ajuba antibody (ab244285)



Western blot - Anti-Ajuba antibody (ab244285)

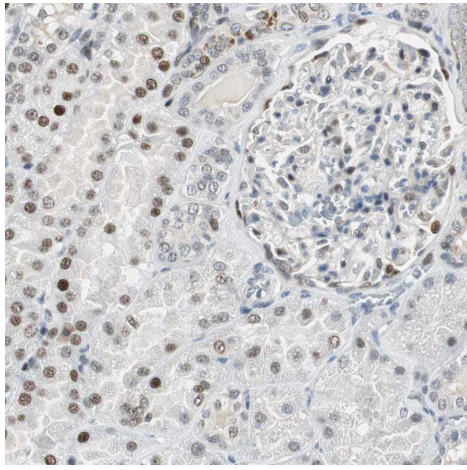
Anti-Ajuba antibody (ab244285) at 0.4 $\mu\text{g/ml}$ + HepG2 (human liver hepatocellular carcinoma cell line) cell lysate

Predicted band size: 57 kDa



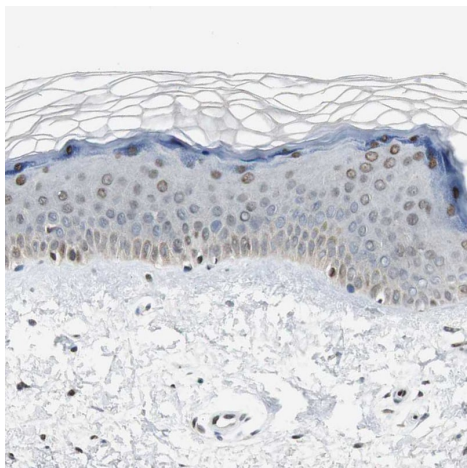
Immunohistochemistry (Formalin/PFA-fixed paraffin-embedded sections) - Anti-Ajuba antibody (ab244285)

Immunohistochemical staining of human Fallopian tube shows strong nuclear positivity in glandular cells.



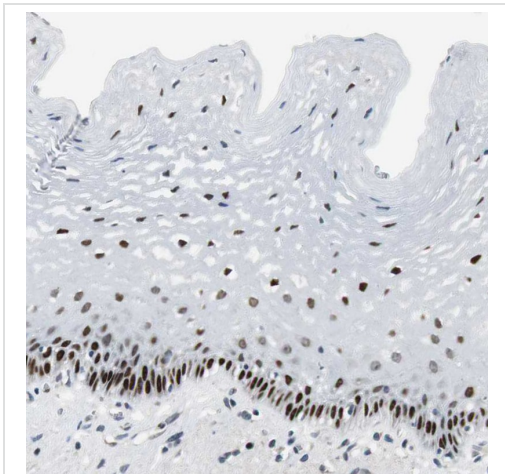
Immunohistochemical staining of human kidney shows moderate nuclear positivity in cells in tubules.

Immunohistochemistry (Formalin/PFA-fixed paraffin-embedded sections) - Anti-Ajuba antibody (ab244285)



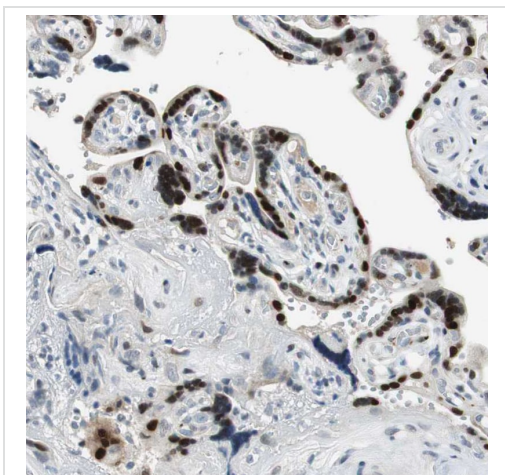
Immunohistochemical staining of human skin shows moderate nuclear positivity in squamous epithelial cells.

Immunohistochemistry (Formalin/PFA-fixed paraffin-embedded sections) - Anti-Ajuba antibody (ab244285)



Immunohistochemical staining of human esophagus shows strong nuclear positivity in squamous epithelial cells.

Immunohistochemistry (Formalin/PFA-fixed paraffin-embedded sections) - Anti-Ajuba antibody (ab244285)



Immunohistochemical staining of human placenta shows strong nuclear positivity in trophoblastic cells.

Immunohistochemistry (Formalin/PFA-fixed paraffin-embedded sections) - Anti-Ajuba antibody (ab244285)

Please note: All products are "FOR RESEARCH USE ONLY. NOT FOR USE IN DIAGNOSTIC PROCEDURES"

Our Abpromise to you: Quality guaranteed and expert technical support

- Replacement or refund for products not performing as stated on the datasheet
- Valid for 12 months from date of delivery
- Response to your inquiry within 24 hours
- We provide support in Chinese, English, French, German, Japanese and Spanish
- Extensive multi-media technical resources to help you
- We investigate all quality concerns to ensure our products perform to the highest standards

If the product does not perform as described on this datasheet, we will offer a refund or replacement. For full details of the Abpromise,

please visit <https://www.abcam.com/abpromise> or contact our technical team.

Terms and conditions

- Guarantee only valid for products bought direct from Abcam or one of our authorized distributors