


Product datasheet

Anti-Alanine Transaminase antibody ab231629

4 Images

Overview

Product name	Anti-Alanine Transaminase antibody
Description	Rabbit polyclonal to Alanine Transaminase
Host species	Rabbit
Tested applications	Suitable for: WB, IHC-P
Species reactivity	Reacts with: Human Predicted to work with: Cow 
Immunogen	Recombinant fragment (His-tag) corresponding to Human Alanine Transaminase aa 350-500. (Expressed in E.coli). Database link: P24298 Run BLAST with Run BLAST with
Positive control	IHC-P: Human liver tissue. WB: Human serum; Recombinant human Alanine Transaminase protein.
General notes	<p>The Life Science industry has been in the grips of a reproducibility crisis for a number of years. Abcam is leading the way in addressing this with our range of recombinant monoclonal antibodies and knockout edited cell lines for gold-standard validation. Please check that this product meets your needs before purchasing.</p> <p>If you have any questions, special requirements or concerns, please send us an inquiry and/or contact our Support team ahead of purchase. Recommended alternatives for this product can be found below, along with publications, customer reviews and Q&As</p>

Properties

Form	Liquid
Storage instructions	Shipped at 4°C. Store at +4°C short term (1-2 weeks). Upon delivery aliquot. Store at -20°C long term. Avoid freeze / thaw cycle.
Storage buffer	pH: 7.40 Preservative: 0.011% Proclin 300 Constituents: 55.77% Glycerol (glycerin, glycerine), 44.219% PBS
Purity	Immunogen affinity purified
Purification notes	ab231629 was purified by antigen-specific affinity chromatography followed by Protein A affinity chromatography.

Clonality	Polyclonal
Isotype	IgG

Applications

The Abpromise guarantee Our **Abpromise guarantee** covers the use of ab231629 in the following tested applications.

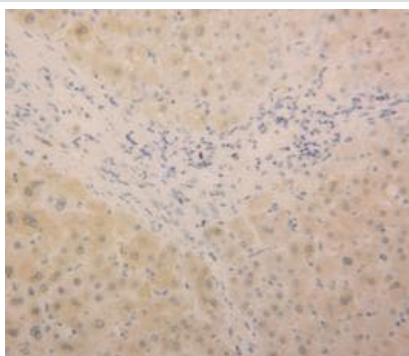
The application notes include recommended starting dilutions; optimal dilutions/concentrations should be determined by the end user.

Application	Abreviews	Notes
WB		Use a concentration of 1 - 5 µg/ml. Predicted molecular weight: 55 kDa.
IHC-P		Use a concentration of 5 - 20 µg/ml.

Target

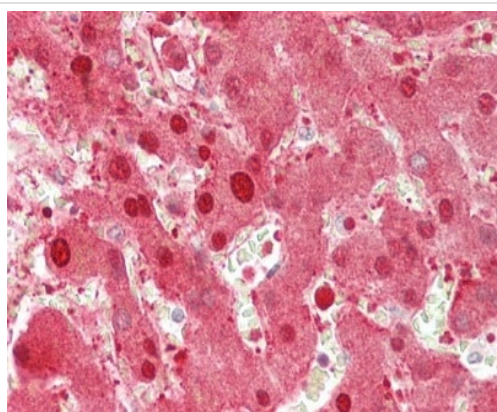
Function	Catalyzes the reversible transamination between alanine and 2-oxoglutarate to form pyruvate and glutamate. Participates in cellular nitrogen metabolism and also in liver gluconeogenesis starting with precursors transported from skeletal muscles.
Tissue specificity	Liver, kidney, heart, and skeletal muscles. Expressed at moderate levels in the adipose tissue.
Pathway	Amino-acid degradation; L-alanine degradation via transaminase pathway; pyruvate from L-alanine: step 1/1.
Sequence similarities	Belongs to the class-I pyridoxal-phosphate-dependent aminotransferase family. Alanine aminotransferase subfamily.
Cellular localization	Cytoplasm.

Images



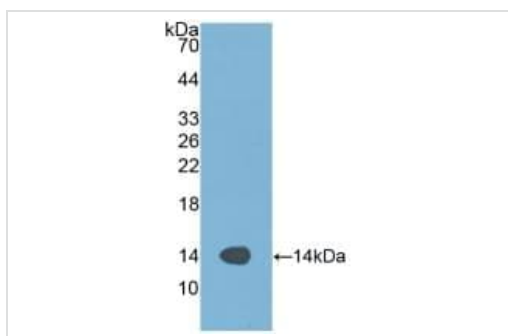
Paraffin-embedded human liver tissue stained for Alanine Transaminase using ab231629 at 20 µg/ml in immunohistochemical analysis. DAB staining.

Immunohistochemistry (Formalin/PFA-fixed paraffin-embedded sections) - Anti-Alanine Transaminase antibody (ab231629)



Immunohistochemistry (Formalin/PFA-fixed paraffin-embedded sections) - Anti-Alanine Transaminase antibody (ab231629)

Paraffin-embedded human liver tissue stained for Alanine Transaminase using ab231629 at 20 µg/ml in immunohistochemical analysis. AEC staining.



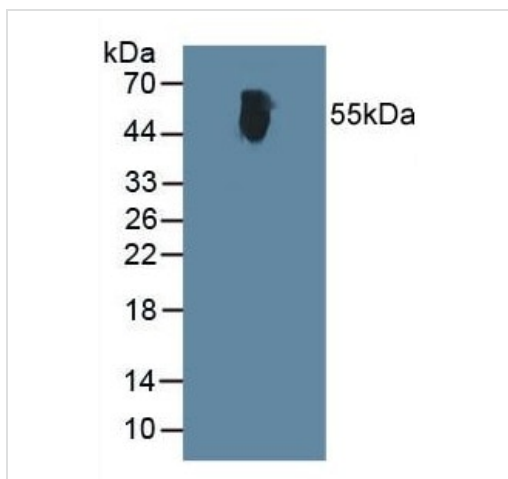
Western blot - Anti-Alanine Transaminase antibody (ab231629)

Anti-Alanine Transaminase antibody (ab231629) at 3 µg/ml + Recombinant human Alanine Transaminase protein

Secondary

HRP-Linked Guinea pig Anti-Rabbit at 1/2000 dilution

Predicted band size: 55 kDa



Western blot - Anti-Alanine Transaminase antibody (ab231629)

Anti-Alanine Transaminase antibody (ab231629) at 3 µg/ml + Human serum

Secondary

HRP-Linked Guinea pig Anti-Rabbit at 1/2000 dilution

Predicted band size: 55 kDa

Please note: All products are "FOR RESEARCH USE ONLY. NOT FOR USE IN DIAGNOSTIC PROCEDURES"

Our Abpromise to you: Quality guaranteed and expert technical support

- Replacement or refund for products not performing as stated on the datasheet
- Valid for 12 months from date of delivery
- Response to your inquiry within 24 hours

- We provide support in Chinese, English, French, German, Japanese and Spanish
- Extensive multi-media technical resources to help you
- We investigate all quality concerns to ensure our products perform to the highest standards

If the product does not perform as described on this datasheet, we will offer a refund or replacement. For full details of the Abpromise, please visit <https://www.abcam.com/abpromise> or contact our technical team.

Terms and conditions

- Guarantee only valid for products bought direct from Abcam or one of our authorized distributors