

# Anti-Albumin antibody [EPR20195-220] - BSA and Azide free (Capture) ab259437

Recombinant RabMAb

2 Images

### Overview

<b>Product name</b>	Anti-Albumin antibody [EPR20195-220] - BSA and Azide free (Capture)
<b>Description</b>	Rabbit monoclonal [EPR20195-220] to Albumin - BSA and Azide free (Capture)
<b>Host species</b>	Rabbit
<b>Tested applications</b>	<b>Suitable for:</b> Sandwich ELISA
<b>Species reactivity</b>	<b>Reacts with:</b> Human, Monkey
<b>Immunogen</b>	Full length native protein (purified). This information is proprietary to Abcam and/or its suppliers.
<b>General notes</b>	<p>ab259437 is a BSA and Azide Free antibody supplied in an unconjugated format and it is suitable for sandwich ELISAs to quantify Human/Monkey Albumin. The recommended pair for sandwich ELISA is:</p> <p>Capture: ab259437, Human/Monkey Albumin Capture Antibody (unconjugated)</p> <p>Detector: <b>ab259438</b>, Human/Monkey Albumin Detector Antibody (unconjugated)</p> <p>The reference range value is 0.31 - 20 ng/ml for human and 1.25 - 80 ng/ml for monkey.</p> <p>Our <b>carrier-free</b> antibodies are typically supplied in a PBS-only formulation, purified and free of BSA, sodium azide and glycerol. The carrier-free buffer and high concentration allow for increased conjugation efficiency.</p> <p>This conjugation-ready format is designed for use with fluorochromes, metal isotopes, oligonucleotides, and enzymes, which makes them ideal for antibody labelling, functional and cell-based assays, flow-based assays (e.g. mass cytometry) and Multiplex Imaging applications.</p> <p>Use our <b>conjugation kits</b> for antibody conjugates that are ready-to-use in as little as 20 minutes with &lt;1 minute hands-on-time and 100% antibody recovery: available for fluorescent dyes, HRP, biotin and gold.</p> <p>The recommended antibody orientation is based on internal optimization for ELISA-based assays. Antibody orientation is assay dependent and needs to be optimized for each assay type. Please note that the range provided for this antibody is only an estimation based on the performance of the product using the recommended antibody pair. Performance of the antibody pair will depend on the specific characteristics of your assay. We guarantee the product works in sandwich ELISA, but we do not guarantee the sensitivity or dynamic range of the antibody in your assay.</p> <p>This product is a recombinant monoclonal antibody, which offers several advantages including:</p>

- High batch-to-batch consistency and reproducibility
- Improved sensitivity and specificity
- Long-term security of supply
- Animal-free production

For more information [see here](#).

Our RabMAb<sup>®</sup> technology is a patented hybridoma-based technology for making rabbit monoclonal antibodies. For details on our patents, please refer to [RabMAb<sup>®</sup> patents](#).

## Properties

<b>Form</b>	Liquid
<b>Storage instructions</b>	Shipped at 4°C. Store at +4°C.
<b>Storage buffer</b>	Constituent: 100% PBS
<b>Carrier free</b>	Yes
<b>Purity</b>	Protein A purified
<b>Clonality</b>	Monoclonal
<b>Clone number</b>	EPR20195-220
<b>Isotype</b>	IgG

## Applications

**The Abpromise guarantee** Our [Abpromise guarantee](#) covers the use of ab259437 in the following tested applications. The application notes include recommended starting dilutions; optimal dilutions/concentrations should be determined by the end user.

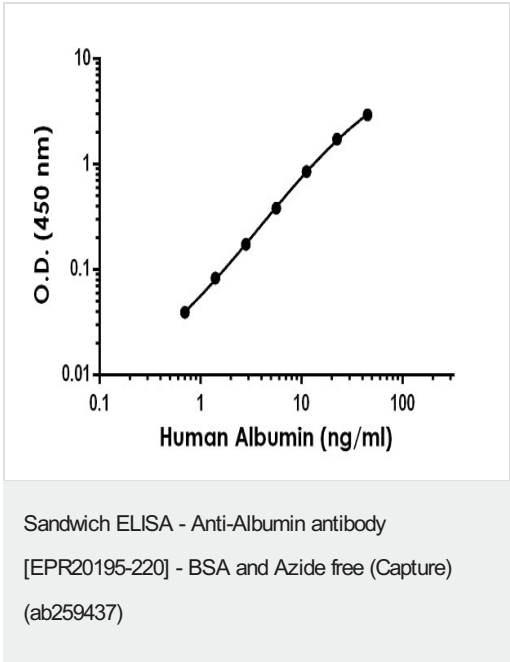
Application	Abreviews	Notes
<b>Sandwich ELISA</b>		Use at an assay dependent concentration. Can be paired for Sandwich ELISA with <a href="#">Rabbit monoclonal [EPR20195-105] to Albumin - BSA and Azide free (Capture) (ab244696)</a> and <a href="#">Rabbit monoclonal [EPR20195-75] to Albumin - BSA and Azide free (Detector) (ab259438)</a> .

## Target

<b>Function</b>	Serum albumin, the main protein of plasma, has a good binding capacity for water, Ca(2+), Na(+), K(+), fatty acids, hormones, bilirubin and drugs. Its main function is the regulation of the colloidal osmotic pressure of blood. Major zinc transporter in plasma, typically binds about 80% of all plasma zinc.
<b>Tissue specificity</b>	Plasma.
<b>Involvement in disease</b>	Defects in ALB are a cause of familial dysalbuminemic hyperthyroxinemia (FDH) [MIM:103600]. FDH is a form of euthyroid hyperthyroxinemia that is due to increased affinity of ALB for T(4). It is the most common cause of inherited euthyroid hyperthyroxinemia in Caucasian population.
<b>Sequence similarities</b>	Belongs to the ALB/AFP/VDB family. Contains 3 albumin domains.

<b>Post-translational modifications</b>	<p>Kenitra variant is partially O-glycosylated at Thr-620. It has two new disulfide bonds Cys-600 to Cys-602 and Cys-601 to Cys-606.</p> <p>Glycated in diabetic patients.</p> <p>Phosphorylation sites are present in the extracellular medium.</p> <p>Acetylated on Lys-223 by acetylsalicylic acid.</p>
<b>Cellular localization</b>	Secreted.
<b>Form</b>	There are 2 isoforms produced by alternative splicing.

Images



Representative standard curve from corresponding SimpleStep ELISA® Kit ([ab179887](#)).

Why choose a recombinant antibody?

Research with confidence

Consistent and reproducible results

Long-term and scalable supply

Recombinant technology

Success from the first experiment

Confirmed specificity

Ethical standards compliant

Animal-free production

Anti-Albumin antibody [EPR20195-220] - BSA and Azide free (Capture) (ab259437)

**Please note:** All products are "FOR RESEARCH USE ONLY. NOT FOR USE IN DIAGNOSTIC PROCEDURES"

## **Our Abpromise to you: Quality guaranteed and expert technical support**

---

- Replacement or refund for products not performing as stated on the datasheet
- Valid for 12 months from date of delivery
- Response to your inquiry within 24 hours
  
- We provide support in Chinese, English, French, German, Japanese and Spanish
- Extensive multi-media technical resources to help you
- We investigate all quality concerns to ensure our products perform to the highest standards

If the product does not perform as described on this datasheet, we will offer a refund or replacement. For full details of the Abpromise, please visit <https://www.abcam.com/abpromise> or contact our technical team.

## **Terms and conditions**

---

- Guarantee only valid for products bought direct from Abcam or one of our authorized distributors