

Anti-Alcohol Dehydrogenase antibody [EPR4440] ab108197

Recombinant RabMAb

★★★★★ [1 Abreviews](#) [1 References](#) [3 Images](#)

Overview

Product name	Anti-Alcohol Dehydrogenase antibody [EPR4440]
Description	Rabbit monoclonal [EPR4440] to Alcohol Dehydrogenase
Host species	Rabbit
Tested applications	Suitable for: WB, IHC-P Unsuitable for: Flow Cyt or ICC/IF
Species reactivity	Reacts with: Mouse, Rat, Human
Immunogen	Synthetic peptide. This information is proprietary to Abcam and/or its suppliers.
Positive control	WB: Human fetal liver, rat liver and mouse liver lysates IHC-P: Human liver tissue
General notes	This product is a recombinant monoclonal antibody, which offers several advantages including: <ul style="list-style-type: none"> - High batch-to-batch consistency and reproducibility - Improved sensitivity and specificity - Long-term security of supply - Animal-free production For more information see here . Our RabMAb [®] technology is a patented hybridoma-based technology for making rabbit monoclonal antibodies. For details on our patents, please refer to RabMAb[®] patents .

Properties

Form	Liquid
Storage instructions	Shipped at 4°C. Upon delivery aliquot and store at -20°C. Avoid repeated freeze / thaw cycles.
Storage buffer	pH: 7.20 Preservative: 0.05% Sodium azide Constituents: 0.1% BSA, 40% Glycerol (glycerin, glycerine), 9.85% Tris glycine, 50% Tissue culture supernatant
Purity	Tissue culture supernatant
Clonality	Monoclonal
Clone number	EPR4440

Isotype

IgG

Applications

The Abpromise guarantee

Our **Abpromise guarantee** covers the use of ab108197 in the following tested applications.

The application notes include recommended starting dilutions; optimal dilutions/concentrations should be determined by the end user.

Application	Abreviews	Notes
WB	★★★★★ (1)	1/1000 - 1/10000. Predicted molecular weight: 40 kDa.
IHC-P		1/100 - 1/250. Perform heat mediated antigen retrieval before commencing with IHC staining protocol. Heat up to 98 °C, below boiling, and then let cool for 10-20 minutes.

Application notes

Is unsuitable for Flow Cyt or ICC/IF.

Target

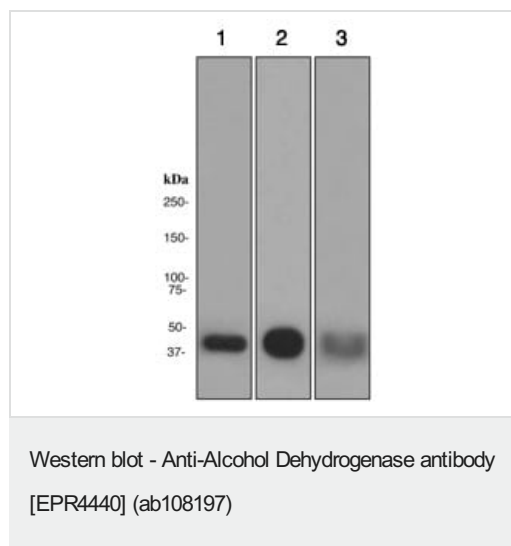
Sequence similarities

Belongs to the zinc-containing alcohol dehydrogenase family.

Cellular localization

Cytoplasm.

Images



All lanes : Anti-Alcohol Dehydrogenase antibody [EPR4440]
(ab108197) at 1/1000 dilution

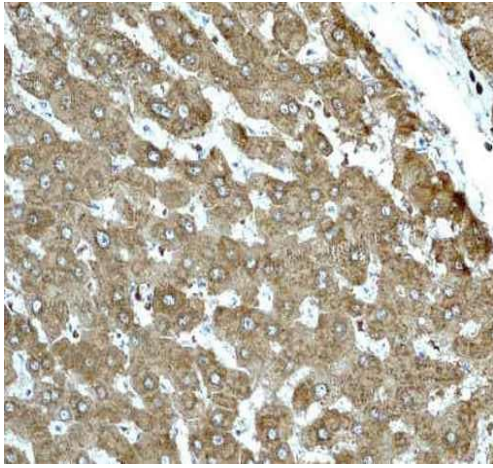
Lane 1 : Human fetal liver lysate

Lane 2 : Mouse liver lysate

Lane 3 : Rat liver lysate

Lysates/proteins at 10 µg per lane.

Predicted band size: 40 kDa

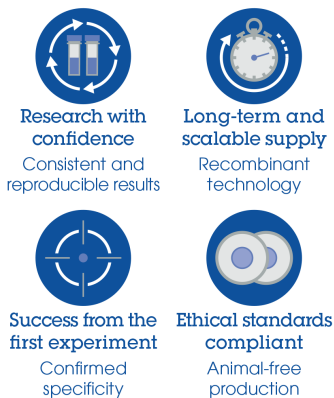


Immunohistochemistry (Formalin/PFA-fixed paraffin-embedded sections) - Anti-Alcohol Dehydrogenase antibody [EPR4440] (ab108197)

Immunohistochemical staining of Alcohol Dehydrogenase in paraffin embedded Human liver tissue, using ab108197 at a 1/100 dilution.

Perform heat mediated antigen retrieval before commencing with IHC staining protocol.

Why choose a recombinant antibody?



Anti-Alcohol Dehydrogenase antibody [EPR4440] (ab108197)

Please note: All products are "FOR RESEARCH USE ONLY. NOT FOR USE IN DIAGNOSTIC PROCEDURES"

Our Abpromise to you: Quality guaranteed and expert technical support

- Replacement or refund for products not performing as stated on the datasheet
- Valid for 12 months from date of delivery

- Response to your inquiry within 24 hours
- We provide support in Chinese, English, French, German, Japanese and Spanish
- Extensive multi-media technical resources to help you
- We investigate all quality concerns to ensure our products perform to the highest standards

If the product does not perform as described on this datasheet, we will offer a refund or replacement. For full details of the Abpromise, please visit <https://www.abcam.com/abpromise> or contact our technical team.

Terms and conditions

- Guarantee only valid for products bought direct from Abcam or one of our authorized distributors