


Product datasheet

Anti-ALDH16A1 antibody [EPR9216] ab137073

Recombinant RabMAb

5 Images

Overview

Product name	Anti-ALDH16A1 antibody [EPR9216]
Description	Rabbit monoclonal [EPR9216] to ALDH16A1
Host species	Rabbit
Tested applications	Suitable for: ICC/IF, IHC-P, WB Unsuitable for: IP
Species reactivity	Reacts with: Human Predicted to work with: Rat 
Immunogen	Synthetic peptide within Human ALDH16A1 aa 1-100. The exact sequence is proprietary.
Positive control	HeLa, HepG2 and 293T cell lysates; Human liver and testis tissues; HeLa cells
General notes	<p>This product is a recombinant monoclonal antibody, which offers several advantages including:</p> <ul style="list-style-type: none"> - High batch-to-batch consistency and reproducibility - Improved sensitivity and specificity - Long-term security of supply - Animal-free production <p>For more information see here.</p> <p>Our RabMAb[®] technology is a patented hybridoma-based technology for making rabbit monoclonal antibodies. For details on our patents, please refer to RabMAb[®] patents.</p> <p>Mouse: We have preliminary internal testing data to indicate this antibody may not react with this species. Please contact us for more information.</p>

Properties

Form	Liquid
Storage instructions	Shipped at 4°C. Store at -20°C.
Storage buffer	pH: 7.2 Preservative: 0.01% Sodium azide Constituents: 9% PBS, 40% Glycerol (glycerin, glycerine), 0.05% BSA, 50% Tissue culture supernatant
Purity	Protein A purified

Clonality	Monoclonal
Clone number	EPR9216
Isotype	IgG

Applications

The Abpromise guarantee Our **Abpromise guarantee** covers the use of ab137073 in the following tested applications. The application notes include recommended starting dilutions; optimal dilutions/concentrations should be determined by the end user.

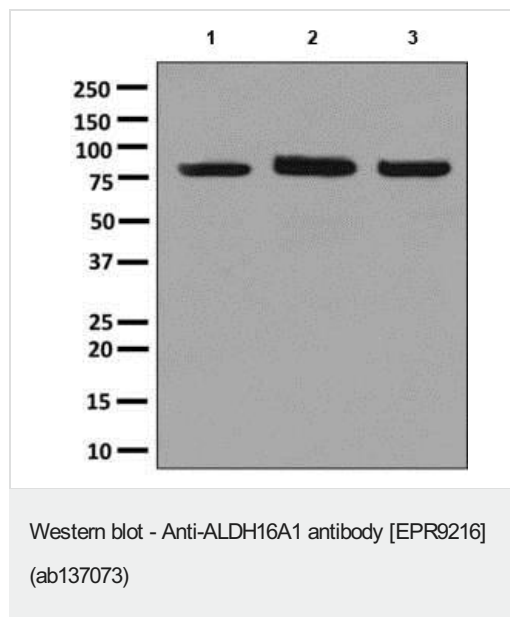
Application	Abreviews	Notes
ICC/IF		1/250 - 1/500.
IHC-P		1/100 - 1/250. Perform heat mediated antigen retrieval with citrate buffer pH 6 before commencing with IHC staining protocol.
WB		1/1000 - 1/10000. Predicted molecular weight: 85 kDa.

Application notes Is unsuitable for IP.

Target

Relevance This gene encodes a member of the aldehyde dehydrogenase superfamily. The family members act on aldehyde substrates and use nicotinamide adenine dinucleotide phosphate (NADP) as a cofactor. This gene is conserved in chimpanzee, dog, cow, mouse, rat, and zebrafish. The protein encoded by this gene interacts with maspardin, a protein that when truncated is responsible for Mast syndrome. Alternatively spliced transcript variants encoding different isoforms have been found for this gene.

Images



All lanes : Anti-ALDH16A1 antibody [EPR9216] (ab137073) at 1/1000 dilution

Lane 1 : HeLa cell lysate

Lane 2 : HepG2 cell lysate

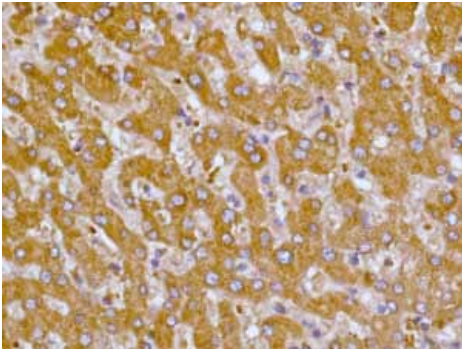
Lane 3 : 293T cell lysate

Lysates/proteins at 10 µg per lane.

Secondary

All lanes : HRP labelled goat anti-rabbit at 1/2000 dilution

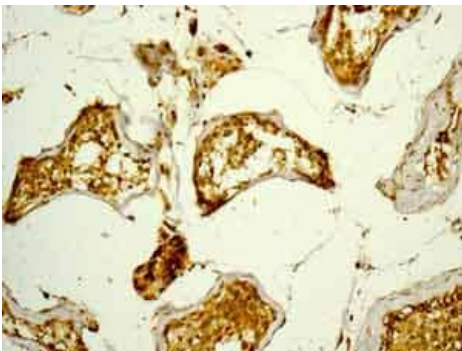
Predicted band size: 85 kDa



Immunohistochemistry (Formalin/PFA-fixed paraffin-embedded sections) - Anti-ALDH16A1 antibody [EPR9216] (ab137073)

Immunohistochemical analysis of paraffin-embedded Human liver tissue labelling ALDH16A1 with ab137073 at 1/100 dilution.

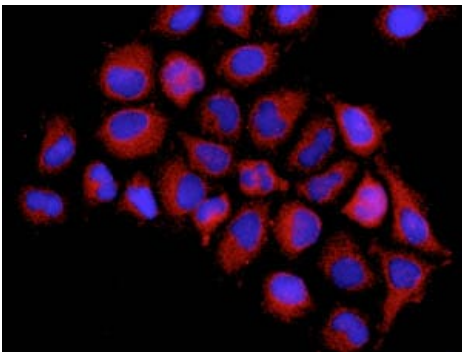
Perform heat mediated antigen retrieval with citrate buffer pH 6 before commencing with IHC staining protocol.



Immunohistochemistry (Formalin/PFA-fixed paraffin-embedded sections) - Anti-ALDH16A1 antibody [EPR9216] (ab137073)

Immunohistochemical analysis of paraffin-embedded Human testis tissue labelling ALDH16A1 with ab137073 at 1/100 dilution.

Perform heat mediated antigen retrieval with citrate buffer pH 6 before commencing with IHC staining protocol.



Immunocytochemistry/ Immunofluorescence - Anti-ALDH16A1 antibody [EPR9216] (ab137073)

Immunofluorescent analysis of HeLa cells labelling ALDH16A1 with ab137073 at 1/250 dilution.

Why choose a recombinant antibody?



Research with confidence
Consistent and reproducible results



Long-term and scalable supply
Recombinant technology



Success from the first experiment
Confirmed specificity



Ethical standards compliant
Animal-free production

Anti-ALDH16A1 antibody [EPR9216] (ab137073)

Please note: All products are "FOR RESEARCH USE ONLY. NOT FOR USE IN DIAGNOSTIC PROCEDURES"

Our Abpromise to you: Quality guaranteed and expert technical support

- Replacement or refund for products not performing as stated on the datasheet
- Valid for 12 months from date of delivery
- Response to your inquiry within 24 hours
- We provide support in Chinese, English, French, German, Japanese and Spanish
- Extensive multi-media technical resources to help you
- We investigate all quality concerns to ensure our products perform to the highest standards

If the product does not perform as described on this datasheet, we will offer a refund or replacement. For full details of the Abpromise, please visit <https://www.abcam.com/abpromise> or contact our technical team.

Terms and conditions

- Guarantee only valid for products bought direct from Abcam or one of our authorized distributors