

Product datasheet

Anti-ALDH1A1 antibody [EP1932Y] ab134188

Recombinant RabMAb

[13 References](#) [3 Images](#)

Overview

Product name	Anti-ALDH1A1 antibody [EP1932Y]
Description	Rabbit monoclonal [EP1932Y] to ALDH1A1
Host species	Rabbit
Tested applications	Suitable for: WB, IHC-P Unsuitable for: Flow Cyt, ICC/IF or IP
Species reactivity	Reacts with: Human
Immunogen	Synthetic peptide within Human ALDH1A1 aa 100-200. The exact sequence is proprietary.
Positive control	HepG2 cell lysate; Human liver tissue
General notes	<p>This product is a recombinant monoclonal antibody, which offers several advantages including:</p> <ul style="list-style-type: none"> - High batch-to-batch consistency and reproducibility - Improved sensitivity and specificity - Long-term security of supply - Animal-free production <p>For more information see here.</p> <p>Our RabMAb[®] technology is a patented hybridoma-based technology for making rabbit monoclonal antibodies. For details on our patents, please refer to RabMAb[®] patents.</p> <p>Mouse, Rat: We have preliminary internal testing data to indicate this antibody may not react with these species. Please contact us for more information.</p>

Properties

Form	Liquid
Storage instructions	Shipped at 4°C. Store at -20°C. Stable for 12 months at -20°C.
Storage buffer	<p>pH: 7.2</p> <p>Preservative: 0.01% Sodium azide</p> <p>Constituents: 59% PBS, 40% Glycerol (glycerin, glycerine), 0.5% BSA</p>
Purity	Protein A purified
Clonality	Monoclonal
Clone number	EP1932Y

Isotype

IgG

Applications

The Abpromise guarantee

Our **Abpromise guarantee** covers the use of ab134188 in the following tested applications.

The application notes include recommended starting dilutions; optimal dilutions/concentrations should be determined by the end user.

Application	Abreviews	Notes
WB		1/1000. Predicted molecular weight: 54 kDa.
IHC-P		1/100 - 1/250. Perform heat mediated antigen retrieval with citrate buffer pH 6 before commencing with IHC staining protocol.

Application notes

Is unsuitable for Flow Cyt, ICC/IF or IP.

Target

Function

Binds free retinal and cellular retinol-binding protein-bound retinal. Can convert/oxidize retinaldehyde to retinoic acid.

Pathway

Cofactor metabolism; retinol metabolism.

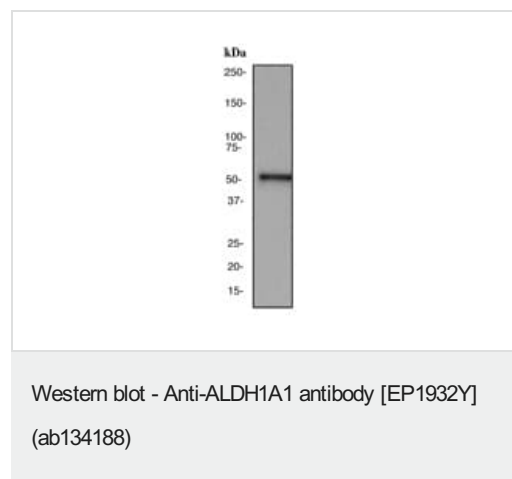
Sequence similarities

Belongs to the aldehyde dehydrogenase family.

Cellular localization

Cytoplasm.

Images

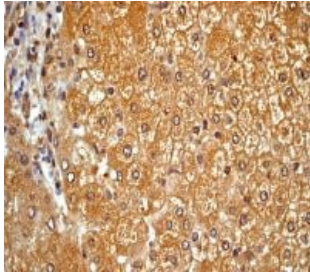


Anti-ALDH1A1 antibody [EP1932Y] (ab134188) at 1/1000 dilution
+ HepG2 cell lysate at 10 µg

Secondary

HRP labelled goat anti-rabbit at 1/2000 dilution

Predicted band size: 54 kDa



Immunohistochemical analysis of paraffin-embedded Human liver tissue labelling ALDH1A1 with ab134188 at 1/100 dilution.

Perform heat mediated antigen retrieval with citrate buffer pH 6 before commencing with IHC staining protocol.

Immunohistochemistry (Formalin/PFA-fixed paraffin-embedded sections) - Anti-ALDH1A1 antibody [EP1932Y] (ab134188)

Why choose a recombinant antibody?



Research with confidence
Consistent and reproducible results



Long-term and scalable supply
Recombinant technology



Success from the first experiment
Confirmed specificity



Ethical standards compliant
Animal-free production

Anti-ALDH1A1 antibody [EP1932Y] (ab134188)

Please note: All products are "FOR RESEARCH USE ONLY. NOT FOR USE IN DIAGNOSTIC PROCEDURES"

Our Abpromise to you: Quality guaranteed and expert technical support

- Replacement or refund for products not performing as stated on the datasheet
- Valid for 12 months from date of delivery
- Response to your inquiry within 24 hours
- We provide support in Chinese, English, French, German, Japanese and Spanish
- Extensive multi-media technical resources to help you
- We investigate all quality concerns to ensure our products perform to the highest standards

If the product does not perform as described on this datasheet, we will offer a refund or replacement. For full details of the Abpromise, please visit <https://www.abcam.com/abpromise> or contact our technical team.

Terms and conditions

- Guarantee only valid for products bought direct from Abcam or one of our authorized distributors