

Product datasheet

Anti-ALDH1A3 antibody [OT4E8] - BSA and Azide free ab273651

[6 Images](#)

Overview

| | |
|----------------------------|---|
| Product name | Anti-ALDH1A3 antibody [OT4E8] - BSA and Azide free |
| Description | Mouse monoclonal [OT4E8] to ALDH1A3 - BSA and Azide free |
| Host species | Mouse |
| Tested applications | Suitable for: Flow Cyt (Intra), WB, IHC-P |
| Species reactivity | Reacts with: Mouse, Human |
| Immunogen | Recombinant fragment corresponding to Human ALDH1A3. Amino acids 1-100 and 413-512. Database link: P47895 |
| Positive control | WB: Transfected HEK-293T, A459 cell lysate; IHC-P: Human prostate and prostate carcinoma tissue; Flow Cyt (Intra): Jurkat whole cells. |
| General notes | <p>The Life Science industry has been in the grips of a reproducibility crisis for a number of years. Abcam is leading the way in addressing this with our range of recombinant monoclonal antibodies and knockout edited cell lines for gold-standard validation. Please check that this product meets your needs before purchasing.</p> <p>If you have any questions, special requirements or concerns, please send us an inquiry and/or contact our Support team ahead of purchase. Recommended alternatives for this product can be found below, along with publications, customer reviews and Q&As</p> |

Properties

| | |
|-----------------------------|---|
| Form | Liquid |
| Storage instructions | Shipped at 4°C. Store at +4°C short term (1-2 weeks). Upon delivery aliquot. Store at -20°C long term. Avoid freeze / thaw cycle. |
| Storage buffer | pH: 7.3 Constituent: PBS |
| Carrier free | Yes |
| Purity | Protein A/G purified |
| Clonality | Monoclonal |
| Clone number | OT4E8 |
| Isotype | IgG1 |

Applications

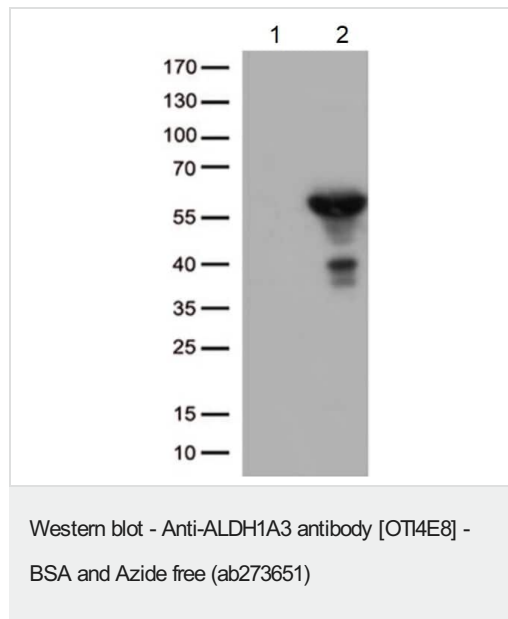
The Abpromise guarantee Our **Abpromise guarantee** covers the use of ab273651 in the following tested applications.

The application notes include recommended starting dilutions; optimal dilutions/concentrations should be determined by the end user.

| Application | Abreviews | Notes |
|------------------|-----------|---|
| Flow Cyt (Intra) | | 1/100. |
| WB | | 1/200 - 1/2000. Predicted molecular weight: 56 kDa. |
| IHC-P | | 1/150. Perform heat mediated antigen retrieval with citrate buffer pH 6 before commencing with IHC staining protocol. |

Target

Images



All lanes : Anti-ALDH1A3 antibody [OT14E8] - BSA and Azide free (ab273651) at 1/500 dilution

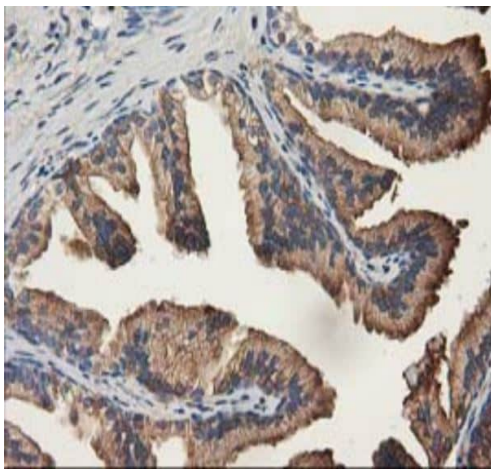
Lane 1 : pCMV6-ENTRY control-transfected HEK-293T (human epithelial cell line from embryonic kidney transformed with large T antigen) whole cell lysate

Lane 2 : pCMV6-ENTRY ALDH1A3-transfected HEK-293T whole cell lysate

Lysates/proteins at 5 µg per lane.

Predicted band size: 56 kDa

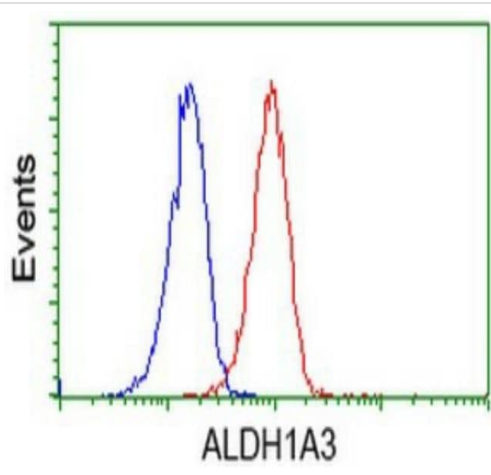
This data was developed using the same antibody clone in a different buffer formulation containing PBS, BSA, glycerol, and sodium azide.



Immunohistochemistry (Formalin/PFA-fixed paraffin-embedded sections) - Anti-ALDH1A3 antibody [OT14E8] - BSA and Azide free (ab273651)

Immunohistochemical analysis of paraffin-embedded human prostate tissue staining ALDH1A3 with a mouse monoclonal ALDH1A3 antibody [OT14E8].

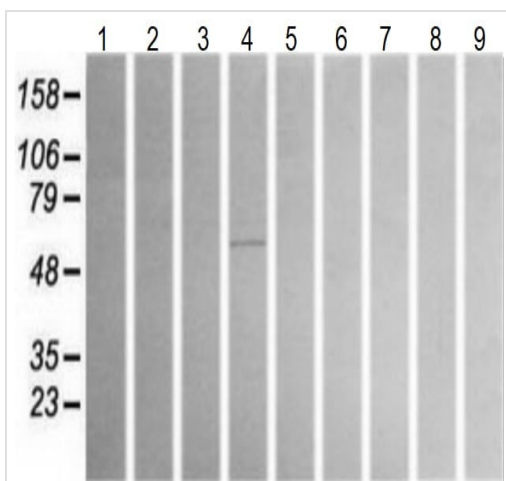
This data was developed using the same antibody clone in a different buffer formulation containing PBS, BSA, glycerol, and sodium azide.



Flow Cytometry (Intracellular) - Anti-ALDH1A3 antibody [OT14E8] - BSA and Azide free (ab273651)

Flow cytometric analysis of Jurkat cells using a mouse monoclonal ALDH1A3 antibody [OT14E8] (Red), compared to a nonspecific negative control antibody (Blue).

This data was developed using the same antibody clone in a different buffer formulation containing PBS, BSA, glycerol, and sodium azide.



Western blot - Anti-ALDH1A3 antibody [OT4E8] - BSA and Azide free (ab273651)

All lanes : Anti-ALDH1A3 antibody [OT4E8] - BSA and Azide free (ab273651) at 1/200 dilution

Lane 1 : HepG2 (human liver hepatocellular carcinoma cell line) whole cell lysate

Lane 2 : HeLa (human epithelial cell line from cervix adenocarcinoma) whole cell lysate

Lane 3 : SV-T2 (Simian Virus 40-transformed BALB/c mouse embryo fibroblasts cell line) whole cell lysate

Lane 4 : A549 (human lung carcinoma cell line) whole cell lysate

Lane 5 : COS-7 (african green monkey kidney fibroblast-like cell line) whole cell lysate

Lane 6 : Jurkat (human T cell leukemia cell line from peripheral blood) whole cell lysate

Lane 7 : MDCK (canine kidney cell line) whole cell lysate

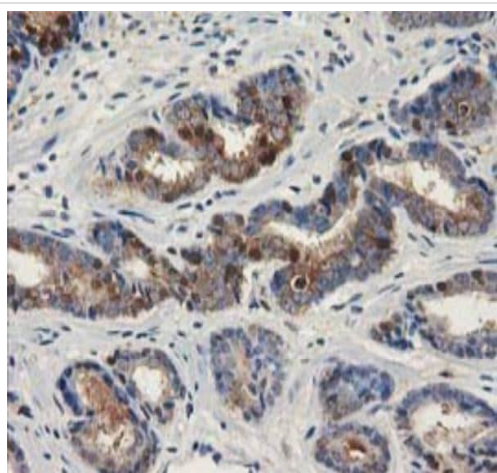
Lane 8 : PC-12 (rat adrenal gland pheochromocytoma cell line) whole cell lysate

Lane 9 : MCF7 (human breast adenocarcinoma cell line) whole cell lysate

Lysates/proteins at 35 µg per lane.

Predicted band size: 56 kDa

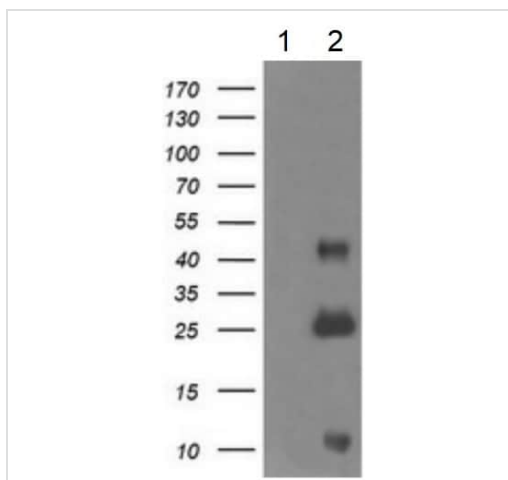
This data was developed using the same antibody clone in a different buffer formulation containing PBS, BSA, glycerol, and sodium azide.



Immunohistochemistry (Formalin/PFA-fixed paraffin-embedded sections) - Anti-ALDH1A3 antibody [OT4E8] - BSA and Azide free (ab273651)

Immunohistochemical analysis of paraffin-embedded human prostate carcinoma tissue staining ALDH1A3 with a mouse monoclonal ALDH1A3 antibody [OT4E8].

This data was developed using the same antibody clone in a different buffer formulation containing PBS, BSA, glycerol, and sodium azide.



Western blot - Anti-ALDH1A3 antibody [OT4E8] - BSA and Azide free (ab273651)

All lanes : Anti-ALDH1A3 antibody [OT4E8] - BSA and Azide free (ab273651) at 1/200 dilution

Lane 1 : Negative control E. coli lysate

Lane 2 : E. coli lysate containing human ALDH1A3 recombinant protein fragment gene

Lysates/proteins at 5 µg per lane.

Predicted band size: 56 kDa

This data was developed using the same antibody clone in a different buffer formulation containing PBS, BSA, glycerol, and sodium azide.

Please note: All products are "FOR RESEARCH USE ONLY. NOT FOR USE IN DIAGNOSTIC PROCEDURES"

Our Abpromise to you: Quality guaranteed and expert technical support

- Replacement or refund for products not performing as stated on the datasheet

- Valid for 12 months from date of delivery
- Response to your inquiry within 24 hours

- We provide support in Chinese, English, French, German, Japanese and Spanish
- Extensive multi-media technical resources to help you
- We investigate all quality concerns to ensure our products perform to the highest standards

If the product does not perform as described on this datasheet, we will offer a refund or replacement. For full details of the Abpromise, please visit <https://www.abcam.com/abpromise> or contact our technical team.

Terms and conditions

- Guarantee only valid for products bought direct from Abcam or one of our authorized distributors