


### Anti-ALDH2 antibody ab103892

1 Image

#### Overview

<b>Product name</b>	Anti-ALDH2 antibody
<b>Description</b>	Goat polyclonal to ALDH2
<b>Host species</b>	Goat
<b>Tested applications</b>	<b>Suitable for:</b> WB
<b>Species reactivity</b>	<b>Reacts with:</b> Mouse <b>Predicted to work with:</b> Cow, Dog, Pig 
<b>Immunogen</b>	Synthetic peptide: DETQFKKILGYIN with a Cysteine residue linker, corresponding to internal sequence amino acids 363-375 of Human ALDH2 (NP_000681).

 [Run BLAST with](#)

 [Run BLAST with](#)

#### General notes

The Life Science industry has been in the grips of a reproducibility crisis for a number of years. Abcam is leading the way in addressing this with our range of recombinant monoclonal antibodies and knockout edited cell lines for gold-standard validation. Please check that this product meets your needs before purchasing.

If you have any questions, special requirements or concerns, please send us an inquiry and/or contact our Support team ahead of purchase. Recommended alternatives for this product can be found below, along with publications, customer reviews and Q&As

#### Properties

<b>Form</b>	Liquid
<b>Storage instructions</b>	Shipped at 4°C. Upon delivery aliquot and store at -20°C. Avoid repeated freeze / thaw cycles.
<b>Storage buffer</b>	pH: 7.30 Preservative: 0.02% Sodium azide Constituents: 0.5% BSA, 99% Tris buffered saline
<b>Purity</b>	Immunogen affinity purified
<b>Purification notes</b>	ab103892 is purified from Goat serum by ammonium sulphate precipitation followed by antigen affinity chromatography using the immunizing peptide.
<b>Clonality</b>	Polyclonal
<b>Isotype</b>	IgG

## Applications

### The Abpromise guarantee

Our **Abpromise guarantee** covers the use of ab103892 in the following tested applications.

The application notes include recommended starting dilutions; optimal dilutions/concentrations should be determined by the end user.

Application	Abreviews	Notes
WB		Use a concentration of 0.03 - 0.1 µg/ml. Detects a band of approximately 50 kDa (predicted molecular weight: 56 kDa). 1 hour primary incubation is recommended for this product.

## Target

### Pathway

Alcohol metabolism; ethanol degradation; acetate from ethanol: step 2/2.

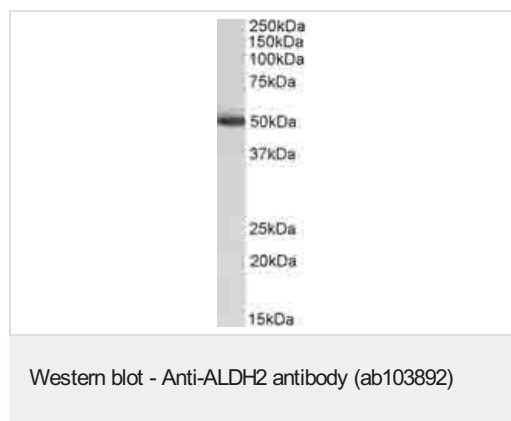
### Sequence similarities

Belongs to the aldehyde dehydrogenase family.

### Cellular localization

Mitochondrion matrix.

## Images



Anti-ALDH2 antibody (ab103892) at 0.03 µg/ml + Mouse Liver lysate (in RIPA buffer) at 35 µg

Developed using the ECL technique.

**Predicted band size:** 56 kDa

**Please note:** All products are "FOR RESEARCH USE ONLY. NOT FOR USE IN DIAGNOSTIC PROCEDURES"

## Our Abpromise to you: Quality guaranteed and expert technical support

- Replacement or refund for products not performing as stated on the datasheet
- Valid for 12 months from date of delivery
- Response to your inquiry within 24 hours
- We provide support in Chinese, English, French, German, Japanese and Spanish
- Extensive multi-media technical resources to help you
- We investigate all quality concerns to ensure our products perform to the highest standards

If the product does not perform as described on this datasheet, we will offer a refund or replacement. For full details of the Abpromise,

please visit <https://www.abcam.com/abpromise> or contact our technical team.

#### **Terms and conditions**

---

- Guarantee only valid for products bought direct from Abcam or one of our authorized distributors