


Product datasheet

Anti-ALDH2 antibody ab227021

★★★★★ [3 Abreviews](#) [1 References](#) [6 Images](#)

Overview

Product name	Anti-ALDH2 antibody
Description	Rabbit polyclonal to ALDH2
Host species	Rabbit
Tested applications	Suitable for: IHC-P, WB, ICC/IF
Species reactivity	Reacts with: Mouse, Human Predicted to work with: Rat, Cow, Pig 
Immunogen	Recombinant fragment within Human ALDH2 (internal sequence). The exact sequence is proprietary. Database link: P05091
Positive control	ICC/IF: A549 cells. IHC-P: Mouse prostate and colon tissues; AGS xenograft tissue. WB: HepG2 whole cell and cytoplasmic extracts; GL261, C8D30, BCL-1 and RAW 264.7 whole cell lysates.
General notes	<p>The Life Science industry has been in the grips of a reproducibility crisis for a number of years. Abcam is leading the way in addressing this with our range of recombinant monoclonal antibodies and knockout edited cell lines for gold-standard validation. Please check that this product meets your needs before purchasing.</p> <p>If you have any questions, special requirements or concerns, please send us an inquiry and/or contact our Support team ahead of purchase. Recommended alternatives for this product can be found below, along with publications, customer reviews and Q&As</p>

Properties

Form	Liquid
Storage instructions	Shipped at 4°C. Store at +4°C short term (1-2 weeks). Upon delivery aliquot. Store at -20°C long term. Avoid freeze / thaw cycle.
Storage buffer	pH: 7.00 Preservative: 0.01% Thimerosal (merthiolate) Constituents: 1.21% Tris, 0.75% Glycine, 10% Glycerol (glycerin, glycerine)
Purity	Immunogen affinity purified
Clonality	Polyclonal
Isotype	IgG

Applications

The Abpromise guarantee

Our **Abpromise guarantee** covers the use of ab227021 in the following tested applications.

The application notes include recommended starting dilutions; optimal dilutions/concentrations should be determined by the end user.

Application	Abreviews	Notes
IHC-P		1/100 - 1/1000.
WB	★★★★★ (1)	1/500 - 1/3000. Predicted molecular weight: 56 kDa.
ICC/IF	★★★★★ (2)	1/100 - 1/1000.

Target

Pathway

Alcohol metabolism; ethanol degradation; acetate from ethanol: step 2/2.

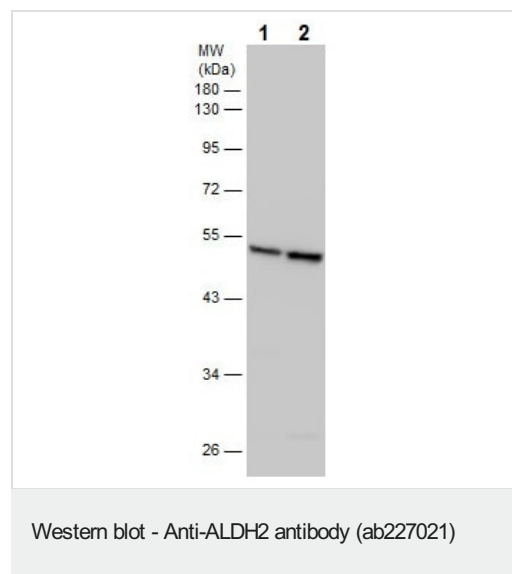
Sequence similarities

Belongs to the aldehyde dehydrogenase family.

Cellular localization

Mitochondrion matrix.

Images



All lanes : Anti-ALDH2 antibody (ab227021) at 1/500 dilution

Lane 1 : HepG2 (human liver hepatocellular carcinoma cell line)
whole cell extract

Lane 2 : HepG2 (human liver hepatocellular carcinoma cell line)
cytoplasmic extract

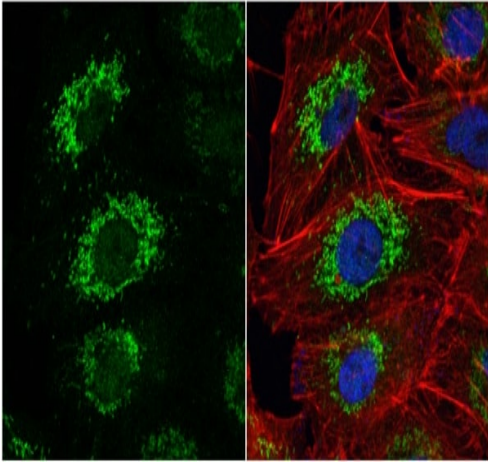
Lysates/proteins at 30 µg per lane.

Secondary

All lanes : HRP-conjugated anti-rabbit IgG

Predicted band size: 56 kDa

10% SDS-PAGE gel.

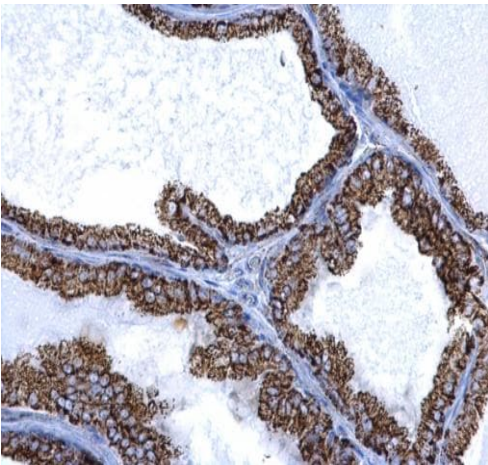


Immunocytochemistry/ Immunofluorescence - Anti-ALDH2 antibody (ab227021)

A549 (human lung carcinoma cell line) cells stained for ALDH2 (green) using ab227021 at 1/500 dilution in ICC/IF. Cells were fixed in 4% paraformaldehyde at RT for 15 minutes.

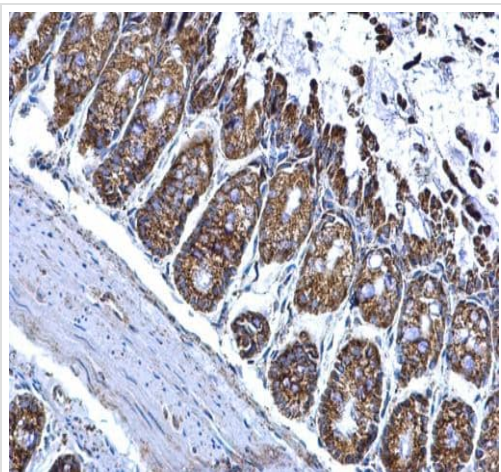
Red: phalloidin, a cytoskeleton marker, stained by phalloidin antibody diluted at 1/200 dilution.

Blue: Hoechst 33342 staining.



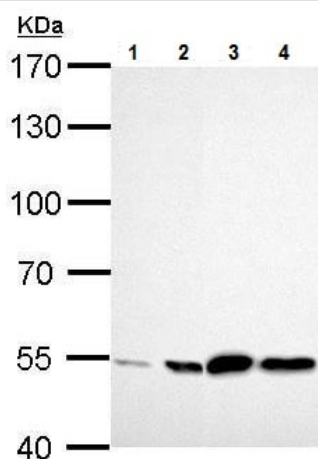
Immunohistochemistry (Formalin/PFA-fixed paraffin-embedded sections) - Anti-ALDH2 antibody (ab227021)

Paraffin-embedded mouse prostate tissue stained for ALDH2 using ab227021 at 1/500 dilution in immunohistochemical analysis.



Immunohistochemistry (Formalin/PFA-fixed paraffin-embedded sections) - Anti-ALDH2 antibody (ab227021)

Paraffin-embedded mouse colon tissue stained for ALDH2 using ab227021 at 1/500 dilution in immunohistochemical analysis.



Western blot - Anti-ALDH2 antibody (ab227021)

All lanes : Anti-ALDH2 antibody (ab227021) at 1/1000 dilution

Lane 1 : GL261 whole cell lysate

Lane 2 : C8D30 whole cell lysate

Lane 3 : BCL-1 whole cell lysate

Lane 4 : RAW 264.7 (mouse macrophage cell line transformed with Abelson murine leukemia virus) whole cell lysate

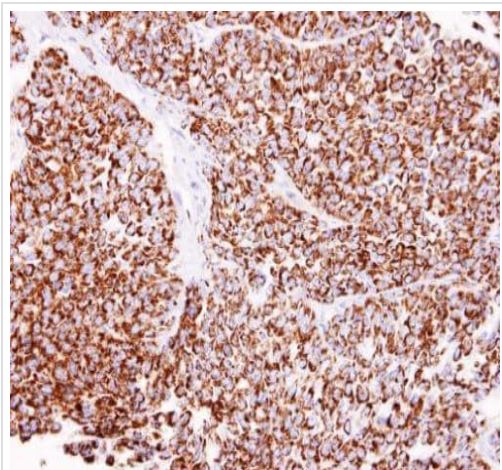
Lysates/proteins at 30 µg per lane.

Secondary

All lanes : HRP-conjugated anti-rabbit IgG

Predicted band size: 56 kDa

7.5% SDS-PAGE gel.



Paraffin-embedded AGS xenograft tissue stained for ALDH2 using ab227021 at 1/100 dilution in immunohistochemical analysis.

Immunohistochemistry (Formalin/PFA-fixed paraffin-embedded sections) - Anti-ALDH2 antibody (ab227021)

Please note: All products are "FOR RESEARCH USE ONLY. NOT FOR USE IN DIAGNOSTIC PROCEDURES"

Our Abpromise to you: Quality guaranteed and expert technical support

- Replacement or refund for products not performing as stated on the datasheet
- Valid for 12 months from date of delivery
- Response to your inquiry within 24 hours
- We provide support in Chinese, English, French, German, Japanese and Spanish
- Extensive multi-media technical resources to help you
- We investigate all quality concerns to ensure our products perform to the highest standards

If the product does not perform as described on this datasheet, we will offer a refund or replacement. For full details of the Abpromise, please visit <https://www.abcam.com/abpromise> or contact our technical team.

Terms and conditions

- Guarantee only valid for products bought direct from Abcam or one of our authorized distributors