


## Product datasheet

# Anti-ALDH6A1 antibody ab228584

4 Images

### Overview

---

<b>Product name</b>	Anti-ALDH6A1 antibody
<b>Description</b>	Rabbit polyclonal to ALDH6A1
<b>Host species</b>	Rabbit
<b>Tested applications</b>	<b>Suitable for:</b> WB, IHC-P
<b>Species reactivity</b>	<b>Reacts with:</b> Mouse, Human <b>Predicted to work with:</b> Rat, Cow 
<b>Immunogen</b>	Recombinant fragment within Human ALDH6A1 (internal sequence). The exact sequence is proprietary. Database link: <a href="#">Q02252</a>
<b>Positive control</b>	WB: Mouse liver tissue whole cell lysate; HepG2 whole cell lysate. IHC-P: Mouse stomach tissue; human liver carcinoma tissue.
<b>General notes</b>	<p>The Life Science industry has been in the grips of a reproducibility crisis for a number of years. Abcam is leading the way in addressing this with our range of recombinant monoclonal antibodies and knockout edited cell lines for gold-standard validation. Please check that this product meets your needs before purchasing.</p> <p>If you have any questions, special requirements or concerns, please send us an inquiry and/or contact our Support team ahead of purchase. Recommended alternatives for this product can be found below, along with publications, customer reviews and Q&amp;As</p>

### Properties

---

<b>Form</b>	Liquid
<b>Storage instructions</b>	Shipped at 4°C. Store at +4°C short term (1-2 weeks). Upon delivery aliquot. Store at -20°C long term. Avoid freeze / thaw cycle.
<b>Storage buffer</b>	pH: 7.00 Preservative: 0.01% Thimerosal (merthiolate) Constituents: 1.21% Tris, 0.75% Glycine, 10% Glycerol (glycerin, glycerine)
<b>Purity</b>	Immunogen affinity purified
<b>Clonality</b>	Polyclonal
<b>Isotype</b>	IgG

## Applications

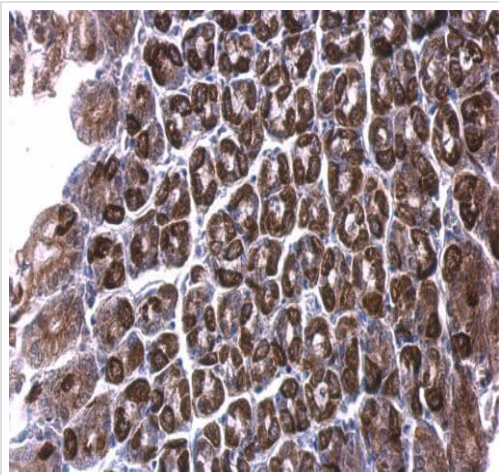
**The Abpromise guarantee** Our **Abpromise guarantee** covers the use of ab228584 in the following tested applications. The application notes include recommended starting dilutions; optimal dilutions/concentrations should be determined by the end user.

Application	Abreviews	Notes
WB		1/500 - 1/3000. Predicted molecular weight: 58 kDa.
IHC-P		1/100 - 1/1000.

## Target

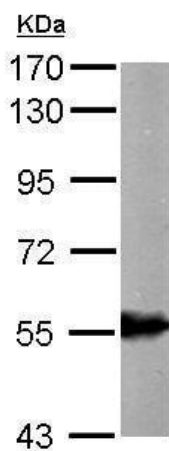
<b>Function</b>	Plays a role in valine and pyrimidine metabolism. Binds fatty acyl-CoA.
<b>Involvement in disease</b>	Defects in ALDH6A1 are the cause of methylmalonate semialdehyde dehydrogenase deficiency (MMSDH deficiency) [MIM:603178]. This is characterized by elevated beta-alanine, 3-hydroxypropionic acid, and both isomers of 3-amino and 3-hydroxyisobutyric acids in urine organic acids.
<b>Sequence similarities</b>	Belongs to the aldehyde dehydrogenase family.
<b>Cellular localization</b>	Mitochondrion.

## Images



Paraffin-embedded mouse stomach tissue stained for ALDH6A1 with ab228584 at 1/500 dilution in immunohistochemical analysis.

Immunohistochemistry (Formalin/PFA-fixed paraffin-embedded sections) - Anti-ALDH6A1 antibody (ab228584)



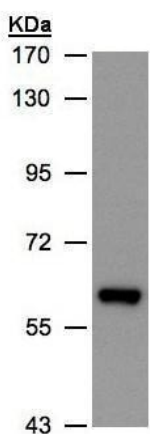
Western blot - Anti-ALDH6A1 antibody (ab228584)

Anti-ALDH6A1 antibody (ab228584) at 1/1000 dilution + Mouse liver tissue whole cell lysate at 50 µg

Developed using the ECL technique.

**Predicted band size:** 58 kDa

7.5% SDS-PAGE



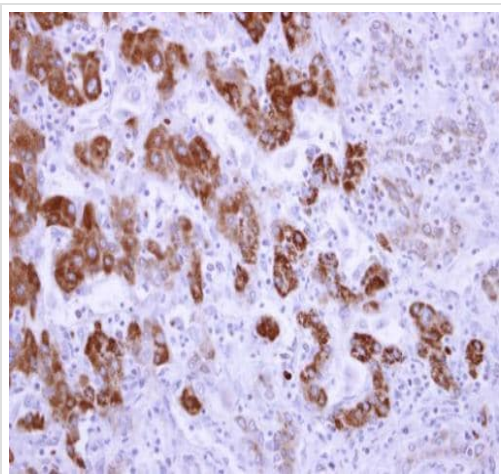
Western blot - Anti-ALDH6A1 antibody (ab228584)

Anti-ALDH6A1 antibody (ab228584) at 1/500 dilution + HepG2 (human liver hepatocellular carcinoma cell line) whole cell lysate at 30 µg

Developed using the ECL technique.

**Predicted band size:** 58 kDa

7.5% SDS-PAGE



Paraffin-embedded human liver carcinoma tissue stained for ALDH6A1 with ab228584 at 1/250 dilution in immunohistochemical analysis.

Immunohistochemistry (Formalin/PFA-fixed paraffin-embedded sections) - Anti-ALDH6A1 antibody (ab228584)

**Please note:** All products are "FOR RESEARCH USE ONLY. NOT FOR USE IN DIAGNOSTIC PROCEDURES"

#### **Our Abpromise to you: Quality guaranteed and expert technical support**

---

- Replacement or refund for products not performing as stated on the datasheet
- Valid for 12 months from date of delivery
- Response to your inquiry within 24 hours
- We provide support in Chinese, English, French, German, Japanese and Spanish
- Extensive multi-media technical resources to help you
- We investigate all quality concerns to ensure our products perform to the highest standards

If the product does not perform as described on this datasheet, we will offer a refund or replacement. For full details of the Abpromise, please visit <https://www.abcam.com/abpromise> or contact our technical team.

#### **Terms and conditions**

---

- Guarantee only valid for products bought direct from Abcam or one of our authorized distributors