


Anti-ALDH7A1 antibody ab154264

[1 References](#) [4 Images](#)

Overview

Product name	Anti-ALDH7A1 antibody
Description	Rabbit polyclonal to ALDH7A1
Host species	Rabbit
Tested applications	Suitable for: WB, IHC-P, ICC/IF
Species reactivity	Reacts with: Mouse, Human Predicted to work with: Cow 
Immunogen	Recombinant fragment, corresponding to a region within amino acids 261-479 of Human ALDH7A1.
Positive control	A431, H1299, HeLa, HepG2 and mouse liver lysates; HeLa cells; MCF7 xenograft tissue.
General notes	<p>The Life Science industry has been in the grips of a reproducibility crisis for a number of years. Abcam is leading the way in addressing this with our range of recombinant monoclonal antibodies and knockout edited cell lines for gold-standard validation. Please check that this product meets your needs before purchasing.</p> <p>If you have any questions, special requirements or concerns, please send us an inquiry and/or contact our Support team ahead of purchase. Recommended alternatives for this product can be found below, along with publications, customer reviews and Q&As</p>

Properties

Form	Liquid
Storage instructions	Shipped at 4°C. Upon delivery aliquot. Store at -20°C or -80°C. Avoid freeze / thaw cycle.
Storage buffer	pH: 7.00 Preservative: 0.01% Thimerosal (merthiolate) Constituents: 1.21% Tris, 0.75% Glycine, 20% Glycerol (glycerin, glycerine)
Purity	Immunogen affinity purified
Clonality	Polyclonal
Isotype	IgG

Applications

The Abpromise guarantee

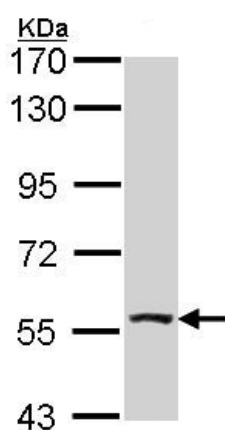
Our **Abpromise guarantee** covers the use of ab154264 in the following tested applications.

The application notes include recommended starting dilutions; optimal dilutions/concentrations should be determined by the end user.

Application	Abreviews	Notes
WB		1/1000 - 1/10000. Predicted molecular weight: 58 kDa.
IHC-P		1/100 - 1/1000. Perform heat mediated antigen retrieval before commencing with IHC staining protocol using 10mM Citrate buffer (pH6.0) or Tris-EDTA buffer (pH8.0).
ICC/IF		1/100 - 1/1000.

Target

Images

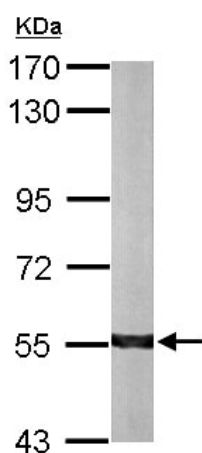


Western blot - Anti-ALDH7A1 antibody (ab154264)

Anti-ALDH7A1 antibody (ab154264) at 1/1000 dilution + HeLa whole cell lysate at 30 µg

Predicted band size: 58 kDa

7.5% SDS PAGE

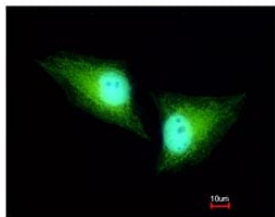
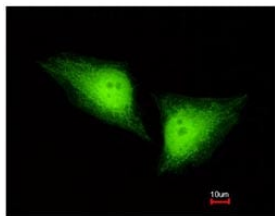


Western blot - Anti-ALDH7A1 antibody (ab154264)

Anti-ALDH7A1 antibody (ab154264) at 1/10000 dilution + Mouse liver whole cell lysate at 50 µg

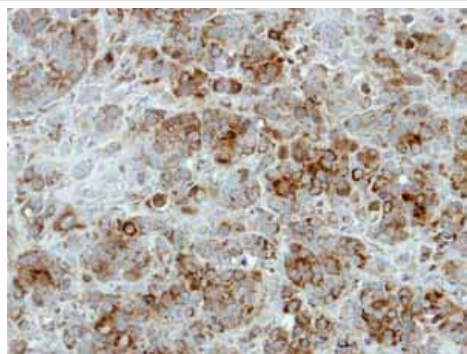
Predicted band size: 58 kDa

7.5% SDS PAGE



Immunofluorescent analysis of paraformaldehyde-fixed HeLa cells labeling ALDH7A1 with ab154264 at 1/200 dilution.

Immunocytochemistry/ Immunofluorescence - Anti-ALDH7A1 antibody (ab154264)



Immunohistochemical analysis of paraffin-embedded MCF7 xenograft labeling ALDH7A1 with ab154264 at 1/500 dilution.

Immunohistochemistry (Formalin/PFA-fixed paraffin-embedded sections) - Anti-ALDH7A1 antibody (ab154264)

Please note: All products are "FOR RESEARCH USE ONLY. NOT FOR USE IN DIAGNOSTIC PROCEDURES"

Our Abpromise to you: Quality guaranteed and expert technical support

- Replacement or refund for products not performing as stated on the datasheet
- Valid for 12 months from date of delivery
- Response to your inquiry within 24 hours
- We provide support in Chinese, English, French, German, Japanese and Spanish
- Extensive multi-media technical resources to help you
- We investigate all quality concerns to ensure our products perform to the highest standards

If the product does not perform as described on this datasheet, we will offer a refund or replacement. For full details of the Abpromise, please visit <https://www.abcam.com/abpromise> or contact our technical team.

Terms and conditions

- Guarantee only valid for products bought direct from Abcam or one of our authorized distributors