


Anti-Aldolase B antibody ab137628

3 Images

Overview

Product name	Anti-Aldolase B antibody
Description	Rabbit polyclonal to Aldolase B
Host species	Rabbit
Tested applications	Suitable for: ICC/IF, WB
Species reactivity	Reacts with: Mouse, Human Predicted to work with: Rat, Rabbit, Cow 
Immunogen	Recombinant fragment corresponding to Human Aldolase B aa 84-288.
Positive control	293T, A431, Jurkat, Raji whole cells lysates; mouse liver lysate; methanol-fixed A431 cells; Breast carcinoma.
General notes	<p>The Life Science industry has been in the grips of a reproducibility crisis for a number of years. Abcam is leading the way in addressing this with our range of recombinant monoclonal antibodies and knockout edited cell lines for gold-standard validation. Please check that this product meets your needs before purchasing.</p> <p>If you have any questions, special requirements or concerns, please send us an inquiry and/or contact our Support team ahead of purchase. Recommended alternatives for this product can be found below, along with publications, customer reviews and Q&As</p>

Properties

Form	Liquid
Storage instructions	Shipped at 4°C. Upon delivery aliquot. Store at -20°C or -80°C. Avoid freeze / thaw cycle.
Storage buffer	pH: 7.00 Preservative: 0.01% Thimerosal (merthiolate) Constituents: 1.21% Tris, 0.75% Glycine, 20% Glycerol (glycerin, glycerine)
Purity	Immunogen affinity purified
Clonality	Polyclonal
Isotype	IgG

Applications

The Abpromise guarantee

Our **Abpromise guarantee** covers the use of ab137628 in the following tested applications.

The application notes include recommended starting dilutions; optimal dilutions/concentrations should be determined by the end user.

Application	Abreviews	Notes
ICC/IF		1/100 - 1/1000.
WB		1/1000 - 1/10000. Predicted molecular weight: 39 kDa.

Target

Pathway

Carbohydrate degradation; glycolysis; D-glyceraldehyde 3-phosphate and glycerone phosphate from D-glucose: step 4/4.

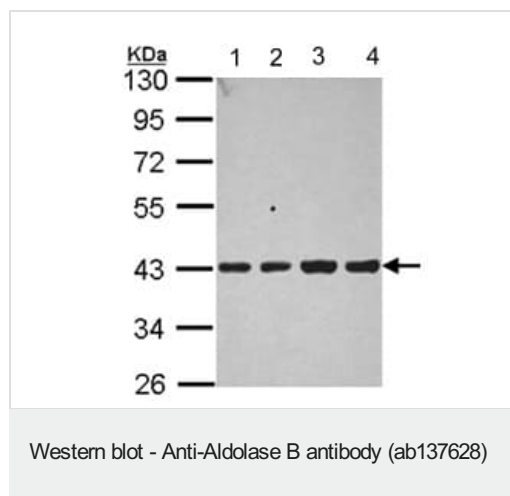
Involvement in disease

Defects in ALDOB are the cause of hereditary fructose intolerance (HFI) [MIM:229600]. HFI is an autosomal recessive disease that results in an inability to metabolize fructose and related sugars. Complete exclusion of fructose results in dramatic recovery; however, if not treated properly, HFI subjects suffer episodes of hypoglycemia, general ill condition, and risk of death the remainder of life.

Sequence similarities

Belongs to the class I fructose-bisphosphate aldolase family.

Images



All lanes : Anti-Aldolase B antibody (ab137628) at 1/1000 dilution

Lane 1 : 293T whole cells lysate

Lane 2 : A431 whole cells lysate

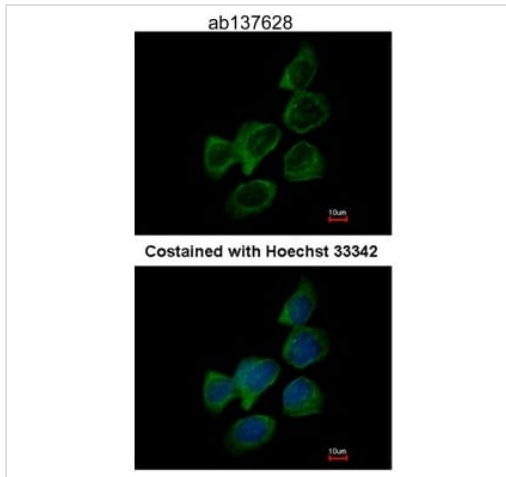
Lane 3 : Jurkat whole cells lysate

Lane 4 : Raji whole cells lysate

Lysates/proteins at 30 µg per lane.

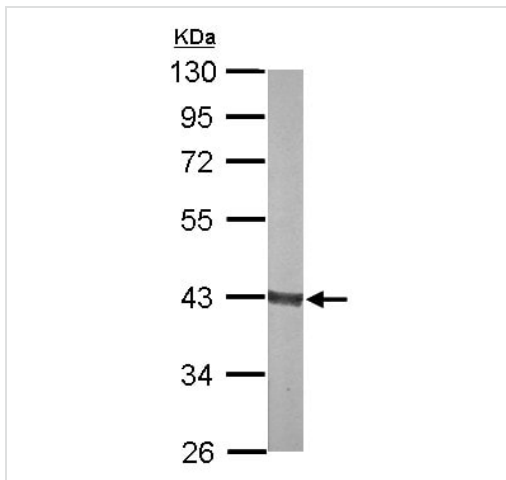
Predicted band size: 39 kDa

10% SDS Page



Immunofluorescence analysis of methanol-fixed A431 cells laebelling Aldolase B using ab137628 antibody at 1/200 dilution. Lower panel represents cells costained with Hoechst 33342.

Immunocytochemistry/ Immunofluorescence - Anti-Aldolase B antibody (ab137628)



Anti-Aldolase B antibody (ab137628) at 1/1000 dilution + mouse liver whole cells lysate at 30 µg

Predicted band size: 39 kDa

Western blot - Anti-Aldolase B antibody (ab137628)

Please note: All products are "FOR RESEARCH USE ONLY. NOT FOR USE IN DIAGNOSTIC PROCEDURES"

Our Abpromise to you: Quality guaranteed and expert technical support

- Replacement or refund for products not performing as stated on the datasheet
- Valid for 12 months from date of delivery
- Response to your inquiry within 24 hours

- We provide support in Chinese, English, French, German, Japanese and Spanish
- Extensive multi-media technical resources to help you
- We investigate all quality concerns to ensure our products perform to the highest standards

If the product does not perform as described on this datasheet, we will offer a refund or replacement. For full details of the Abpromise, please visit <https://www.abcam.com/abpromise> or contact our technical team.

Terms and conditions

- Guarantee only valid for products bought direct from Abcam or one of our authorized distributors