


Product datasheet

Anti-Aldose reductase antibody ab175394

[8 References](#) [2 Images](#)

Overview

Product name	Anti-Aldose reductase antibody
Description	Rabbit polyclonal to Aldose reductase
Host species	Rabbit
Tested applications	Suitable for: IHC-P, WB
Species reactivity	Reacts with: Human Predicted to work with: Rabbit, Pig 
Immunogen	Recombinant full length protein corresponding to Human Aldose reductase aa 1-316. Sequence: MASRLLLNNGAKMPILGLGTWKSPPGQVTEAVKVAIDVGY RHIDCAHVYQ NENEVGVAIQEKLREQVVKREELFVSKLWCTYHEKGLVK GACQKTLSDL KLDYLDLYLIHWPTGFKPGKEFFPLDESGNVVPSDTNILD WAAMEELVD EGLVKAIGISNFNHLQVEMILNKPGLKYKPAVNQIECHPYLT QEKLQYC QSKGIVVTAYSPLGSPDRPWAKPEDPSLLEDPRIKAIAAK HNKTTAQVLI RFPMQRNLVVIPKSVTPERIAENFKVDFELSSQDMTLLS YNRNWRVCA LLSCTSHKDYPFHEEF Database link: P15121 Run BLAST with Run BLAST with
Positive control	Human liver extract.
General notes	<p>The Life Science industry has been in the grips of a reproducibility crisis for a number of years. Abcam is leading the way in addressing this with our range of recombinant monoclonal antibodies and knockout edited cell lines for gold-standard validation. Please check that this product meets your needs before purchasing.</p> <p>If you have any questions, special requirements or concerns, please send us an inquiry and/or contact our Support team ahead of purchase. Recommended alternatives for this product can be found below, along with publications, customer reviews and Q&As</p>

Properties

Form	Liquid
Storage instructions	Shipped at 4°C. Store at +4°C short term (1-2 weeks). Upon delivery aliquot. Store at -20°C long term. Avoid freeze / thaw cycle.
Storage buffer	pH: 7.30 Preservative: 0.02% Sodium azide Constituents: 49% PBS, 50% Glycerol
Purity	Protein A purified
Clonality	Polyclonal
Isotype	IgG

Applications

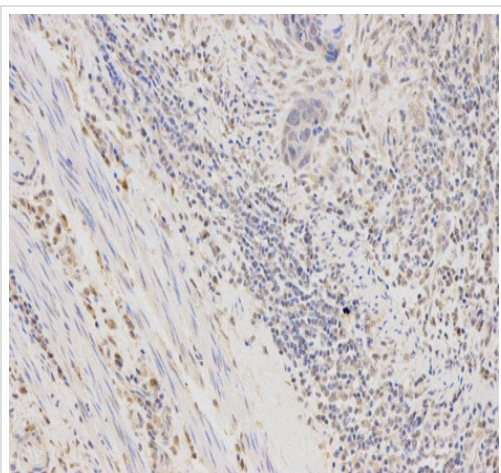
The Abpromise guarantee Our **Abpromise guarantee** covers the use of ab175394 in the following tested applications. The application notes include recommended starting dilutions; optimal dilutions/concentrations should be determined by the end user.

Application	Abreviews	Notes
IHC-P		1/50 - 1/200. ab171870 - Rabbit polyclonal IgG, is suitable for use as an isotype control with this antibody.
WB		1/500 - 1/2000. Predicted molecular weight: 35 kDa.

Target

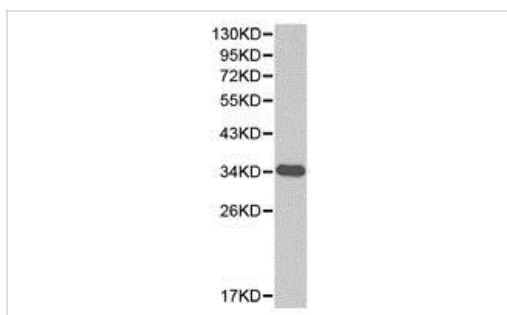
Function	Catalyzes the NADPH-dependent reduction of a wide variety of carbonyl-containing compounds to their corresponding alcohols with a broad range of catalytic efficiencies.
Tissue specificity	Highly expressed in embryonic epithelial cells (EUE) in response to osmotic stress.
Sequence similarities	Belongs to the aldo/keto reductase family.
Cellular localization	Cytoplasm.

Images



Immunohistochemistry (Formalin/PFA-fixed paraffin-embedded sections) analysis of human esophageal cancer tissue labelling Aldose reductase with ab175394 at 1/200. Magnification: 200x.

Immunohistochemistry (Formalin/PFA-fixed paraffin-embedded sections) - Anti-Aldose reductase antibody (ab175394)



Anti-Aldose reductase antibody (ab175394) at 1/500 dilution + Human liver extract

Predicted band size: 35 kDa

Western blot - Anti-Aldose reductase antibody (ab175394)

Please note: All products are "FOR RESEARCH USE ONLY. NOT FOR USE IN DIAGNOSTIC PROCEDURES"

Our Abpromise to you: Quality guaranteed and expert technical support

- Replacement or refund for products not performing as stated on the datasheet
- Valid for 12 months from date of delivery
- Response to your inquiry within 24 hours

- We provide support in Chinese, English, French, German, Japanese and Spanish
- Extensive multi-media technical resources to help you
- We investigate all quality concerns to ensure our products perform to the highest standards

If the product does not perform as described on this datasheet, we will offer a refund or replacement. For full details of the Abpromise, please visit <https://www.abcam.com/abpromise> or contact our technical team.

Terms and conditions

- Guarantee only valid for products bought direct from Abcam or one of our authorized distributors