


## Product datasheet

# Alexa Fluor® 488 Anti-CD16 antibody [3G8] ab187585

1 Image

### Overview

---

<b>Product name</b>	Alexa Fluor® 488 Anti-CD16 antibody [3G8]
<b>Description</b>	Alexa Fluor® 488 Mouse monoclonal [3G8] to CD16
<b>Host species</b>	Mouse
<b>Conjugation</b>	Alexa Fluor® 488. Ex: 495nm, Em: 519nm
<b>Tested applications</b>	<b>Suitable for:</b> Flow Cyt
<b>Species reactivity</b>	<b>Reacts with:</b> Human <b>Predicted to work with:</b> Non human primates 
<b>Immunogen</b>	Tissue, cells or virus corresponding to Human CD16. Human neutrophils. Database link: <a href="#">P08637</a>
<b>Positive control</b>	Human blood cells.
<b>General notes</b>	<p>The Life Science industry has been in the grips of a reproducibility crisis for a number of years. Abcam is leading the way in addressing this with our range of recombinant monoclonal antibodies and knockout edited cell lines for gold-standard validation. Please check that this product meets your needs before purchasing.</p> <p>If you have any questions, special requirements or concerns, please send us an inquiry and/or contact our Support team ahead of purchase. Recommended alternatives for this product can be found below, along with publications, customer reviews and Q&amp;As</p>

### Properties

---

<b>Form</b>	Liquid
<b>Storage instructions</b>	Shipped at 4°C. Store at +4°C. Do Not Freeze. Store In the Dark.
<b>Storage buffer</b>	pH: 7.4 Preservative: 0.097% Sodium azide Constituents: 99% PBS, 0.2% BSA
<b>Purity</b>	Size exclusion
<b>Clonality</b>	Monoclonal
<b>Clone number</b>	3G8
<b>Isotype</b>	IgG1

## Applications

### The Abpromise guarantee

Our **Abpromise guarantee** covers the use of ab187585 in the following tested applications.

The application notes include recommended starting dilutions; optimal dilutions/concentrations should be determined by the end user.

Application	Abreviews	Notes
Flow Cyt		Use 4µl for 10 <sup>6</sup> cells. <b>ab171463</b> - Mouse monoclonal IgG1, is suitable for use as an isotype control with this antibody.

## Target

### Function

Receptor for the Fc region of IgG. Binds complexed or aggregated IgG and also monomeric IgG. Mediates antibody-dependent cellular cytotoxicity (ADCC) and other antibody-dependent responses, such as phagocytosis.

### Tissue specificity

Expressed on natural killer cells, macrophages, subpopulation of T-cells, immature thymocytes and placental trophoblasts.

### Sequence similarities

Contains 2 Ig-like C2-type (immunoglobulin-like) domains.

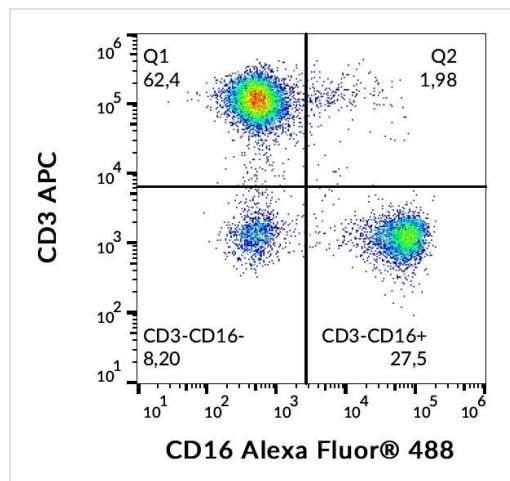
### Post-translational modifications

Glycosylated. Contains high mannose- and complex-type oligosaccharides. The soluble form is produced by a proteolytic cleavage.

### Cellular localization

Cell membrane. Secreted. Exists also as a soluble receptor.

## Images



Surface staining of CD16 in human peripheral blood with ab187585 at 6 µg/ml

Flow Cytometry - Alexa Fluor® 488 Anti-CD16 antibody [3G8] (ab187585)

**Please note:** All products are "FOR RESEARCH USE ONLY. NOT FOR USE IN DIAGNOSTIC PROCEDURES"

## **Our Abpromise to you: Quality guaranteed and expert technical support**

---

- Replacement or refund for products not performing as stated on the datasheet
- Valid for 12 months from date of delivery
- Response to your inquiry within 24 hours
  
- We provide support in Chinese, English, French, German, Japanese and Spanish
- Extensive multi-media technical resources to help you
- We investigate all quality concerns to ensure our products perform to the highest standards

If the product does not perform as described on this datasheet, we will offer a refund or replacement. For full details of the Abpromise, please visit <https://www.abcam.com/abpromise> or contact our technical team.

## **Terms and conditions**

---

- Guarantee only valid for products bought direct from Abcam or one of our authorized distributors