

Product datasheet

Alexa Fluor® 488 Anti-ICAM3 antibody [MEM-171] ab239270

[1 Image](#)

Overview

Product name	Alexa Fluor® 488 Anti-ICAM3 antibody [MEM-171]
Description	Alexa Fluor® 488 Mouse monoclonal [MEM-171] to ICAM3
Host species	Mouse
Conjugation	Alexa Fluor® 488. Ex: 495nm, Em: 519nm
Tested applications	Suitable for: Flow Cyt
Species reactivity	Reacts with: Human
Immunogen	Tissue, cells or virus corresponding to Human ICAM3. Human granulocytes.
Positive control	Flow: Human peripheral blood.
General notes	<p>The Life Science industry has been in the grips of a reproducibility crisis for a number of years. Abcam is leading the way in addressing this with our range of recombinant monoclonal antibodies and knockout edited cell lines for gold-standard validation. Please check that this product meets your needs before purchasing.</p> <p>If you have any questions, special requirements or concerns, please send us an inquiry and/or contact our Support team ahead of purchase. Recommended alternatives for this product can be found below, along with publications, customer reviews and Q&As</p>

Properties

Form	Liquid
Storage instructions	Shipped at 4°C. Store at +4°C. Avoid freeze / thaw cycle. Store In the Dark.
Storage buffer	<p>pH: 7.4</p> <p>Preservative: 0.0975% Sodium azide</p> <p>Constituent: PBS</p>
Purity	Size exclusion
Purification notes	The purified antibody is conjugated with Alexa Fluor® 488 under optimum conditions. The conjugate is purified by size-exclusion chromatography and adjusted for direct use. No reconstitution is necessary.
Clonality	Monoclonal
Clone number	MEM-171

Isotype

IgG1

Applications

The Abpromise guarantee

Our **Abpromise guarantee** covers the use of ab239270 in the following tested applications.

The application notes include recommended starting dilutions; optimal dilutions/concentrations should be determined by the end user.

Application	Abreviews	Notes
Flow Cyt		Use 4µl for 10 ⁶ cells. (or 100 µl of whole blood)

Target

Function

ICAM proteins are ligands for the leukocyte adhesion protein LFA-1 (integrin alpha-L/beta-2). ICAM3 is also a ligand for integrin alpha-D/beta-2.

Sequence similarities

Belongs to the immunoglobulin superfamily. ICAM family.
Contains 5 Ig-like C2-type (immunoglobulin-like) domains.

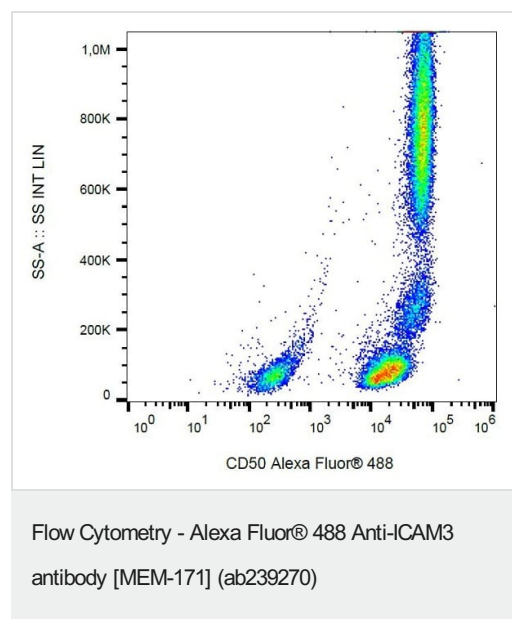
Post-translational modifications

Upon stimulation by a physiologic stimuli becomes rapidly and transiently phosphorylated on serine residues.
N-glycosylated; glycans consist of a mixture of tri- and tetra-antennary complex-type chains and high-mannose chains.

Cellular localization

Membrane.

Images



Flow cytometric analysis of human peripheral blood cells labeling ICAM3 using ab239270. Surface staining. Gated on leukocytes and platelets.

Please note: All products are "FOR RESEARCH USE ONLY. NOT FOR USE IN DIAGNOSTIC PROCEDURES"

Our Abpromise to you: Quality guaranteed and expert technical support

- Replacement or refund for products not performing as stated on the datasheet
- Valid for 12 months from date of delivery
- Response to your inquiry within 24 hours

- We provide support in Chinese, English, French, German, Japanese and Spanish
- Extensive multi-media technical resources to help you
- We investigate all quality concerns to ensure our products perform to the highest standards

If the product does not perform as described on this datasheet, we will offer a refund or replacement. For full details of the Abpromise, please visit <https://www.abcam.com/abpromise> or contact our technical team.

Terms and conditions

- Guarantee only valid for products bought direct from Abcam or one of our authorized distributors