

## Product datasheet

# Alexa Fluor® 488 Anti-SLAMF6 antibody [EPR22170] ab245910

Recombinant RabMAb

2 Images

### Overview

<b>Product name</b>	Alexa Fluor® 488 Anti-SLAMF6 antibody [EPR22170]
<b>Description</b>	Alexa Fluor® 488 Rabbit monoclonal [EPR22170] to SLAMF6
<b>Host species</b>	Rabbit
<b>Conjugation</b>	Alexa Fluor® 488. Ex: 495nm, Em: 519nm
<b>Tested applications</b>	<b>Suitable for:</b> Flow Cyt
<b>Species reactivity</b>	<b>Reacts with:</b> Human
<b>Immunogen</b>	Recombinant fragment within Human SLAMF6 aa 1-250. The exact immunogen sequence used to generate this antibody is proprietary information. If additional detail on the immunogen is needed to determine the suitability of the antibody for your needs, please <b>contact</b> our Scientific Support team to discuss your requirements. Database link: <a href="#">Q96DU3</a>

 [Run BLAST with](#)

 [Run BLAST with](#)

**Positive control** Flow cyt: Jurkat cells

**General notes** This product is a recombinant monoclonal antibody, which offers several advantages including:

- High batch-to-batch consistency and reproducibility
- Improved sensitivity and specificity
- Long-term security of supply
- Animal-free production

For more information [see here](#).

Our RabMAb® technology is a patented hybridoma-based technology for making rabbit monoclonal antibodies. For details on our patents, please refer to [RabMAb® patents](#).

Alexa Fluor® is a registered trademark of Molecular Probes, Inc, a Thermo Fisher Scientific Company. The Alexa Fluor® dye included in this product is provided under an intellectual property license from Life Technologies Corporation. As this product contains the Alexa Fluor® dye, the purchase of this product conveys to the buyer the non-transferable right to use the purchased product and components of the product only in research conducted by the buyer (whether the buyer is an academic or for-profit entity). As this product contains the Alexa Fluor® dye the sale of this product is expressly conditioned on the buyer not using the product or its components, or any materials made using the product or its components, in any activity to generate revenue, which may include, but is not limited to use of the product or its components: in manufacturing; (ii) to

provide a service, information, or data in return for payment (iii) for therapeutic, diagnostic or prophylactic purposes; or (iv) for resale, regardless of whether they are sold for use in research. For information on purchasing a license to this product for purposes other than research, contact Life Technologies Corporation, 5781 Van Allen Way, Carlsbad, CA 92008 USA or [outlicensing@thermofisher.com](mailto:outlicensing@thermofisher.com).

## Properties

<b>Form</b>	Liquid
<b>Storage instructions</b>	Shipped at 4°C. Store at +4°C short term (1-2 weeks). Upon delivery aliquot. Store at -20°C long term. Avoid freeze / thaw cycle. Stable for 12 months at -20°C. Store In the Dark.
<b>Storage buffer</b>	pH: 7.40 Preservative: 0.02% Sodium azide Constituents: 30% Glycerol (glycerin, glycerine), 1% BSA, PBS
<b>Purity</b>	Protein A purified
<b>Clonality</b>	Monoclonal
<b>Clone number</b>	EPR22170
<b>Isotype</b>	IgG

## Applications

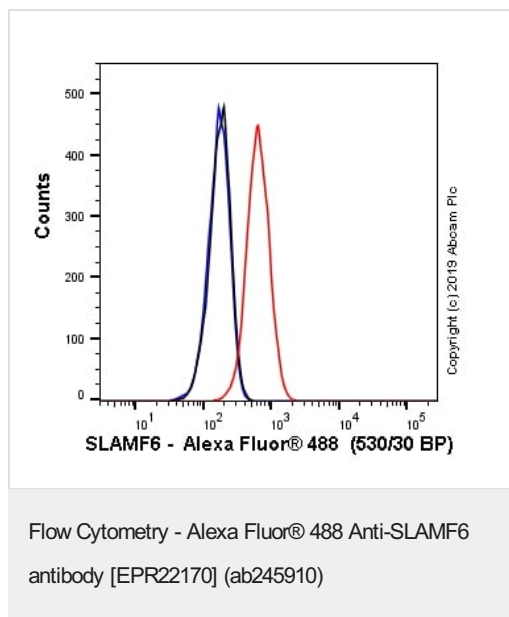
**The Abpromise guarantee** Our **Abpromise guarantee** covers the use of ab245910 in the following tested applications. The application notes include recommended starting dilutions; optimal dilutions/concentrations should be determined by the end user.

Application	Abreviews	Notes
Flow Cyt		1/50.

## Target

<b>Function</b>	Triggers cytolytic activity only in natural killer cells (NK) expressing high surface densities of natural cytotoxicity receptors.
<b>Tissue specificity</b>	Expressed by all (resting and activated) natural killer cells (NK), T- and B-lymphocytes.
<b>Sequence similarities</b>	Contains 1 Ig-like (immunoglobulin-like) domain.
<b>Cellular localization</b>	Cell membrane.

## Images



Overlay histogram showing Jurkat cells stained with ab245910 (red line). The cells were then incubated in 1x PBS / 10% normal Goat serum to block non-specific protein-protein interactions followed by the antibody (ab245910, 1/50 dilution) for 30 min at 4°C. Isotype control antibody (black line) was Rabbit IgG (monoclonal) Alexa Fluor® 488 (**ab199091**) used at the same concentration and conditions as the primary antibody. Unlabelled sample (blue line) was also used as a control. Acquisition of >5,000 events were collected using a 50 mW Blue laser (488nm) and 530/30 bandpass filter.

Why choose a recombinant antibody?

 <p><b>Research with confidence</b> Consistent and reproducible results</p>	 <p><b>Long-term and scalable supply</b> Recombinant technology</p>
 <p><b>Success from the first experiment</b> Confirmed specificity</p>	 <p><b>Ethical standards compliant</b> Animal-free production</p>

Alexa Fluor® 488 Anti-SLAMF6 antibody [EPR22170] (ab245910)

**Please note:** All products are "FOR RESEARCH USE ONLY. NOT FOR USE IN DIAGNOSTIC PROCEDURES"

### Our Abpromise to you: Quality guaranteed and expert technical support

- Replacement or refund for products not performing as stated on the datasheet
- Valid for 12 months from date of delivery
- Response to your inquiry within 24 hours
- We provide support in Chinese, English, French, German, Japanese and Spanish
- Extensive multi-media technical resources to help you

- We investigate all quality concerns to ensure our products perform to the highest standards

If the product does not perform as described on this datasheet, we will offer a refund or replacement. For full details of the Abpromise, please visit <https://www.abcam.com/abpromise> or contact our technical team.

### **Terms and conditions**

---

- Guarantee only valid for products bought direct from Abcam or one of our authorized distributors