

Alexa Fluor® 568 Anti-LAMP1 antibody [EPR21026] ab302802

Recombinant RabMAb

4 Images

Overview

Product name	Alexa Fluor® 568 Anti-LAMP1 antibody [EPR21026]
Description	Alexa Fluor® 568 Rabbit monoclonal [EPR21026] to LAMP1
Host species	Rabbit
Conjugation	Alexa Fluor® 568. Ex: 578nm, Em: 603nm
Tested applications	Suitable for: ICC/IF, Flow Cyt (Intra)
Species reactivity	Reacts with: Mouse
Immunogen	Recombinant fragment. This information is proprietary to Abcam and/or its suppliers.
Positive control	ICC/IF: NIH/3T3 (mouse embryonic fibroblast), Neuro-2a (mouse neuroblastoma neuroblast). Flow cyt. intr.: Neuro-2a (mouse neuroblastoma neuroblast).
General notes	<p>This product is a recombinant monoclonal antibody, which offers several advantages including:</p> <ul style="list-style-type: none"> - High batch-to-batch consistency and reproducibility - Improved sensitivity and specificity - Long-term security of supply - Animal-free production <p>For more information see here.</p> <p>Our RabMAb® technology is a patented hybridoma-based technology for making rabbit monoclonal antibodies. For details on our patents, please refer to RabMAb® patents.</p> <p>Alexa Fluor® is a registered trademark of Molecular Probes, Inc, a Thermo Fisher Scientific Company. The Alexa Fluor® dye included in this product is provided under an intellectual property license from Life Technologies Corporation. As this product contains the Alexa Fluor® dye, the purchase of this product conveys to the buyer the non-transferable right to use the purchased product and components of the product only in research conducted by the buyer (whether the buyer is an academic or for-profit entity). As this product contains the Alexa Fluor® dye the sale of this product is expressly conditioned on the buyer not using the product or its components, or any materials made using the product or its components, in any activity to generate revenue, which may include, but is not limited to use of the product or its components: in manufacturing; (ii) to provide a service, information, or data in return for payment (iii) for therapeutic, diagnostic or prophylactic purposes; or (iv) for resale, regardless of whether they are sold for use in research. For information on purchasing a license to this product for purposes other than research, contact Life Technologies Corporation, 5781 Van Allen Way, Carlsbad, CA 92008 USA or</p>

Properties

Form	Liquid
Storage instructions	Shipped at 4°C. Store at +4°C short term (1-2 weeks). Upon delivery aliquot. Store at -20°C long term. Avoid freeze / thaw cycle. Store In the Dark.
Storage buffer	pH: 7.40 Preservative: 0.02% Sodium azide Constituents: 68% PBS, 30% Glycerol (glycerin, glycerine), 1% BSA
Purity	Protein A purified
Clonality	Monoclonal
Clone number	EPR21026
Isotype	IgG

Applications

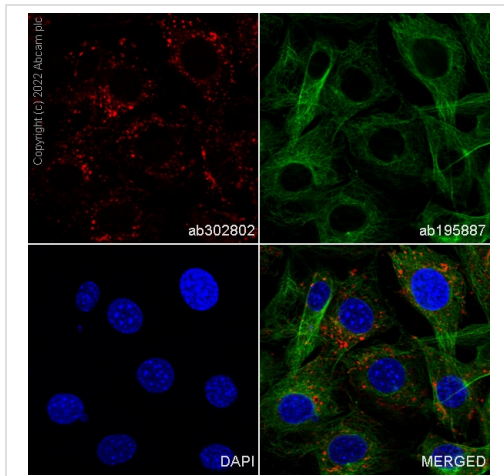
The Abpromise guarantee Our **Abpromise guarantee** covers the use of ab302802 in the following tested applications. The application notes include recommended starting dilutions; optimal dilutions/concentrations should be determined by the end user.

Application	Abreviews	Notes
ICC/IF		1/50.
Flow Cyt (Intra)		1/500.

Target

Function	Presents carbohydrate ligands to selectins. Also implicated in tumor cell metastasis.
Sequence similarities	Belongs to the LAMP family.
Post-translational modifications	O- and N-glycosylated; some of the 18 N-linked glycans are polylactosaminoglycans.
Cellular localization	Cell membrane. Endosome membrane. Lysosome membrane. This protein shuttles between lysosomes, endosomes, and the plasma membrane.

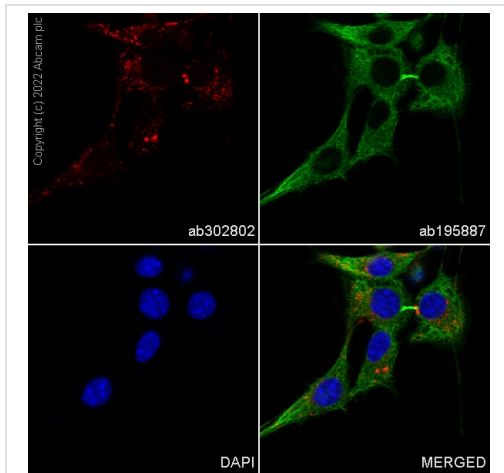
Images



Immunocytochemistry/ Immunofluorescence - Alexa Fluor® 568 Anti-LAMP1 antibody [EPR21026] (ab302802)

Immunofluorescent analysis of 4% paraformaldehyde-fixed, 0.1% TritonX-100 permeabilized NIH/3T3 (mouse embryonic fibroblast) cells labeling LAMP1 with ab302802 at 1/50 dilution (10.0 µg/ml). Confocal image showing cytoplasmic staining in NIH/3T3 cells. The Nuclear counterstain was DAPI (Blue).

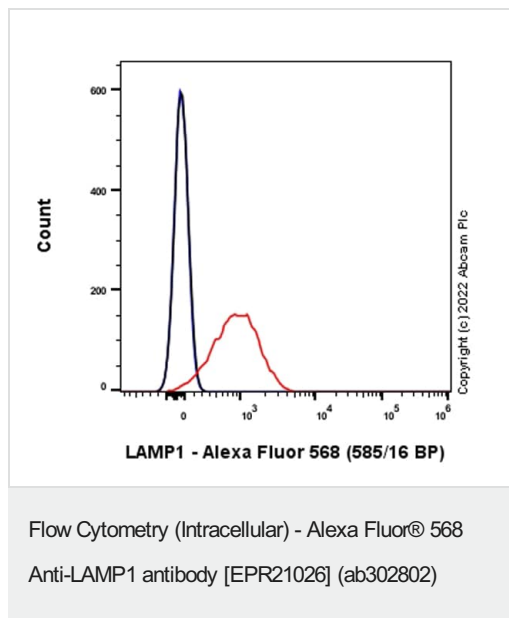
ab195887 Anti-alpha Tubulin mouse monoclonal antibody - Microtubule Marker (Alexa Fluor® 488) was used to counterstain tubulin at 1/200 dilution (2.5 µg/ml (Green).



Immunocytochemistry/ Immunofluorescence - Alexa Fluor® 568 Anti-LAMP1 antibody [EPR21026] (ab302802)

Immunofluorescent analysis of 4% paraformaldehyde-fixed, 0.1% TritonX-100 permeabilized Neuro-2a (mouse neuroblastoma neuroblast) cells labeling LAMP1 with ab302802 at 1/50 dilution (10.0 µg/ml). Confocal image showing cytoplasmic staining in Neuro-2a cells. The Nuclear counterstain was DAPI (Blue).

ab195887 Anti-alpha Tubulin mouse monoclonal antibody - Microtubule Marker (Alexa Fluor® 488) was used to counterstain tubulin at 1/200 dilution (2.5 µg/ml (Green).



Intracellular flow cytometric analysis of 4% paraformaldehyde fixed, 90% methanol permeabilized Neuro-2a (mouse neuroblastoma neuroblast) cells labeling LAMP1 with ab302802 at 1/500 dilution (0.1 µg) (Red), compared with a Rabbit IgG monoclonal [EPR25A] - Isotype Control (Alexa Fluor® 568) (**ab209613**) (Black) and an unlabeled control (cells without incubation with primary antibody and secondary antibody) (Blue).

Why choose a recombinant antibody?

 <p>Research with confidence Consistent and reproducible results</p>	 <p>Long-term and scalable supply Recombinant technology</p>
 <p>Success from the first experiment Confirmed specificity</p>	 <p>Ethical standards compliant Animal-free production</p>

Alexa Fluor® 568 Anti-LAMP1 antibody [EPR21026] (ab302802)

Please note: All products are "FOR RESEARCH USE ONLY. NOT FOR USE IN DIAGNOSTIC PROCEDURES"

Our Abpromise to you: Quality guaranteed and expert technical support

- Replacement or refund for products not performing as stated on the datasheet
- Valid for 12 months from date of delivery
- Response to your inquiry within 24 hours

- We provide support in Chinese, English, French, German, Japanese and Spanish
- Extensive multi-media technical resources to help you
- We investigate all quality concerns to ensure our products perform to the highest standards

If the product does not perform as described on this datasheet, we will offer a refund or replacement. For full details of the Abpromise, please visit <https://www.abcam.com/abpromise> or contact our technical team.

Terms and conditions

- Guarantee only valid for products bought direct from Abcam or one of our authorized distributors