

Alexa Fluor® 594 Anti-CCR2 antibody [EPR20844] ab286808

Recombinant RabMAb

2 Images

Overview

Product name	Alexa Fluor® 594 Anti-CCR2 antibody [EPR20844]
Description	Alexa Fluor® 594 Rabbit monoclonal [EPR20844] to CCR2
Host species	Rabbit
Conjugation	Alexa Fluor® 594. Ex: 590nm, Em: 617nm
Tested applications	Suitable for: Flow Cyt
Species reactivity	Reacts with: Mouse
Immunogen	Synthetic peptide. This information is proprietary to Abcam and/or its suppliers.
Positive control	Flow Cyt: C57 BL/6 mouse splenocytes.
General notes	<p>This antibody clone is manufactured by Abcam. If you require a custom buffer formulation or conjugation for your experiments, please contact orders@abcam.com.</p> <p>This product is a recombinant monoclonal antibody, which offers several advantages including:</p> <ul style="list-style-type: none"> - High batch-to-batch consistency and reproducibility - Improved sensitivity and specificity - Long-term security of supply - Animal-free production <p>For more information see here.</p> <p>Our RabMAb® technology is a patented hybridoma-based technology for making rabbit monoclonal antibodies. For details on our patents, please refer to RabMAb® patents.</p> <p>Alexa Fluor® is a registered trademark of Molecular Probes, Inc, a Thermo Fisher Scientific Company. The Alexa Fluor® dye included in this product is provided under an intellectual property license from Life Technologies Corporation. As this product contains the Alexa Fluor® dye, the purchase of this product conveys to the buyer the non-transferable right to use the purchased product and components of the product only in research conducted by the buyer (whether the buyer is an academic or for-profit entity). As this product contains the Alexa Fluor® dye the sale of this product is expressly conditioned on the buyer not using the product or its components, or any materials made using the product or its components, in any activity to generate revenue, which may include, but is not limited to use of the product or its components: (i) in manufacturing; (ii) to provide a service, information, or data in return for payment (iii) for therapeutic, diagnostic or prophylactic purposes; or (iv) for resale, regardless of whether they are sold for use in research. For information on purchasing a license to this product for purposes other than research, contact</p>

Properties

Form	Liquid
Storage instructions	Shipped at 4°C. Store at +4°C short term (1-2 weeks). Upon delivery aliquot. Store at -20°C long term. Avoid freeze / thaw cycle. Store In the Dark.
Storage buffer	pH: 7.4 Preservative: 0.02% Sodium azide Constituents: 30% Glycerol (glycerin, glycerine), 1% BSA, 68% PBS
Purity	Protein A purified
Clonality	Monoclonal
Clone number	EPR20844

Applications

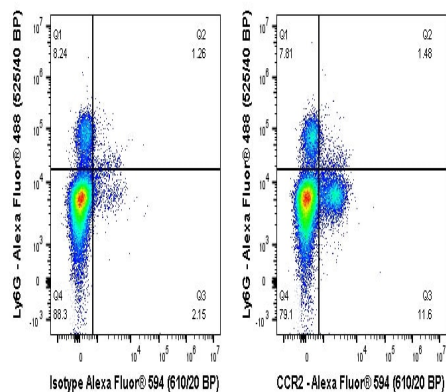
The Abpromise guarantee Our **Abpromise guarantee** covers the use of ab286808 in the following tested applications. The application notes include recommended starting dilutions; optimal dilutions/concentrations should be determined by the end user.

Application	Abreviews	Notes
Flow Cyt		Use at an assay dependent concentration.

Target

Function	Receptor for the MCP-1, MCP-3 and MCP-4 chemokines. Transduces a signal by increasing the intracellular calcium ions level. Alternative coreceptor with CD4 for HIV-1 infection.
Sequence similarities	Belongs to the G-protein coupled receptor 1 family.
Post-translational modifications	N-glycosylated.
Cellular localization	Cell membrane.

Images



Flow Cytometry - Alexa Fluor® 594 Anti-CCR2 antibody [EPR20844] (ab286808)

Flow cytometric analysis of C57 BL/6 mouse splenocytes with ab286808 (right) or Rabbit IgG (monoclonal) Alexa Fluor® 594 (**ab208568**) isotype (left). Cells were incubated for 30 min on ice in 1x PBS containing 10 µ/ml anti CD16/CD32 and 10 % normal goat serum to block FC receptors and non-specific protein-protein interaction followed by the antibody (ab286808) or Rabbit IgG (monoclonal) Alexa Fluor® 594 (**ab208568**) isotype (1×10^6 in 100µl at 0.04 µg/ml (1/12500)) for 30 min on ice. The cells were simultaneously stained with Ly6G.

Acquisition of >30000 events were collected using a 50 mW Yellow/Green laser (561nm) and 610/20 bandpass filter. Events were gated on live single cells.

Why choose a recombinant antibody?



Research with confidence
Consistent and reproducible results



Long-term and scalable supply
Recombinant technology



Success from the first experiment
Confirmed specificity



Ethical standards compliant
Animal-free production

Alexa Fluor® 594 Anti-CCR2 antibody [EPR20844] (ab286808)

Please note: All products are "FOR RESEARCH USE ONLY. NOT FOR USE IN DIAGNOSTIC PROCEDURES"

Our Abpromise to you: Quality guaranteed and expert technical support

- Replacement or refund for products not performing as stated on the datasheet
- Valid for 12 months from date of delivery

- Response to your inquiry within 24 hours
- We provide support in Chinese, English, French, German, Japanese and Spanish
- Extensive multi-media technical resources to help you
- We investigate all quality concerns to ensure our products perform to the highest standards

If the product does not perform as described on this datasheet, we will offer a refund or replacement. For full details of the Abpromise, please visit <https://www.abcam.com/abpromise> or contact our technical team.

Terms and conditions

- Guarantee only valid for products bought direct from Abcam or one of our authorized distributors