

## Product datasheet

# Alexa Fluor® 594 Mouse IgG1, kappa monoclonal [15-6E10A7] - Isotype Control ab178000

[1 Image](#)

### Overview

<b>Product name</b>	Alexa Fluor® 594 Mouse IgG1, kappa monoclonal [15-6E10A7] - Isotype Control
<b>Conjugation</b>	Alexa Fluor® 594. Ex: 590nm, Em: 617nm
<b>Tested applications</b>	<b>Suitable for:</b> ICC/IF
<b>General notes</b>	<p>Isotype controls are used to confirm that the primary antibody binding is specific and not a result of non-specific Fc receptor binding or other protein interactions. The isotype control antibody should match the primary antibody's host species, isotype, and possible conjugation. The Control performed appropriately in all materials and platforms that were tested.</p> <p>Product was previously marketed under the MitoSciences sub-brand.</p> <p>The Life Science industry has been in the grips of a reproducibility crisis for a number of years. Abcam is leading the way in addressing this with our range of recombinant monoclonal antibodies and knockout edited cell lines for gold-standard validation. Please check that this product meets your needs before purchasing.</p> <p>If you have any questions, special requirements or concerns, please send us an inquiry and/or contact our Support team ahead of purchase. Recommended alternatives for this product can be found below, along with publications, customer reviews and Q&amp;As</p>

### Properties

<b>Form</b>	Liquid
<b>Storage instructions</b>	Shipped at 4°C. Store at +4°C. Avoid freeze / thaw cycle. Stable for 12 months at -20°C. Store In the Dark.
<b>Storage buffer</b>	Preservative: 0.02% Sodium azide Constituents: 68% PBS, 30% Glycerol (glycerin, glycerine), 1% BSA
<b>Purity</b>	Ammonium Sulphate Precipitation
<b>Clonality</b>	Monoclonal
<b>Clone number</b>	15-6E10A7
<b>Isotype</b>	IgG1
<b>Light chain type</b>	kappa
<b>Cellular localization</b>	Secreted

## Applications

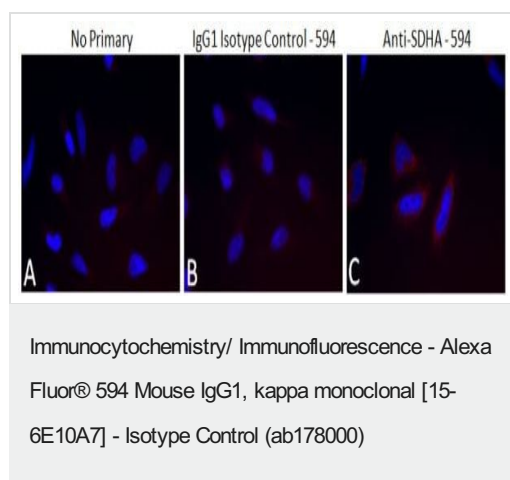
### The Abpromise guarantee

Our **Abpromise guarantee** covers the use of ab178000 in the following tested applications.

The application notes include recommended starting dilutions; optimal dilutions/concentrations should be determined by the end user.

Application	Abreviews	Notes
ICC/IF		Use at an assay dependent concentration.

## Images



Immunocytochemistry data for ab178000. All panels show HeLa cells stained with DAPI as well as; a no primary control (A), ab178000 at 0.1 µg/mL (B), an Alexa 594 anti-SDHA conjugated antibody (**ab170172**) at 0.1 µg/mL (C).

Cells were PFA fixed and stored in 0.02% azide/PBS in 4°C, then blocked with 10% GS for 2 hours, primary was diluted in 10% GS and incubated for 2 hours, cells were washed 3x with 1% GS and DAPI was added for 10 minutes in 1% GS.

**Please note:** All products are "FOR RESEARCH USE ONLY. NOT FOR USE IN DIAGNOSTIC PROCEDURES"

## Our Abpromise to you: Quality guaranteed and expert technical support

- Replacement or refund for products not performing as stated on the datasheet
- Valid for 12 months from date of delivery
- Response to your inquiry within 24 hours
- We provide support in Chinese, English, French, German, Japanese and Spanish
- Extensive multi-media technical resources to help you
- We investigate all quality concerns to ensure our products perform to the highest standards

If the product does not perform as described on this datasheet, we will offer a refund or replacement. For full details of the Abpromise, please visit <https://www.abcam.com/abpromise> or contact our technical team.

## Terms and conditions

- Guarantee only valid for products bought direct from Abcam or one of our authorized distributors