


Product datasheet

Alexa Fluor® 647 Anti-CLCA1 antibody [EPR12254-88] ab203735

Recombinant RabMAb

3 Images

Overview

Product name	Alexa Fluor® 647 Anti-CLCA1 antibody [EPR12254-88]
Description	Alexa Fluor® 647 Rabbit monoclonal [EPR12254-88] to CLCA1
Host species	Rabbit
Conjugation	Alexa Fluor® 647. Ex: 652nm, Em: 668nm
Tested applications	Suitable for: ICC/IF
Species reactivity	Reacts with: Human Predicted to work with: Mouse, Rat 
Immunogen	Recombinant fragment within Human CLCA1. The exact sequence is proprietary. Database link: A8K7I4
Positive control	ICC/IF: SW480 cells; Caco-2 cells.
General notes	<p>This product is a recombinant monoclonal antibody, which offers several advantages including:</p> <ul style="list-style-type: none">- High batch-to-batch consistency and reproducibility- Improved sensitivity and specificity- Long-term security of supply- Animal-free production <p>For more information see here.</p> <p>Our RabMAb® technology is a patented hybridoma-based technology for making rabbit monoclonal antibodies. For details on our patents, please refer to RabMAb® patents.</p> <p>Alexa Fluor® is a registered trademark of Molecular Probes, Inc, a Thermo Fisher Scientific Company. The Alexa Fluor® dye included in this product is provided under an intellectual property license from Life Technologies Corporation. As this product contains the Alexa Fluor® dye, the purchase of this product conveys to the buyer the non-transferable right to use the purchased product and components of the product only in research conducted by the buyer (whether the buyer is an academic or for-profit entity). As this product contains the Alexa Fluor® dye the sale of this product is expressly conditioned on the buyer not using the product or its components, or any materials made using the product or its components, in any activity to generate revenue, which may include, but is not limited to use of the product or its components: (i) in manufacturing; (ii) to provide a service, information, or data in return for payment (iii) for therapeutic, diagnostic or prophylactic purposes; or (iv) for resale, regardless of whether they are sold for use in research. For information on purchasing a license to this product for purposes other than research, contact</p>

Properties

Form	Liquid
Storage instructions	Shipped at 4°C. Store at +4°C short term (1-2 weeks). Upon delivery aliquot. Store at -20°C. Avoid freeze / thaw cycle. Store In the Dark.
Storage buffer	pH: 7.40 Preservative: 0.02% Sodium azide Constituents: PBS, 30% Glycerol (glycerin, glycerine), 1% BSA
Purity	Protein A purified
Clonality	Monoclonal
Clone number	EPR12254-88
Isotype	IgG

Applications

The Abpromise guarantee Our **Abpromise guarantee** covers the use of ab203735 in the following tested applications. The application notes include recommended starting dilutions; optimal dilutions/concentrations should be determined by the end user.

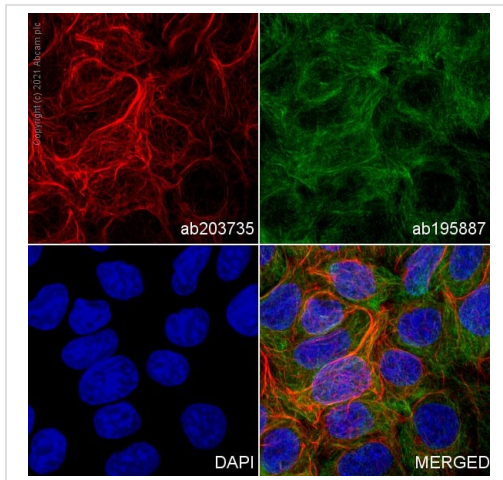
Application	Abreviews	Notes
ICC/IF		1/1000. This product gave a positive signal in SW480 cells fixed with 100% methanol (5 min).

Target

Function	May be involved in mediating calcium-activated chloride conductance. May play critical roles in goblet cell metaplasia, mucus hypersecretion, cystic fibrosis and AHR. May be involved in the regulation of mucus production and/or secretion by goblet cells. Involved in the regulation of tissue inflammation in the innate immune response. May play a role as a tumor suppressor. Induces MUC5AC.
Tissue specificity	Highly expressed in small intestine and colon namely in intestinal basal crypt epithelia and goblet cells, and appendix. Weakly expressed in uterus, testis and kidney. Expressed in the airways epithelium of both asthmatic and healthy patients. Expressed in the bronchial epithelium, especially in mucus-producing goblet cells. Expressed in normal turbinate mucosa and nasal polyp. Expressed in.
Sequence similarities	Belongs to the CLCR family. Contains 1 VWFA domain.
Post-translational modifications	Glycosylated. The 125-kDa product is processed and yields to two cell-surface-associated subunits, a 90-kDa protein and a group of 37-to 41-kDa proteins.
Cellular localization	Secreted > extracellular space. Cell membrane. Protein that remains attached to the plasma

membrane appeared to be predominantly localized to microvilli.

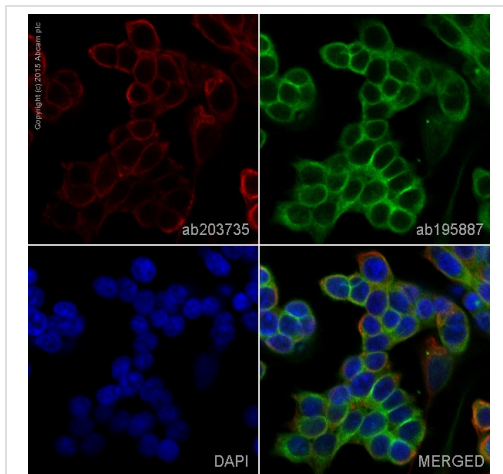
Images



Immunocytochemistry/ Immunofluorescence - Alexa Fluor® 647 Anti-CLCA1 antibody [EPR12254-88] (ab203735)

ab203735 staining CLCA1 in Caco-2 cells. The cells were fixed with 100% methanol (5min), permeabilized with 0.1% Triton X-100 for 5 minutes and then blocked with 1% BSA/10% normal goat serum/0.3M glycine in 0.1% PBS-Tween for 1h. The cells were then incubated overnight at +4°C with ab203735 at 1/100 dilution (shown in red) and **ab195887**, Mouse monoclonal to alpha Tubulin (Alexa Fluor® 488), at 1/250 dilution (shown in green). Nuclear DNA was labelled with DAPI (shown in blue).

Image was acquired with a high-content analyser (Operetta CLS, Perkin Elmer) and a maximum intensity projection of confocal sections is shown.



Immunocytochemistry/ Immunofluorescence - Alexa Fluor® 647 Anti-CLCA1 antibody [EPR12254-88] (ab203735)

ab203735 staining CLCA1 in SW480 cells. The cells were fixed with 100% methanol (5min), permeabilized with 0.1% Triton X-100 for 5 minutes and then blocked with 1% BSA/10% normal goat serum/0.3M glycine in 0.1% PBS-Tween for 1h. The cells were then incubated overnight at +4°C with ab203735 at 1/1000 dilution (shown in red) and **ab195887**, Mouse monoclonal to alpha Tubulin (Alexa Fluor® 488), at 1/250 dilution (shown in green). Nuclear DNA was labelled with DAPI (shown in blue).

Image was taken with a confocal microscope (Leica-Microsystems, TCS SP8).

Why choose a recombinant antibody?



Research with confidence
Consistent and reproducible results



Long-term and scalable supply
Recombinant technology



Success from the first experiment
Confirmed specificity



Ethical standards compliant
Animal-free production

Alexa Fluor® 647 Anti-CLCA1 antibody [EPR12254-88] (ab203735)

Please note: All products are "FOR RESEARCH USE ONLY. NOT FOR USE IN DIAGNOSTIC PROCEDURES"

Our Abpromise to you: Quality guaranteed and expert technical support

- Replacement or refund for products not performing as stated on the datasheet
- Valid for 12 months from date of delivery
- Response to your inquiry within 24 hours
- We provide support in Chinese, English, French, German, Japanese and Spanish
- Extensive multi-media technical resources to help you
- We investigate all quality concerns to ensure our products perform to the highest standards

If the product does not perform as described on this datasheet, we will offer a refund or replacement. For full details of the Abpromise, please visit <https://www.abcam.com/abpromise> or contact our technical team.

Terms and conditions

- Guarantee only valid for products bought direct from Abcam or one of our authorized distributors