


Product datasheet

Alexa Fluor® 647 Anti-LY75/DEC-205 antibody [EPR5233] αb200326

Recombinant RabMAb

2 Images

Overview

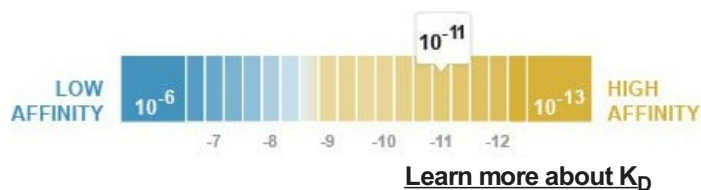
| | |
|---------------------|--|
| Product name | Alexa Fluor® 647 Anti-LY75/DEC-205 antibody [EPR5233] |
| Description | Alexa Fluor® 647 Rabbit monoclonal [EPR5233] to LY75/DEC-205 |
| Host species | Rabbit |
| Conjugation | Alexa Fluor® 647. Ex: 652nm, Em: 668nm |
| Tested applications | Suitable for: ICC/IF |
| Species reactivity | Reacts with: Human Predicted to work with: Mouse  Does not react with: Rat |
| Immunogen | Synthetic peptide. This information is proprietary to Abcam and/or its suppliers. |
| Positive control | ICC/IF: Raji cells. |
| General notes | <p>Our RabMAb® technology is a patented hybridoma-based technology for making rabbit monoclonal antibodies. For details on our patents, please refer to RabMAb® patents.</p> <p>Alexa Fluor® is a registered trademark of Molecular Probes, Inc, a Thermo Fisher Scientific Company. The Alexa Fluor® dye included in this product is provided under an intellectual property license from Life Technologies Corporation. As this product contains the Alexa Fluor® dye, the purchase of this product conveys to the buyer the non-transferable right to use the purchased product and components of the product only in research conducted by the buyer (whether the buyer is an academic or for-profit entity). As this product contains the Alexa Fluor® dye the sale of this product is expressly conditioned on the buyer not using the product or its components, or any materials made using the product or its components, in any activity to generate revenue, which may include, but is not limited to use of the product or its components: (i) in manufacturing; (ii) to provide a service, information, or data in return for payment (iii) for therapeutic, diagnostic or prophylactic purposes; or (iv) for resale, regardless of whether they are sold for use in research. For information on purchasing a license to this product for purposes other than research, contact Life Technologies Corporation, 5781 Van Allen Way, Carlsbad, CA 92008 USA or outlicensing@thermofisher.com.</p> |

Properties

| | |
|------|--------|
| Form | Liquid |
|------|--------|

Storage instructions Shipped at 4°C. Store at +4°C short term (1-2 weeks). Upon delivery aliquot. Store at -20°C. Stable for 12 months at -20°C. Store In the Dark.

Dissociation constant (K_D) K_D = 2.54 x 10⁻¹¹ M



Storage buffer pH: 7.40
Preservative: 0.02% Sodium azide
Constituents: 30% Glycerol (glycerin, glycerine), 1% BSA, PBS

Purity Protein A purified

Clonality Monoclonal

Clone number EPR5233

Isotype IgG

Applications

The Abpromise guarantee Our **Abpromise guarantee** covers the use of ab200326 in the following tested applications. The application notes include recommended starting dilutions; optimal dilutions/concentrations should be determined by the end user.

| Application | Abreviews | Notes |
|-------------|-----------|---|
| ICC/IF | | 1/100. This product gave a positive signal in Raji cells fixed with 4% formaldehyde (10 min) and 80% methanol (5 min). |

Target

Function Acts as an endocytic receptor to direct captured antigens from the extracellular space to a specialized antigen-processing compartment (By similarity). Causes reduced proliferation of B-lymphocytes.

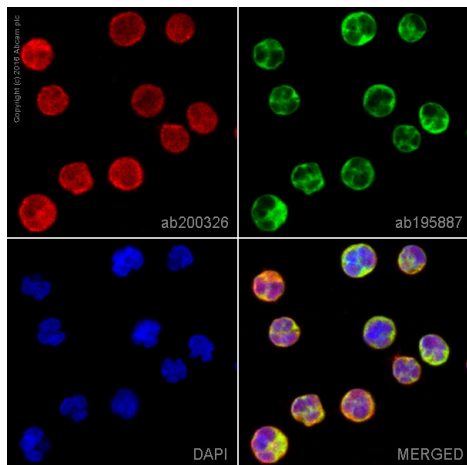
Tissue specificity Expressed in spleen, thymus, colon and peripheral blood lymphocytes. Detected in myeloid and B lymphoid cell lines. Isoform 2 and isoform 3 are expressed in malignant Hodgkin lymphoma cells called Hodgkin and Reed-Sternberg (HRS) cells.

Sequence similarities Contains 10 C-type lectin domains.
Contains 1 fibronectin type-II domain.
Contains 1 ricin B-type lectin domain.

Post-translational modifications N-glycosylated.

Cellular localization Membrane.

Images



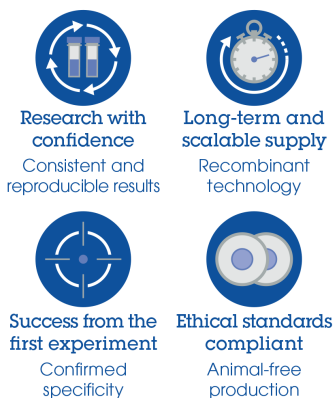
Immunocytochemistry/ Immunofluorescence - Alexa Fluor® 647 Anti-LY75/DEC-205 antibody [EPR5233] (ab200326)

ab200326 staining LY75/DEC-205 in Raji cells. The cells were fixed with 4% formaldehyde (10 min) and then incubated in 1%BSA/10% normal goat serum/0.3M glycine in 0.1% PBS-Tween for 1h to permeabilise the cells and block non-specific protein-protein interactions. The cells were then incubated overnight at +4°C with ab200326 at 1/100 dilution (shown in red) and **ab195887**, Mouse monoclonal to alpha Tubulin (Alexa Fluor® 488), at 1/250 dilution (shown in green). Nuclear DNA was labelled with DAPI (shown in blue).

Image was taken with a confocal microscope (Leica-Microsystems, TCS SP8).

This product also gave a positive signal under the same testing conditions in Raji cells fixed with 80% methanol (5 min).

Why choose a recombinant antibody?



Alexa Fluor® 647 Anti-LY75/DEC-205 antibody [EPR5233] (ab200326)

Please note: All products are "FOR RESEARCH USE ONLY. NOT FOR USE IN DIAGNOSTIC PROCEDURES"

Our Abpromise to you: Quality guaranteed and expert technical support

- Replacement or refund for products not performing as stated on the datasheet
- Valid for 12 months from date of delivery
- Response to your inquiry within 24 hours
- We provide support in Chinese, English, French, German, Japanese and Spanish
- Extensive multi-media technical resources to help you
- We investigate all quality concerns to ensure our products perform to the highest standards

If the product does not perform as described on this datasheet, we will offer a refund or replacement. For full details of the Abpromise, please visit <https://www.abcam.com/abpromise> or contact our technical team.

Terms and conditions

- Guarantee only valid for products bought direct from Abcam or one of our authorized distributors