



Alkaline Phosphatase Anti-HA tag antibody [16B12] ab81656

[1 Image](#)

Overview

Product name	Alkaline Phosphatase Anti-HA tag antibody [16B12]
Description	Alkaline Phosphatase Mouse monoclonal [16B12] to HA tag
Host species	Mouse
Conjugation	Alkaline Phosphatase
Tested applications	Suitable for: WB
Species reactivity	Reacts with: Species independent
Immunogen	Synthetic peptide: CYPYDVPDYASL
	<div>  Run BLAST with </div> <div>  Run BLAST with </div>
Epitope	The HA.11 antibody recognizes the influenza hemagglutinin epitope (YPYDVPDYA) which has been used extensively as a general epitope tag in expression vectors. The HA.11 antibody recognizes HA epitopes located in the middle of protein sequences as well as at the N- or C-terminus.
General notes	<p>The Life Science industry has been in the grips of a reproducibility crisis for a number of years. Abcam is leading the way in addressing this with our range of recombinant monoclonal antibodies and knockout edited cell lines for gold-standard validation. Please check that this product meets your needs before purchasing.</p> <p>If you have any questions, special requirements or concerns, please send us an inquiry and/or contact our Support team ahead of purchase. Recommended alternatives for this product can be found below, along with publications, customer reviews and Q&As</p>

Properties

Form	Liquid
Storage instructions	Shipped at 4°C. Store at +4°C short term (1-2 weeks). Store at -20°C or -80°C. Avoid freeze / thaw cycle.
Storage buffer	<p>pH: 7.20</p> <p>Preservative: 0.013% Sodium azide</p> <p>Constituents: 0.87% Sodium chloride, 0.3025% Tris</p>

Purity	Size exclusion
Clonality	Monoclonal
Clone number	16B12
Isotype	IgG1

Applications

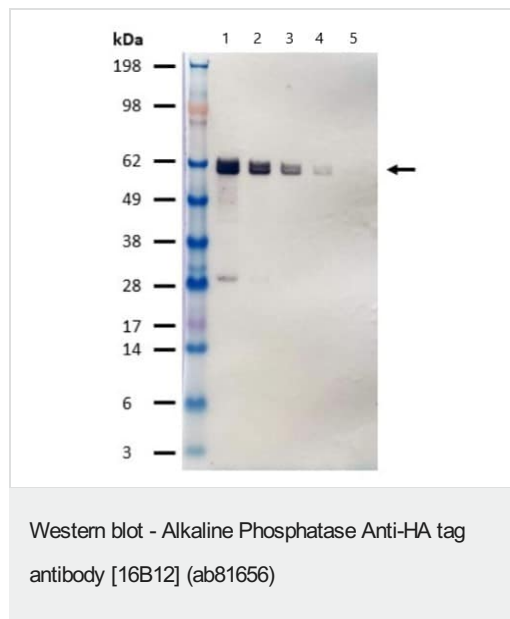
The Abpromise guarantee Our **Abpromise guarantee** covers the use of ab81656 in the following tested applications. The application notes include recommended starting dilutions; optimal dilutions/concentrations should be determined by the end user.

Application	Abreviews	Notes
WB		1/5000.

Target

Relevance Human influenza hemagglutinin (HA) is a surface glycoprotein required for the infectivity of the human virus. The HA tag is derived from the HA molecule corresponding to amino acids 98-106 has been extensively used as a general epitope tag in expression vectors. Many recombinant proteins have been engineered to express the HA tag, which does not appear to interfere with the bioactivity or the biodistribution of the recombinant protein. This tag facilitates the detection, isolation, and purification of the proteins.

Images



All lanes : Alkaline Phosphatase Anti-HA tag antibody [16B12] (ab81656) at 1/10000 dilution

Lane 1 : 60 kDa HA-tagged protein at 0.3 µg

Lane 2 : 60 kDa HA-tagged protein at 0.01 µg

Lane 3 : 60 kDa HA-tagged protein at 0.03 µg

Lane 4 : 60 kDa HA-tagged protein at 0.001 µg

Lane 5 : 60 kDa HA-tagged protein at 0.003 µg

Imaged using stabilized Alkaline Phosphatase substrate.

Please note: All products are "FOR RESEARCH USE ONLY. NOT FOR USE IN DIAGNOSTIC PROCEDURES"

Our Abpromise to you: Quality guaranteed and expert technical support

- Replacement or refund for products not performing as stated on the datasheet
- Valid for 12 months from date of delivery
- Response to your inquiry within 24 hours

- We provide support in Chinese, English, French, German, Japanese and Spanish
- Extensive multi-media technical resources to help you
- We investigate all quality concerns to ensure our products perform to the highest standards

If the product does not perform as described on this datasheet, we will offer a refund or replacement. For full details of the Abpromise, please visit <https://www.abcam.com/abpromise> or contact our technical team.

Terms and conditions

- Guarantee only valid for products bought direct from Abcam or one of our authorized distributors