

# Alkaline Phosphatase Anti-S tag antibody ab133157

1 Image

## Overview

<b>Product name</b>	Alkaline Phosphatase Anti-S tag antibody
<b>Description</b>	Alkaline Phosphatase Rabbit polyclonal to S tag
<b>Host species</b>	Rabbit
<b>Conjugation</b>	Alkaline Phosphatase
<b>Tested applications</b>	<b>Suitable for:</b> WB, ELISA
<b>Species reactivity</b>	<b>Reacts with:</b> Species independent
<b>Immunogen</b>	S tag sequence KETAAAKFERQHMS

 [Run BLAST with](#)

 [Run BLAST with](#)

## General notes

The Life Science industry has been in the grips of a reproducibility crisis for a number of years. Abcam is leading the way in addressing this with our range of recombinant monoclonal antibodies and knockout edited cell lines for gold-standard validation. Please check that this product meets your needs before purchasing.

If you have any questions, special requirements or concerns, please send us an inquiry and/or contact our Support team ahead of purchase. Recommended alternatives for this product can be found below, along with publications, customer reviews and Q&As

## Properties

<b>Form</b>	Lyophilized: Prior to use, reconstitute to 1 mL with ddH <sub>2</sub> O, vortex gently and allow material to reconstitute for 20 minutes. Avoid exposure to heat. After product has been reconstituted, store at 2-8°C in the dark and use within 6 months. For extended storage, add an equal volume of glycerol (ACS grade) for a final concentration of 50%, and store at -20 degrees Celsius. Prepare a working dilution daily.
<b>Storage instructions</b>	Shipped at 4°C. Store at +4°C short term (1-2 weeks). Store at -20°C or -80°C. Avoid freeze / thaw cycle.
<b>Storage buffer</b>	pH: 7.40 Preservative: 0.013% Sodium azide Constituents: 0.3% Tris, 0.88% Sodium chloride, 0.047% Magnesium chloride, 0.0016% Zinc chloride

<b>Clonality</b>	Polyclonal
<b>Isotype</b>	IgG

## Applications

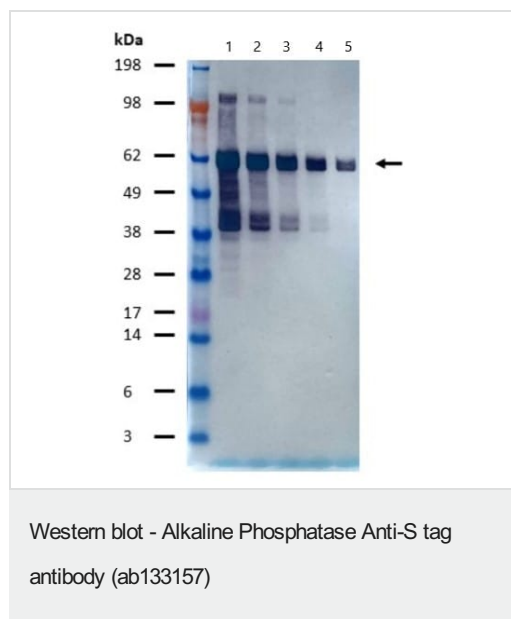
**The Abpromise guarantee** Our **Abpromise guarantee** covers the use of ab133157 in the following tested applications. The application notes include recommended starting dilutions; optimal dilutions/concentrations should be determined by the end user.

Application	Abreviews	Notes
<b>WB</b>		1/5000 - 1/50000. Starting dilution: 1/2000
<b>ELISA</b>		1/5000 - 1/50000.

## Target

**Relevance** S tag is an epitope tag composed of a 15 residue peptide, KETAAAKFERQHMDs, derived from the pancreatic ribonuclease A.

## Images



**All lanes :** Alkaline Phosphatase Anti-S tag antibody (ab133157) at 1/10000 dilution

**Lane 1 :** 60 kDa S-tagged protein at 0.3 µg

**Lane 2 :** 60 kDa S-tagged protein at 0.01 µg

**Lane 3 :** 60 kDa S-tagged protein at 0.03 µg

**Lane 4 :** 60 kDa S-tagged protein at 0.001 µg

**Lane 5 :** 60 kDa S-tagged protein at 0.003 µg

Imaged using stabilized Alkaline Phosphatase substrate.

**Please note:** All products are "FOR RESEARCH USE ONLY. NOT FOR USE IN DIAGNOSTIC PROCEDURES"

## Our Abpromise to you: Quality guaranteed and expert technical support

- Replacement or refund for products not performing as stated on the datasheet
- Valid for 12 months from date of delivery
- Response to your inquiry within 24 hours

- We provide support in Chinese, English, French, German, Japanese and Spanish
- Extensive multi-media technical resources to help you
- We investigate all quality concerns to ensure our products perform to the highest standards

If the product does not perform as described on this datasheet, we will offer a refund or replacement. For full details of the Abpromise, please visit <https://www.abcam.com/abpromise> or contact our technical team.

#### **Terms and conditions**

---

- Guarantee only valid for products bought direct from Abcam or one of our authorized distributors