

# Alkaline Phosphatase Anti-T7 tag® antibody ab133151

1 Image

### Overview

<b>Product name</b>	Alkaline Phosphatase Anti-T7 tag® antibody
<b>Description</b>	Alkaline Phosphatase Rabbit polyclonal to T7 tag®
<b>Host species</b>	Rabbit
<b>Conjugation</b>	Alkaline Phosphatase
<b>Tested applications</b>	<b>Suitable for:</b> WB, ELISA
<b>Species reactivity</b>	<b>Reacts with:</b> Species independent
<b>Immunogen</b>	Synthetic peptide: MASMTGGQQMG , corresponding to amino acids 1-11 of T7 tag®

 [Run BLAST with](#)

 [Run BLAST with](#)

### General notes

The Life Science industry has been in the grips of a reproducibility crisis for a number of years. Abcam is leading the way in addressing this with our range of recombinant monoclonal antibodies and knockout edited cell lines for gold-standard validation. Please check that this product meets your needs before purchasing.

If you have any questions, special requirements or concerns, please send us an inquiry and/or contact our Support team ahead of purchase. Recommended alternatives for this product can be found below, along with publications, customer reviews and Q&As

### Properties

<b>Form</b>	Lyophilized: Reconstitute to 1 mL with ddH <sub>2</sub> O, vortex gently and allow material to reconstitute for 20 minutes, avoid exposure to heat. After product has been reconstituted, product should be stored at 2-8 °C in the dark and be used within 6 months. For extended storage, add an equal volume of glycerol (ACS grade) for a final concentration of 50%, and store at -20 degrees Celsius. Prepare a working dilution daily.
<b>Storage instructions</b>	Shipped at 4°C. Store at +4°C short term (1-2 weeks). Store at -20°C or -80°C. Avoid freeze / thaw cycle.
<b>Storage buffer</b>	pH: 7.40 Preservative: 0.013% Sodium azide Constituents: 0.3% Tris, 0.88% Sodium chloride, 0.05% Magnesium chloride, 0.0016% Zinc chloride

<b>Clonality</b>	Polyclonal
<b>Isotype</b>	IgG

## Applications

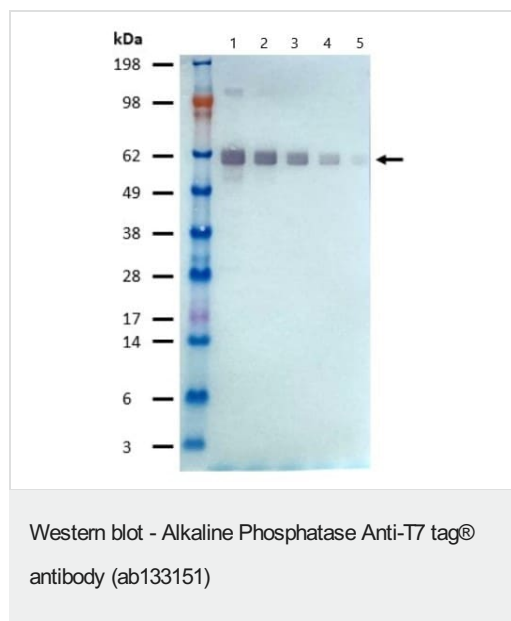
**The Abpromise guarantee** Our **Abpromise guarantee** covers the use of ab133151 in the following tested applications. The application notes include recommended starting dilutions; optimal dilutions/concentrations should be determined by the end user.

Application	Abreviews	Notes
WB		1/5000 - 1/50000.
ELISA		1/5000 - 1/50000.

## Target

**Relevance** The T7 tag is an 11 amino acid peptide encoded in the leader sequence of T7 bacteriophage gene10. This gene encodes a T7 major capsid protein whose function is not clear. The T7 tag serves as a tag in many expression vectors including the pET system that is based on the very efficient T7 RNA polymerase expression system. Monoclonal antibodies specific for T7 tag are an important tool for studying expression of recombinant T7-tagged proteins.

## Images



**All lanes** : Alkaline Phosphatase Anti-T7 tag® antibody (ab133151) at 1/10000 dilution

**Lane 1** : 60 kDa T7-tagged protein at 0.3 µg

**Lane 2** : 60 kDa T7-tagged protein at 0.01 µg

**Lane 3** : 60 kDa T7-tagged protein at 0.03 µg

**Lane 4** : 60 kDa T7-tagged protein at 0.001 µg

**Lane 5** : 60 kDa T7-tagged protein at 0.003 µg

Imaged using stabilized Alkaline Phosphatase substrate.

**Please note:** All products are "FOR RESEARCH USE ONLY. NOT FOR USE IN DIAGNOSTIC PROCEDURES"

**Our Abpromise to you: Quality guaranteed and expert technical support**

- Replacement or refund for products not performing as stated on the datasheet
- Valid for 12 months from date of delivery
- Response to your inquiry within 24 hours
- We provide support in Chinese, English, French, German, Japanese and Spanish
- Extensive multi-media technical resources to help you
- We investigate all quality concerns to ensure our products perform to the highest standards

If the product does not perform as described on this datasheet, we will offer a refund or replacement. For full details of the Abpromise, please visit <https://www.abcam.com/abpromise> or contact our technical team.

#### **Terms and conditions**

---

- Guarantee only valid for products bought direct from Abcam or one of our authorized distributors