


Product datasheet

Anti-ALP antibody ab154100

[3 References](#) [1 Image](#)

Overview

Product name	Anti-ALP antibody
Description	Rabbit polyclonal to ALP
Host species	Rabbit
Tested applications	Suitable for: WB
Species reactivity	Reacts with: Human Predicted to work with: Mouse, Cow 
Immunogen	Recombinant fragment, corresponding to a region within amino acids 89-266 of Human ALP.
Positive control	293T, A431, HepG2 whole cell lysate
General notes	<p>The Life Science industry has been in the grips of a reproducibility crisis for a number of years. Abcam is leading the way in addressing this with our range of recombinant monoclonal antibodies and knockout edited cell lines for gold-standard validation. Please check that this product meets your needs before purchasing.</p> <p>If you have any questions, special requirements or concerns, please send us an inquiry and/or contact our Support team ahead of purchase. Recommended alternatives for this product can be found below, along with publications, customer reviews and Q&As</p>

Properties

Form	Liquid
Storage instructions	Shipped at 4°C. Upon delivery aliquot and store at -20°C or -80°C. Avoid repeated freeze / thaw cycles.
Storage buffer	pH: 7.00 Preservative: 0.025% Proclin 300 Constituents: 78% PBS, 1% BSA, 20% Glycerol (glycerin, glycerine)
Purity	Immunogen affinity purified
Clonality	Polyclonal
Isotype	IgG

Applications

The Abpromise guarantee

Our **Abpromise guarantee** covers the use of ab154100 in the following tested applications.

The application notes include recommended starting dilutions; optimal dilutions/concentrations should be determined by the end user.

Application	Abreviews	Notes
WB		1/500 - 1/3000. Predicted molecular weight: 39 kDa.

Target

Function

May play a role in the organization of actin filament arrays within muscle cells.

Tissue specificity

Isoform 1 is highly expressed in differentiated skeletal muscle. Isoform 2 is heart-specific.

Sequence similarities

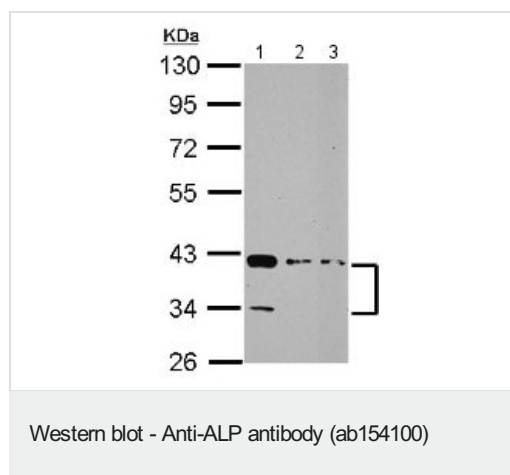
Contains 1 LIM zinc-binding domain.

Contains 1 PDZ (DHR) domain.

Cellular localization

Cytoplasm > myofibril > sarcomere > Z line. Localizes to myofiber Z-lines.

Images



All lanes : Anti-ALP antibody (ab154100) at 1/1000 dilution

Lane 1 : 293T whole cell lysate

Lane 2 : A431 whole cell lysate

Lane 3 : HepG2 whole cell lysate

Lysates/proteins at 30 µg per lane.

Predicted band size: 39 kDa

10% SDS PAGE

Please note: All products are "FOR RESEARCH USE ONLY. NOT FOR USE IN DIAGNOSTIC PROCEDURES"

Our Abpromise to you: Quality guaranteed and expert technical support

- Replacement or refund for products not performing as stated on the datasheet
- Valid for 12 months from date of delivery
- Response to your inquiry within 24 hours
- We provide support in Chinese, English, French, German, Japanese and Spanish
- Extensive multi-media technical resources to help you
- We investigate all quality concerns to ensure our products perform to the highest standards

If the product does not perform as described on this datasheet, we will offer a refund or replacement. For full details of the Abpromise,

please visit <https://www.abcam.com/abpromise> or contact our technical team.

Terms and conditions

- Guarantee only valid for products bought direct from Abcam or one of our authorized distributors