

## Product datasheet

# Anti-Alpha 1 Acid Glycoprotein/AGP antibody [EPR5605] ab134042

Recombinant RabMAb

[4 References](#) [3 Images](#)

### Overview

---

<b>Product name</b>	Anti-Alpha 1 Acid Glycoprotein/AGP antibody [EPR5605]
<b>Description</b>	Rabbit monoclonal [EPR5605] to Alpha 1 Acid Glycoprotein/AGP
<b>Host species</b>	Rabbit
<b>Tested applications</b>	<b>Suitable for:</b> WB, IHC-P <b>Unsuitable for:</b> ICC/IF or IP
<b>Species reactivity</b>	<b>Reacts with:</b> Human
<b>Immunogen</b>	Synthetic peptide within Human Alpha 1 Acid Glycoprotein/AGP aa 50-150. The exact sequence is proprietary.
<b>Positive control</b>	Human small intestine, plasma and testis lysates; Human liver tissue.
<b>General notes</b>	<p>This product is a recombinant monoclonal antibody, which offers several advantages including:</p> <ul style="list-style-type: none"><li>- High batch-to-batch consistency and reproducibility</li><li>- Improved sensitivity and specificity</li><li>- Long-term security of supply</li><li>- Animal-free production</li></ul> <p>For more information <a href="#">see here</a>.</p> <p>Our RabMAb<sup>®</sup> technology is a patented hybridoma-based technology for making rabbit monoclonal antibodies. For details on our patents, please refer to <a href="#">RabMAb<sup>®</sup> patents</a>.</p> <p>Mouse, Rat: We have preliminary internal testing data to indicate this antibody may not react with these species. Please contact us for more information.</p>

### Properties

---

<b>Form</b>	Liquid
<b>Storage instructions</b>	Shipped at 4°C. Store at -20°C. Stable for 12 months at -20°C.
<b>Storage buffer</b>	pH: 7.20 Preservative: 0.05% Sodium azide Constituents: 0.1% BSA, 40% Glycerol (glycerin, glycerine), 9.85% Tris glycine, 50% Tissue culture supernatant

<b>Purity</b>	Protein A purified
<b>Clonality</b>	Monoclonal
<b>Clone number</b>	EPR5605
<b>Isotype</b>	IgG

## Applications

**The Abpromise guarantee** Our **Abpromise guarantee** covers the use of ab134042 in the following tested applications. The application notes include recommended starting dilutions; optimal dilutions/concentrations should be determined by the end user.

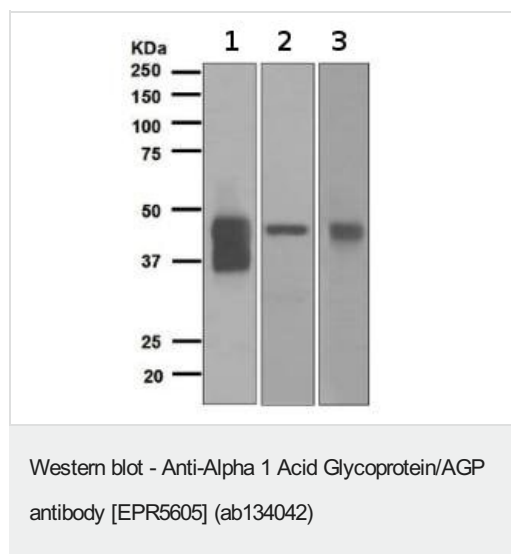
Application	Abreviews	Notes
<b>WB</b>		1/1000 - 1/10000. Detects a band of approximately 41-47 kDa.
<b>IHC-P</b>		1/250 - 1/500. Perform heat mediated antigen retrieval via the pressure cooker method before commencing with IHC staining protocol.

**Application notes** Is unsuitable for ICC/IF or IP.

## Target

<b>Function</b>	Appears to function in modulating the activity of the immune system during the acute-phase reaction.
<b>Tissue specificity</b>	Expressed by the liver and secreted in plasma.
<b>Sequence similarities</b>	Belongs to the calycin superfamily. Lipocalin family.
<b>Cellular localization</b>	Secreted.

## Images



**All lanes** : Anti-Alpha 1 Acid Glycoprotein/AGP antibody [EPR5605] (ab134042) at 1/1000 dilution

**Lane 1** : Human small intestine lysate

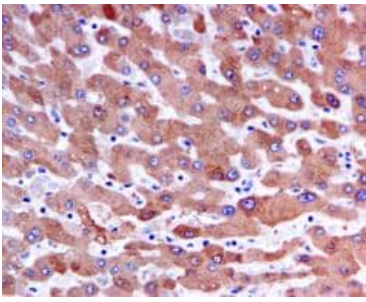
**Lane 2** : Human plasma

**Lane 3** : Human testis lysate

Lysates/proteins at 10 µg per lane.

### Secondary

**All lanes** : HRP labelled goat anti-rabbit at 1/2000 dilution



Immunohistochemistry (Formalin/PFA-fixed paraffin-embedded sections) - Anti-Alpha 1 Acid Glycoprotein/AGP antibody [EPR5605] (ab134042)

Immunohistochemical analysis of paraffin-embedded Human liver tissue labelling Alpha-1-Acid Glycoprotein / AGP with ab134042 at 1/250 dilution.

Perform heat mediated antigen retrieval via the pressure cooker method before commencing with IHC staining protocol.

### Why choose a recombinant antibody?



Anti-Alpha 1 Acid Glycoprotein/AGP antibody [EPR5605] (ab134042)

**Please note:** All products are "FOR RESEARCH USE ONLY. NOT FOR USE IN DIAGNOSTIC PROCEDURES"

### Our Abpromise to you: Quality guaranteed and expert technical support

- Replacement or refund for products not performing as stated on the datasheet
- Valid for 12 months from date of delivery
- Response to your inquiry within 24 hours
- We provide support in Chinese, English, French, German, Japanese and Spanish
- Extensive multi-media technical resources to help you
- We investigate all quality concerns to ensure our products perform to the highest standards

If the product does not perform as described on this datasheet, we will offer a refund or replacement. For full details of the Abpromise, please visit <https://www.abcam.com/abpromise> or contact our technical team.

### Terms and conditions

- Guarantee only valid for products bought direct from Abcam or one of our authorized distributors