

## Product datasheet

# Anti-alpha 1 Fetoprotein antibody [EPR9309] ab169552

Recombinant RabMAb

[10 References](#) [7 Images](#)

### Overview

---

<b>Product name</b>	Anti-alpha 1 Fetoprotein antibody [EPR9309]
<b>Description</b>	Rabbit monoclonal [EPR9309] to alpha 1 Fetoprotein
<b>Host species</b>	Rabbit
<b>Tested applications</b>	<b>Suitable for:</b> Flow Cyt (Intra), WB, IHC-P, ICC/IF, IP
<b>Species reactivity</b>	<b>Reacts with:</b> Human
<b>Immunogen</b>	Recombinant fragment within Human alpha 1 Fetoprotein. The exact sequence is proprietary.
<b>Positive control</b>	Human plasma, HepG2 and Human fetal liver lysates, Human moderately differentiated hepatocellular carcinoma and Human poorly differentiated hepatocellular carcinoma tissues, HepG2 cells
<b>General notes</b>	<p>This product is a recombinant monoclonal antibody, which offers several advantages including:</p> <ul style="list-style-type: none"><li>- High batch-to-batch consistency and reproducibility</li><li>- Improved sensitivity and specificity</li><li>- Long-term security of supply</li><li>- Animal-free production</li></ul> <p>For more information <a href="#">see here</a>.</p> <p>Our RabMAb<sup>®</sup> technology is a patented hybridoma-based technology for making rabbit monoclonal antibodies. For details on our patents, please refer to <a href="#">RabMAb<sup>®</sup> patents</a>.</p> <p><b>We are constantly working hard to ensure we provide our customers with best in class antibodies. As a result of this work we are pleased to now offer this antibody in purified format. We are in the process of updating our datasheets. The purified format is designated 'PUR' on our product labels. If you have any questions regarding this update, please contact our Scientific Support team.</b></p> <p>Mouse, Rat: We have preliminary internal testing data to indicate this antibody may not react with these species. Please contact us for more information.</p>

### Properties

---

<b>Form</b>	Liquid
<b>Storage instructions</b>	Shipped at 4°C. Store at +4°C short term (1-2 weeks). Upon delivery aliquot. Store at -20°C long term.

<b>Storage buffer</b>	pH: 7.2 Preservative: 0.01% Sodium azide Constituents: 59% PBS, 40% Glycerol (glycerin, glycerine), 0.5% BSA
<b>Purity</b>	Protein A purified
<b>Clonality</b>	Monoclonal
<b>Clone number</b>	EPR9309
<b>Isotype</b>	IgG

## Applications

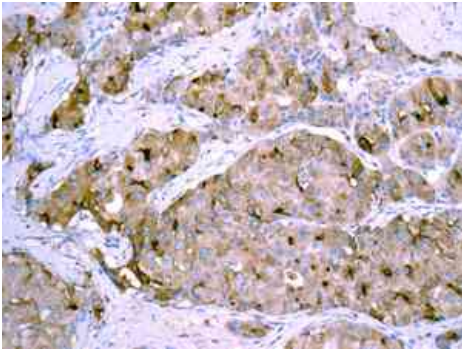
**The Abpromise guarantee** Our **Abpromise guarantee** covers the use of ab169552 in the following tested applications. The application notes include recommended starting dilutions; optimal dilutions/concentrations should be determined by the end user.

Application	Abreviews	Notes
<b>Flow Cyt (Intra)</b>		1/50. <b>ab172730</b> -Rabbit monoclonal IgG, is suitable for use as an isotype control with this antibody.
<b>WB</b>		1/1000 - 1/10000. Detects a band of approximately 70 kDa (predicted molecular weight: 68 kDa).
<b>IHC-P</b>		1/50 - 1/100. Perform heat mediated antigen retrieval with citrate buffer pH 6 before commencing with IHC staining protocol.
<b>ICC/IF</b>		1/100 - 1/250.
<b>IP</b>		1/10 - 1/100.

## Target

<b>Function</b>	Binds copper, nickel, and fatty acids as well as, and bilirubin less well than, serum albumin. Only a small percentage (less than 2%) of the human AFP shows estrogen-binding properties.
<b>Tissue specificity</b>	Plasma. Synthesized by the fetal liver and yolk sac.
<b>Sequence similarities</b>	Belongs to the ALB/AFP/VDB family. Contains 3 albumin domains.
<b>Developmental stage</b>	Occurs in the plasma of fetuses more than 4 weeks old, reaches the highest levels during the 12th-16th week of gestation, and drops to trace amounts after birth. The serum level in adults is usually less than 40 ng/ml. AFP occurs also at high levels in the plasma and ascitic fluid of adults with hepatoma.
<b>Post-translational modifications</b>	Independent studies suggest heterogeneity of the N-terminal sequence of the mature protein and of the cleavage site of the signal sequence. Sulfated.
<b>Cellular localization</b>	Secreted.

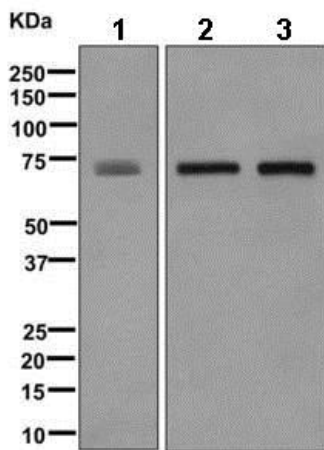
## Images



Immunohistochemistry (Formalin/PFA-fixed paraffin-embedded sections) - Anti-alpha 1 Fetoprotein antibody [EPR9309] (ab169552)

Immunohistochemical analysis of paraffin embedded human moderately differentiated hepatocellular carcinoma tissue labeling alpha 1 Fetoprotein with ab169552 antibody at 1/50.

Perform heat mediated antigen retrieval with citrate buffer pH 6 before commencing with IHC staining protocol.



Western blot - Anti-alpha 1 Fetoprotein antibody [EPR9309] (ab169552)

**All lanes** : Anti-alpha 1 Fetoprotein antibody [EPR9309] (ab169552) at 1/1000 dilution

**Lane 1** : Human plasma lysate

**Lane 2** : HepG2 lysate

**Lane 3** : Human fetal liver lysate

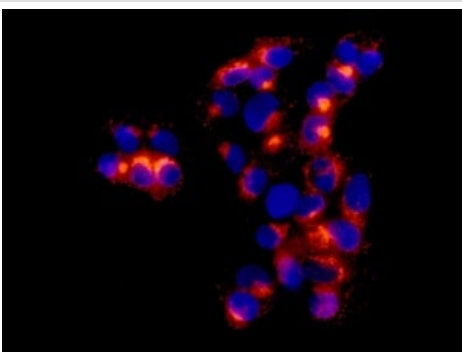
Lysates/proteins at 10 µg per lane.

**Secondary**

**All lanes** : HRP labelled goat anti-rabbit at 1/2000 dilution

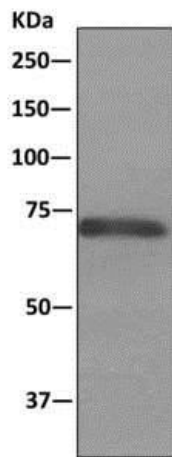
**Predicted band size:** 68 kDa

**Observed band size:** 70 kDa



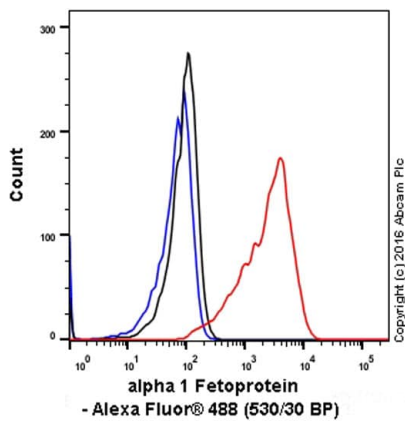
Immunocytochemistry/ Immunofluorescence - Anti-alpha 1 Fetoprotein antibody [EPR9309] (ab169552)

Immunofluorescent analysis of HepG2 cells labeling alpha 1 Fetoprotein with ab169552 at 1/100.



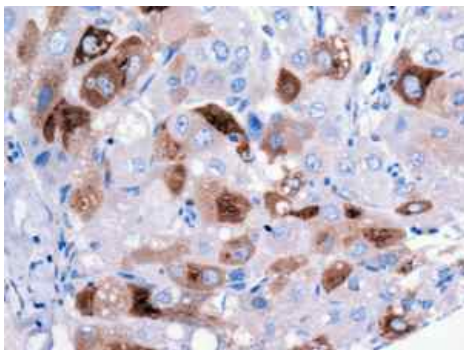
Immunoprecipitation - Anti-alpha 1 Fetoprotein antibody [EPR9309] (ab169552)

Immunoprecipitation. ab169552 at 1/1000 staining alpha 1 Fetoprotein in HepG2 cell lysate immunoprecipitated using ab169552 at 1/10. Predicted band size : 68 kDa.



Flow Cytometry (Intracellular) - Anti-alpha 1 Fetoprotein antibody [EPR9309] (ab169552)

Intracellular Flow Cytometry analysis of HepG2 (human hepatocellular carcinoma) cells labeling alpha 1 Fetoprotein with purified ab169552 at 1/50 dilution (red). The secondary antibody was Goat anti rabbit IgG (Alexa Fluor® 488) at 1/2000 dilution. A Rabbit monoclonal IgG (Black) was used as the isotype control and cells without incubation with primary antibody and secondary antibody (Blue) were used as unlabeled control.



Immunohistochemistry (Formalin/PFA-fixed paraffin-embedded sections) - Anti-alpha 1 Fetoprotein antibody [EPR9309] (ab169552)

Immunohistochemical analysis of paraffin embedded Human poorly differentiated hepatocellular carcinoma tissue labeling alpha 1 Fetoprotein with ab169552 antibody at 1/50.

Perform heat mediated antigen retrieval with citrate buffer pH 6 before commencing with IHC staining protocol.

## Why choose a recombinant antibody?



**Research with confidence**  
Consistent and reproducible results



**Long-term and scalable supply**  
Recombinant technology



**Success from the first experiment**  
Confirmed specificity



**Ethical standards compliant**  
Animal-free production

Anti-alpha 1 Fetoprotein antibody [EPR9309]  
(ab169552)

**Please note:** All products are "FOR RESEARCH USE ONLY. NOT FOR USE IN DIAGNOSTIC PROCEDURES"

### Our Abpromise to you: Quality guaranteed and expert technical support

---

- Replacement or refund for products not performing as stated on the datasheet
- Valid for 12 months from date of delivery
- Response to your inquiry within 24 hours
- We provide support in Chinese, English, French, German, Japanese and Spanish
- Extensive multi-media technical resources to help you
- We investigate all quality concerns to ensure our products perform to the highest standards

If the product does not perform as described on this datasheet, we will offer a refund or replacement. For full details of the Abpromise, please visit <https://www.abcam.com/abpromise> or contact our technical team.

### Terms and conditions

---

- Guarantee only valid for products bought direct from Abcam or one of our authorized distributors