

## Product datasheet

# Anti-Alpha 2 Antiplasmin antibody ab231226

4 Images

### Overview

---

<b>Product name</b>	Anti-Alpha 2 Antiplasmin antibody
<b>Description</b>	Rabbit polyclonal to Alpha 2 Antiplasmin
<b>Host species</b>	Rabbit
<b>Tested applications</b>	<b>Suitable for:</b> WB, IHC-P
<b>Species reactivity</b>	<b>Reacts with:</b> Mouse, Rat
<b>Immunogen</b>	Recombinant fragment (His-tag) corresponding to Rat Alpha 2 Antiplasmin aa 300-500. Expressed in E.coli. Database link: <a href="#">F7FHF3</a> <a href="#">Run BLAST with</a> <a href="#">Run BLAST with</a>
<b>Positive control</b>	WB: Recombinant rat Alpha 2 Antiplasmin protein; Mouse liver lysate. IHC-P: Rat adrenal gland and liver tissues.
<b>General notes</b>	<p>The Life Science industry has been in the grips of a reproducibility crisis for a number of years. Abcam is leading the way in addressing this with our range of recombinant monoclonal antibodies and knockout edited cell lines for gold-standard validation. Please check that this product meets your needs before purchasing.</p> <p>If you have any questions, special requirements or concerns, please send us an inquiry and/or contact our Support team ahead of purchase. Recommended alternatives for this product can be found below, along with publications, customer reviews and Q&amp;As</p>

### Properties

---

<b>Form</b>	Liquid
<b>Storage instructions</b>	Shipped at 4°C. Store at +4°C short term (1-2 weeks). Upon delivery aliquot. Store at -20°C long term. Avoid freeze / thaw cycle.
<b>Storage buffer</b>	pH: 7.40 Preservative: 0.02% Sodium azide Constituents: 44.12% PBS, 55.77% Glycerol (glycerin, glycerine)
<b>Purity</b>	Immunogen affinity purified
<b>Purification notes</b>	Antigen-specific affinity chromatography followed by Protein A affinity chromatography.
<b>Clonality</b>	Polyclonal
<b>Isotype</b>	IgG

## Applications

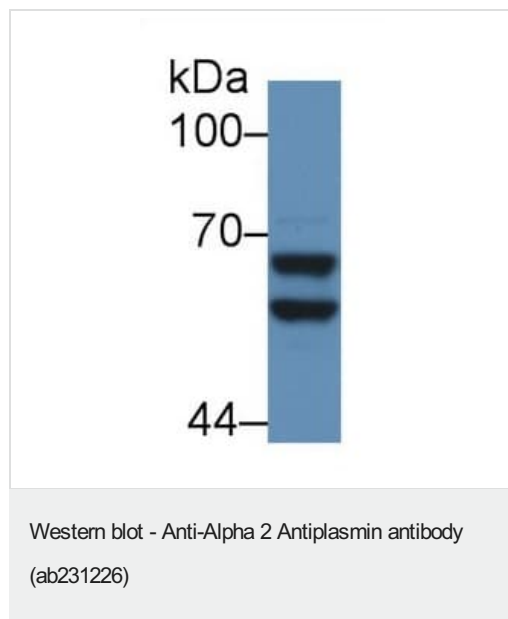
**The Abpromise guarantee** Our **Abpromise guarantee** covers the use of ab231226 in the following tested applications. The application notes include recommended starting dilutions; optimal dilutions/concentrations should be determined by the end user.

Application	Abreviews	Notes
WB		Use a concentration of 0.2 - 2 µg/ml. Predicted molecular weight: 55 kDa.
IHC-P		Use a concentration of 5 - 20 µg/ml.

## Target

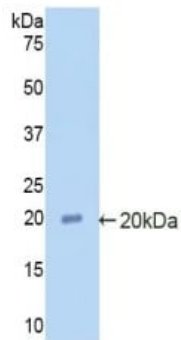
<b>Function</b>	Serine protease inhibitor. The major targets of this inhibitor are plasmin and trypsin, but it also inactivates matriptase-3/TMPRSS7 and chymotrypsin.
<b>Tissue specificity</b>	Expressed by the liver and secreted in plasma.
<b>Involvement in disease</b>	Defects in SERPINF2 are the cause of alpha-2-plasmin inhibitor deficiency (APLID) [MIM:262850]. APLID is an autosomal recessive disorder resulting in severe hemorrhagic diathesis.
<b>Sequence similarities</b>	Belongs to the serpin family.
<b>Cellular localization</b>	Secreted.

## Images



Anti-Alpha 2 Antiplasmin antibody (ab231226) at 2 µg/ml + Mouse liver lysate

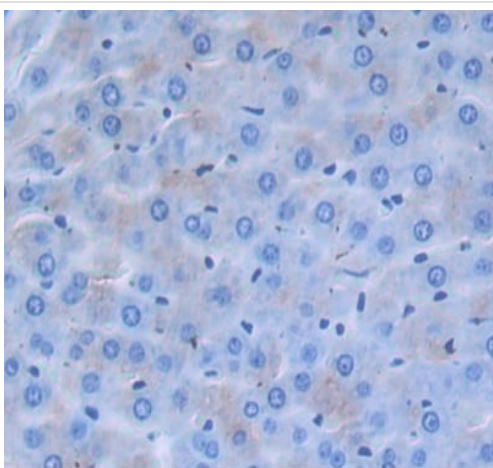
**Predicted band size:** 55 kDa



Western blot - Anti-Alpha 2 Antiplasmin antibody (ab231226)

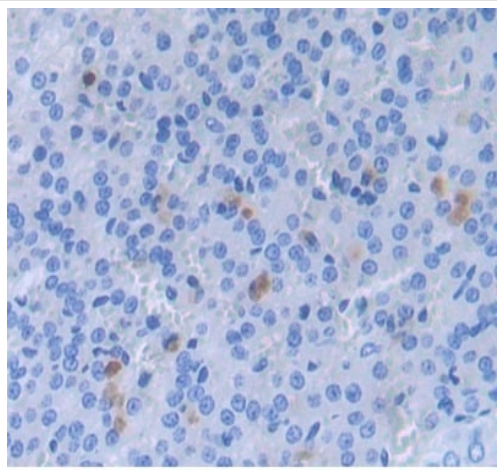
Anti-Alpha 2 Antiplasmin antibody (ab231226) at 2  $\mu\text{g/ml}$  +  
Recombinant rat Alpha 2 Antiplasmin protein

**Predicted band size:** 55 kDa



Immunohistochemistry (Formalin/PFA-fixed paraffin-embedded sections) - Anti-Alpha 2 Antiplasmin antibody (ab231226)

Formalin-fixed, paraffin-embedded rat liver tissue stained for Alpha 2 Antiplasmin using ab231226 at 2  $\mu\text{g/mL}$  in immunohistochemical analysis. DAB staining.



Formalin-fixed, paraffin-embedded rat adrenal tissue stained for Alpha 2 Antiplasmin using ab231226 at 2 µg/mL in immunohistochemical analysis. DAB staining.

Immunohistochemistry (Formalin/PFA-fixed paraffin-embedded sections) - Anti-Alpha 2 Antiplasmin antibody (ab231226)

**Please note:** All products are "FOR RESEARCH USE ONLY. NOT FOR USE IN DIAGNOSTIC PROCEDURES"

### **Our Abpromise to you: Quality guaranteed and expert technical support**

---

- Replacement or refund for products not performing as stated on the datasheet
- Valid for 12 months from date of delivery
- Response to your inquiry within 24 hours
- We provide support in Chinese, English, French, German, Japanese and Spanish
- Extensive multi-media technical resources to help you
- We investigate all quality concerns to ensure our products perform to the highest standards

If the product does not perform as described on this datasheet, we will offer a refund or replacement. For full details of the Abpromise, please visit <https://www.abcam.com/abpromise> or contact our technical team.

### **Terms and conditions**

---

- Guarantee only valid for products bought direct from Abcam or one of our authorized distributors