

# Anti-alpha 2 Macroglobulin antibody [EPR4432] - BSA and Azide free ab247855

Recombinant RabMAb

3 Images

## Overview

Product name	Anti-alpha 2 Macroglobulin antibody [EPR4432] - BSA and Azide free
Description	Rabbit monoclonal [EPR4432] to alpha 2 Macroglobulin - BSA and Azide free
Host species	Rabbit
Tested applications	<b>Suitable for:</b> IHC-P, WB <b>Unsuitable for:</b> Flow Cyt, ICC/IF or IP
Species reactivity	<b>Reacts with:</b> Human
Immunogen	Synthetic peptide. This information is proprietary to Abcam and/or its suppliers.
General notes	<p>ab247855 is the carrier-free version of <a href="#">ab109422</a>.</p> <p>Our <b>carrier-free</b> antibodies are typically supplied in a PBS-only formulation, purified and free of BSA, sodium azide and glycerol. The carrier-free buffer and high concentration allow for increased conjugation efficiency.</p> <p>This conjugation-ready format is designed for use with fluorochromes, metal isotopes, oligonucleotides, and enzymes, which makes them ideal for antibody labelling, functional and cell-based assays, flow-based assays (e.g. mass cytometry) and Multiplex Imaging applications.</p> <p>Use our <b>conjugation kits</b> for antibody conjugates that are ready-to-use in as little as 20 minutes with &lt;1 minute hands-on-time and 100% antibody recovery: available for fluorescent dyes, HRP, biotin and gold.</p> <p>This product is compatible with the Maxpar<sup>®</sup> Antibody Labeling Kit from Fluidigm, without the need for antibody preparation. Maxpar<sup>®</sup> is a trademark of Fluidigm Canada Inc.</p> <p>This product is a recombinant monoclonal antibody, which offers several advantages including:</p> <ul style="list-style-type: none"> <li>- High batch-to-batch consistency and reproducibility</li> <li>- Improved sensitivity and specificity</li> <li>- Long-term security of supply</li> <li>- Animal-free production</li> </ul> <p>For more information <a href="#">see here</a>.</p> <p>Our RabMAb<sup>®</sup> technology is a patented hybridoma-based technology for making rabbit monoclonal antibodies. For details on our patents, please refer to <a href="#">RabMAb<sup>®</sup> patents</a>.</p> <p>Mouse, Rat: We have preliminary internal testing data to indicate this antibody may not react with</p>

these species. Please contact us for more information.

## Properties

<b>Form</b>	Liquid
<b>Storage instructions</b>	Shipped at 4°C. Store at +4°C. Do Not Freeze.
<b>Storage buffer</b>	pH: 7.2 Constituent: PBS
<b>Carrier free</b>	Yes
<b>Purity</b>	Protein A purified
<b>Clonality</b>	Monoclonal
<b>Clone number</b>	EPR4432
<b>Isotype</b>	IgG

## Applications

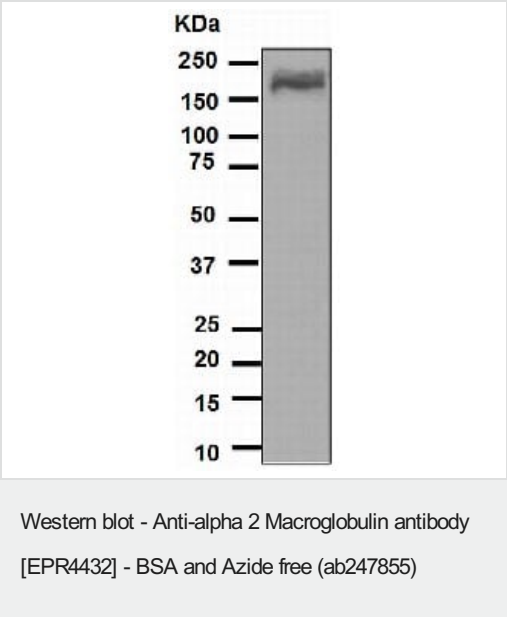
**The Abpromise guarantee** Our **Abpromise guarantee** covers the use of ab247855 in the following tested applications. The application notes include recommended starting dilutions; optimal dilutions/concentrations should be determined by the end user.

Application	Abreviews	Notes
<b>IHC-P</b>		Use at an assay dependent concentration. Perform heat mediated antigen retrieval with citrate buffer pH 6 before commencing with IHC staining protocol.
<b>WB</b>		Use at an assay dependent concentration. Predicted molecular weight: 163 kDa.

**Application notes** Is unsuitable for Flow Cyt, ICC/IF or IP.

## Target

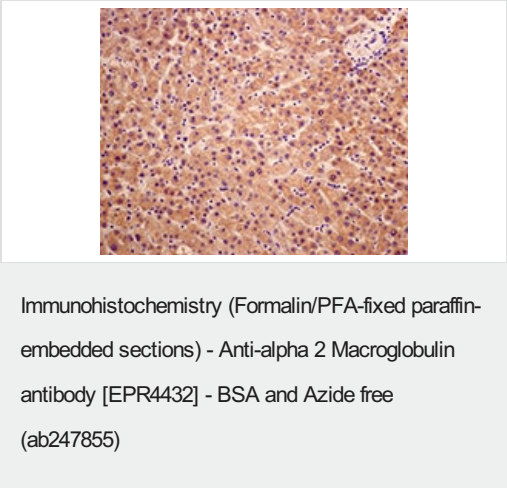
<b>Function</b>	Is able to inhibit all four classes of proteinases by a unique 'trapping' mechanism. This protein has a peptide stretch, called the 'bait region' which contains specific cleavage sites for different proteinases. When a proteinase cleaves the bait region, a conformational change is induced in the protein which traps the proteinase. The entrapped enzyme remains active against low molecular weight substrates (activity against high molecular weight substrates is greatly reduced). Following cleavage in the bait region a thioester bond is hydrolyzed and mediates the covalent binding of the protein to the proteinase.
<b>Tissue specificity</b>	Secreted in plasma.
<b>Sequence similarities</b>	Belongs to the protease inhibitor I39 (alpha-2-macroglobulin) family.
<b>Developmental stage</b>	Contrary to the rat protein, which is an acute phase protein, this protein is always present at high levels in circulation.
<b>Cellular localization</b>	Secreted.



Anti-alpha 2 Macroglobulin antibody [EPR4432] ([ab109422](#)) at 1/1000 dilution + Human plasma lysate at 10 µg

**Predicted band size:** 163 kDa

This data was developed using [ab109422](#), the same antibody clone in a different buffer formulation.



This data was developed using [ab109422](#), the same antibody clone in a different buffer formulation. [ab109422](#), at 1/500 dilution, staining alpha 2 Macroglobulin in paraffin-embedded Human liver by Immunohistochemistry. Perform heat mediated antigen retrieval with citrate buffer pH 6 before commencing with IHC staining protocol.

Why choose a recombinant antibody?

**Research with confidence**  
Consistent and reproducible results

**Long-term and scalable supply**  
Recombinant technology

**Success from the first experiment**  
Confirmed specificity

**Ethical standards compliant**  
Animal-free production

Anti-alpha 2 Macroglobulin antibody [EPR4432] - BSA and Azide free (ab247855)

**Please note:** All products are "FOR RESEARCH USE ONLY. NOT FOR USE IN DIAGNOSTIC PROCEDURES"

### **Our Abpromise to you: Quality guaranteed and expert technical support**

---

- Replacement or refund for products not performing as stated on the datasheet
- Valid for 12 months from date of delivery
- Response to your inquiry within 24 hours
  
- We provide support in Chinese, English, French, German, Japanese and Spanish
- Extensive multi-media technical resources to help you
- We investigate all quality concerns to ensure our products perform to the highest standards

If the product does not perform as described on this datasheet, we will offer a refund or replacement. For full details of the Abpromise, please visit <https://www.abcam.com/abpromise> or contact our technical team.

### **Terms and conditions**

---

- Guarantee only valid for products bought direct from Abcam or one of our authorized distributors