

Product datasheet

Anti-alpha Adducin (phospho S59) antibody [EP2175AY] ab76251

Recombinant RabMAb

[1 References](#) [2 Images](#)

Overview

Product name	Anti-alpha Adducin (phospho S59) antibody [EP2175AY]
Description	Rabbit monoclonal [EP2175AY] to alpha Adducin (phospho S59)
Host species	Rabbit
Tested applications	Suitable for: WB Unsuitable for: Flow Cyt, ICC/IF or IHC-P
Species reactivity	Reacts with: Human
Immunogen	Synthetic peptide. This information is proprietary to Abcam and/or its suppliers.
Positive control	HeLa cell lysates, untreated, or treated with calyculin A
General notes	<p>This product is a recombinant monoclonal antibody, which offers several advantages including:</p> <ul style="list-style-type: none">- High batch-to-batch consistency and reproducibility- Improved sensitivity and specificity- Long-term security of supply- Animal-free production <p>For more information see here.</p> <p>Our RabMAb[®] technology is a patented hybridoma-based technology for making rabbit monoclonal antibodies. For details on our patents, please refer to RabMAb[®] patents.</p> <p>Mouse, Rat: We have preliminary internal testing data to indicate this antibody may not react with these species. Please contact us for more information.</p>

Properties

Form	Liquid
Storage instructions	Shipped at 4°C. Store at -20°C. Stable for 12 months at -20°C.
Storage buffer	pH: 7.20 Preservative: 0.05% Sodium azide Constituents: 0.1% BSA, 40% Glycerol (glycerin, glycerine), 9.85% Tris glycine, 50% Tissue culture supernatant
Purity	Tissue culture supernatant

Clonality Monoclonal
Clone number EP2175AY
Isotype IgG

Applications

The Abpromise guarantee Our **Abpromise guarantee** covers the use of ab76251 in the following tested applications. The application notes include recommended starting dilutions; optimal dilutions/concentrations should be determined by the end user.

Application	Abreviews	Notes
WB		1/2000 - 1/5000. Predicted molecular weight: 81 kDa.

Application notes Is unsuitable for Flow Cyt, ICC/IF or IHC-P.

Target

Function Membrane-cytoskeleton-associated protein that promotes the assembly of the spectrin-actin network. Binds to calmodulin.

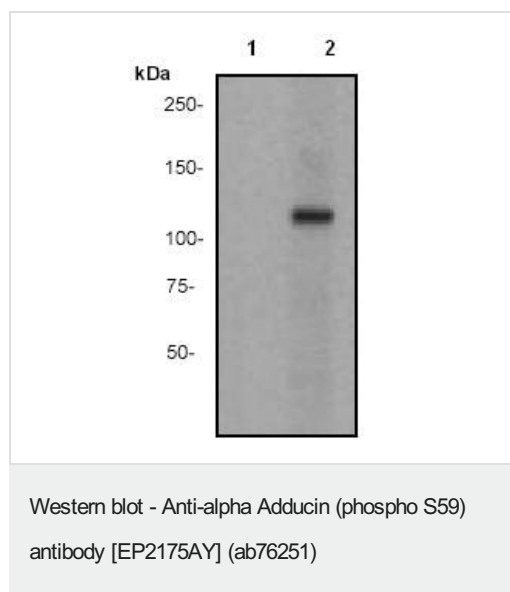
Tissue specificity Expressed in all tissues. Found in much higher levels in reticulocytes than the beta subunit.

Sequence similarities Belongs to the aldolase class II family. Adducin subfamily.

Domain Each subunit is comprised of three regions: a NH2-terminal protease-resistant globular head region, a short connecting subdomain, and a protease-sensitive tail region.

Cellular localization Cytoplasm > cytoskeleton. Cell membrane.

Images



All lanes : Anti-alpha Adducin (phospho S59) antibody [EP2175AY] (ab76251) at 1/10000 dilution

Lane 1 : HeLa cell lysate (untreated)

Lane 2 : HeLa cell lysate, treated with calyculin A

Lysates/proteins at 10 µg per lane.

Secondary

All lanes : goat anti-rabbit HRP labelled IgG at 1/1000 dilution

Predicted band size: 81 kDa

Observed band size: 115 kDa

Why choose a recombinant antibody?



Research with confidence
Consistent and reproducible results



Long-term and scalable supply
Recombinant technology



Success from the first experiment
Confirmed specificity



Ethical standards compliant
Animal-free production

Anti-alpha Adducin (phospho S59) antibody

[EP2175AY] (ab76251)

Please note: All products are "FOR RESEARCH USE ONLY. NOT FOR USE IN DIAGNOSTIC PROCEDURES"

Our Abpromise to you: Quality guaranteed and expert technical support

- Replacement or refund for products not performing as stated on the datasheet
- Valid for 12 months from date of delivery
- Response to your inquiry within 24 hours
- We provide support in Chinese, English, French, German, Japanese and Spanish
- Extensive multi-media technical resources to help you
- We investigate all quality concerns to ensure our products perform to the highest standards

If the product does not perform as described on this datasheet, we will offer a refund or replacement. For full details of the Abpromise, please visit <https://www.abcam.com/abpromise> or contact our technical team.

Terms and conditions

- Guarantee only valid for products bought direct from Abcam or one of our authorized distributors