

Anti-alpha Adducin (phospho S726) antibody ab53093

[2 References](#) [4 Images](#)

Overview

Product name	Anti-alpha Adducin (phospho S726) antibody
Description	Rabbit polyclonal to alpha Adducin (phospho S726)
Host species	Rabbit
Tested applications	Suitable for: WB, IHC-P, ICC/IF
Species reactivity	Reacts with: Human
Immunogen	Synthetic peptide corresponding to Human alpha Adducin aa 650-750 (phospho S726). Swiss-Prot #: P35611/P35612
Positive control	WB: HeLa cells. IHC-P: Human Brain and Human Breast carcinoma tissue. ICC/IF: HeLa cells.
General notes	<p>The Life Science industry has been in the grips of a reproducibility crisis for a number of years. Abcam is leading the way in addressing this with our range of recombinant monoclonal antibodies and knockout edited cell lines for gold-standard validation. Please check that this product meets your needs before purchasing.</p> <p>If you have any questions, special requirements or concerns, please send us an inquiry and/or contact our Support team ahead of purchase. Recommended alternatives for this product can be found below, along with publications, customer reviews and Q&As</p>

Properties

Form	Liquid
Storage instructions	Shipped at 4°C. Store at -20°C. Stable for 12 months at -20°C.
Storage buffer	<p>pH: 7.40</p> <p>Preservative: 0.02% Sodium azide</p> <p>Constituents: 50% Glycerol (glycerin, glycerine), 0.87% Sodium chloride, PBS</p> <p>Without Mg+2 and Ca+2</p>
Purity	Immunogen affinity purified
Purification notes	ab53093 was affinity purified from rabbit antiserum by affinity chromatography using epitope specific phosphopeptide. The antibody against non phosphopeptide was removed by chromatography using non phosphopeptide corresponding to the phosphorylation site.
Clonality	Polyclonal
Isotype	IgG

Applications

The Abpromise guarantee

Our **Abpromise guarantee** covers the use of ab53093 in the following tested applications.

The application notes include recommended starting dilutions; optimal dilutions/concentrations should be determined by the end user.

Application	Abreviews	Notes
WB		1/500 - 1/1000. Detects a band of approximately 81 kDa (predicted molecular weight: 81 kDa).
IHC-P		Use at an assay dependent concentration.
ICC/IF		1/100 - 1/500.

Target

Function

Membrane-cytoskeleton-associated protein that promotes the assembly of the spectrin-actin network. Binds to calmodulin.

Tissue specificity

Expressed in all tissues. Found in much higher levels in reticulocytes than the beta subunit.

Sequence similarities

Belongs to the aldolase class II family. Adducin subfamily.

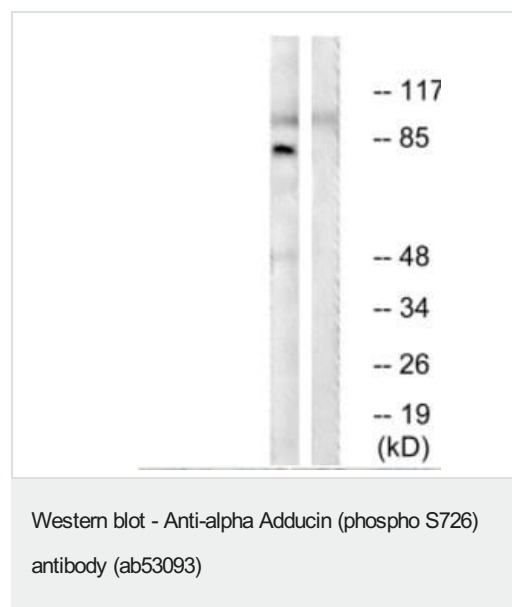
Domain

Each subunit is comprised of three regions: a NH2-terminal protease-resistant globular head region, a short connecting subdomain, and a protease-sensitive tail region.

Cellular localization

Cytoplasm > cytoskeleton. Cell membrane.

Images

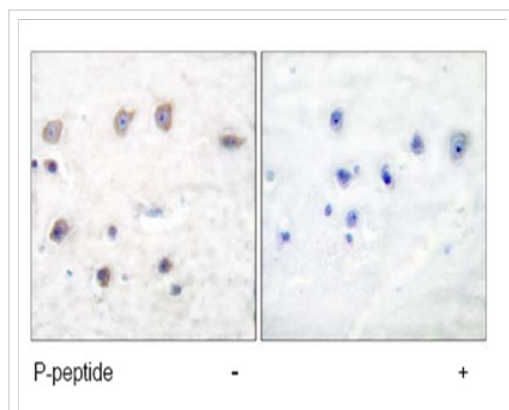


All lanes : Anti-alpha Adducin (phospho S726) antibody (ab53093) at 1/500 dilution

Lane 1 : HeLa cells treated with Forskolin (40nM 30 mins)

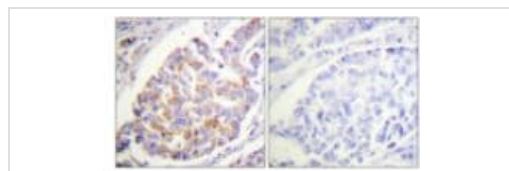
Lane 2 : HeLa cells treated with Forskolin (40nM 30 mins) and blocked with the phospho peptide.

Predicted band size: 81 kDa



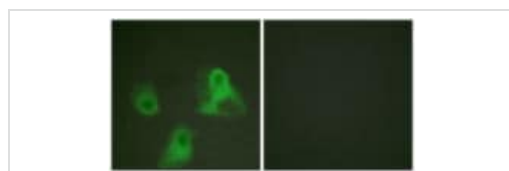
Immunohistochemistry (Formalin/PFA-fixed paraffin-embedded sections) - Anti-alpha Adducin (phospho S726) antibody (ab53093)

labelled with ab53093, at 1/50 dilution, staining alpha Adducin in paraffin embedded human brain tissue sections by Immunohistochemistry. Tissues had either been treated with (right image) or without (left image) the phosphopeptide.



Immunohistochemistry (Formalin/PFA-fixed paraffin-embedded sections) - Anti-alpha Adducin (phospho S726) antibody (ab53093)

Immunohistochemistry analysis of paraffin-embedded human breast carcinoma, using ab53093 at 1/50. The picture on the right is blocked with the phospo peptide.



Immunocytochemistry/ Immunofluorescence - Anti-alpha Adducin (phospho S726) antibody (ab53093)

Immunocytochemistry analysis of HeLa cells, using ab53093 at 1/100 dilution. The picture on the right is blocked with the phospho peptide.

Please note: All products are "FOR RESEARCH USE ONLY. NOT FOR USE IN DIAGNOSTIC PROCEDURES"

Our Abpromise to you: Quality guaranteed and expert technical support

- Replacement or refund for products not performing as stated on the datasheet
- Valid for 12 months from date of delivery
- Response to your inquiry within 24 hours
- We provide support in Chinese, English, French, German, Japanese and Spanish
- Extensive multi-media technical resources to help you

- We investigate all quality concerns to ensure our products perform to the highest standards

If the product does not perform as described on this datasheet, we will offer a refund or replacement. For full details of the Abpromise, please visit <https://www.abcam.com/abpromise> or contact our technical team.

Terms and conditions

- Guarantee only valid for products bought direct from Abcam or one of our authorized distributors