

# Anti-alpha Adducin (phospho S726) antibody [EP734Y] - BSA and Azide free ab284680

RabMAb

[4 Images](#)

### Overview

<b>Product name</b>	Anti-alpha Adducin (phospho S726) antibody [EP734Y] - BSA and Azide free
<b>Description</b>	Rabbit monoclonal [EP734Y] to alpha Adducin (phospho S726) - BSA and Azide free
<b>Host species</b>	Rabbit
<b>Tested applications</b>	<b>Suitable for:</b> ICC/IF, WB, IHC-P <b>Unsuitable for:</b> Flow Cyt or IP
<b>Species reactivity</b>	<b>Reacts with:</b> Human
<b>Immunogen</b>	Synthetic peptide. This information is proprietary to Abcam and/or its suppliers.
<b>Positive control</b>	WB: HeLa cell lysate. IHC-P: Human lung tissue. ICC/IF: HeLa cells.
<b>General notes</b>	<p>ab284680 is the carrier-free version of <a href="#">ab40760</a></p> <p>Our <b>carrier-free</b> antibodies are typically supplied in a PBS-only formulation, purified and free of BSA, sodium azide and glycerol. The carrier-free buffer and high concentration allow for increased conjugation efficiency.</p> <p>This conjugation-ready format is designed for use with fluorochromes, metal isotopes, oligonucleotides, and enzymes, which makes them ideal for antibody labelling, functional and cell-based assays, flow-based assays (e.g. mass cytometry) and Multiplex Imaging applications.</p> <p>Use our <b>conjugation kits</b> for antibody conjugates that are ready-to-use in as little as 20 minutes with &lt;1 minute hands-on-time and 100% antibody recovery: available for fluorescent dyes, HRP, biotin and gold.</p> <p>This product is compatible with the Maxpar<sup>®</sup> Antibody Labeling Kit from Fluidigm, without the need for antibody preparation. Maxpar<sup>®</sup> is a trademark of Fluidigm Canada Inc.</p> <p>This product is a recombinant monoclonal antibody, which offers several advantages including:</p> <ul style="list-style-type: none"><li>- High batch-to-batch consistency and reproducibility</li><li>- Improved sensitivity and specificity</li><li>- Long-term security of supply</li><li>- Animal-free production</li></ul> <p>For more information <a href="#">see here</a>.</p> <p>Our RabMAb<sup>®</sup> technology is a patented hybridoma-based technology for making rabbit monoclonal antibodies. For details on our patents, please refer to <a href="#">RabMAb<sup>®</sup> patents</a>.</p>

## Properties

---

<b>Form</b>	Liquid
<b>Storage instructions</b>	Shipped at 4°C. Store at +4°C.
<b>Storage buffer</b>	pH: 7.2 Constituent: 100% PBS
<b>Carrier free</b>	Yes
<b>Purity</b>	Tissue culture supernatant
<b>Clonality</b>	Monoclonal
<b>Clone number</b>	EP734Y
<b>Isotype</b>	IgG

## Applications

---

**The Abpromise guarantee** Our **Abpromise guarantee** covers the use of ab284680 in the following tested applications. The application notes include recommended starting dilutions; optimal dilutions/concentrations should be determined by the end user.

Application	Abreviews	Notes
ICC/IF		Use at an assay dependent concentration.
WB		Use at an assay dependent concentration. Predicted molecular weight: 81 kDa.
IHC-P		Use at an assay dependent concentration. Perform heat mediated antigen retrieval with citrate buffer pH 6 before commencing with IHC staining protocol.

**Application notes** Is unsuitable for Flow Cyt or IP.

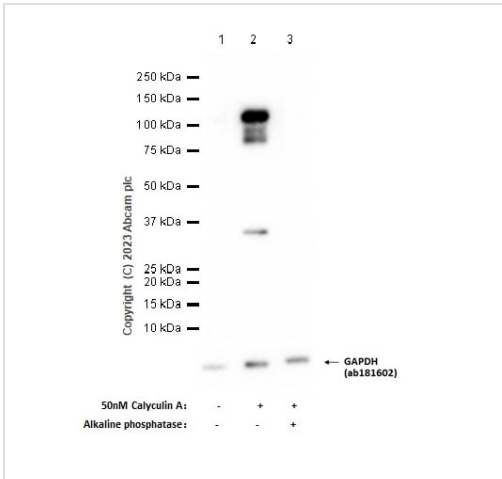
## Target

---

<b>Function</b>	Membrane-cytoskeleton-associated protein that promotes the assembly of the spectrin-actin network. Binds to calmodulin.
<b>Tissue specificity</b>	Expressed in all tissues. Found in much higher levels in reticulocytes than the beta subunit.
<b>Sequence similarities</b>	Belongs to the aldolase class II family. Adducin subfamily.
<b>Domain</b>	Each subunit is comprised of three regions: a NH <sub>2</sub> -terminal protease-resistant globular head region, a short connecting subdomain, and a protease-sensitive tail region.
<b>Cellular localization</b>	Cytoplasm > cytoskeleton. Cell membrane.

## Images

---



Western blot - Anti-alpha Adducin (phospho S726) antibody [EP734Y] - BSA and Azide free (ab284680)

**All lanes :** Anti-alpha Adducin (phospho S726) antibody [EP734Y] ([ab40760](#)) at 1/1000 dilution

**Lane 1 :** Untreated HeLa (Human cervix adenocarcinoma epithelial cell) whole cell lysate

**Lane 2 :** HeLa (Human cervix adenocarcinoma epithelial cell) treated with 50nM Calyculin A for 3 hours whole cell lysate

**Lane 3 :** HeLa (Human cervix adenocarcinoma epithelial cell) treated with 50nM Calyculin A for 3 hours whole cell lysate 20ug, then the membrane was treated with alkaline phosphatase for 1 hour

Lysates/proteins at 20 µg per lane.

### Secondary

**All lanes :** Goat Anti-Rabbit IgG H&L (HRP) ([ab97051](#)) at 1/20000 dilution

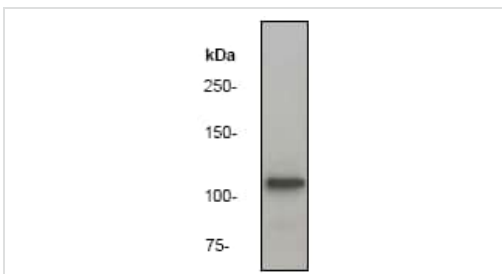
**Predicted band size:** 81 kDa

**Observed band size:** 110 kDa

**Exposure time:** 7 seconds

Blocking and diluting buffer: 5% NFDM/TBST

This data was developed using [ab40760](#), the same antibody clone in a different buffer formulation.



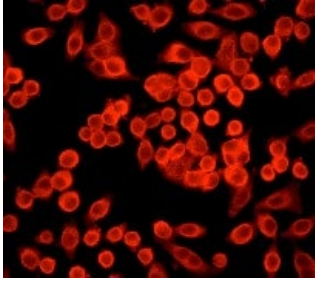
Western blot - Anti-alpha Adducin (phospho S726) antibody [EP734Y] - BSA and Azide free (ab284680)

Anti-alpha Adducin (phospho S726) antibody [EP734Y] ([ab40760](#)) at 1/50000 dilution + HeLa cell lysate at 10 µg

**Predicted band size:** 81 kDa

**Observed band size:** 120 kDa

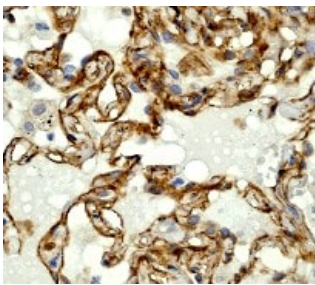
This data was developed using [ab40760](#), the same antibody clone in a different buffer formulation.



Immunocytochemistry/ Immunofluorescence - Anti-alpha Adducin (phospho S726) antibody [EP734Y] - BSA and Azide free (ab284680)

This data was developed using [ab40760](#), the same antibody clone in a different buffer formulation.

[ab40760](#), (1/250) staining HeLa cells by immunofluorescence.



Immunohistochemistry (Formalin/PFA-fixed paraffin-embedded sections) - Anti-alpha Adducin (phospho S726) antibody [EP734Y] - BSA and Azide free (ab284680)

This data was developed using [ab40760](#), the same antibody clone in a different buffer formulation.

[ab40760](#) (1/250), staining human lung by immunohistochemistry, paraffin embedded tissue.

Perform heat mediated antigen retrieval with citrate buffer pH 6 before commencing with IHC staining protocol.

**Please note:** All products are "FOR RESEARCH USE ONLY. NOT FOR USE IN DIAGNOSTIC PROCEDURES"

### Our Abpromise to you: Quality guaranteed and expert technical support

---

- Replacement or refund for products not performing as stated on the datasheet
- Valid for 12 months from date of delivery
- Response to your inquiry within 24 hours
- We provide support in Chinese, English, French, German, Japanese and Spanish
- Extensive multi-media technical resources to help you
- We investigate all quality concerns to ensure our products perform to the highest standards

If the product does not perform as described on this datasheet, we will offer a refund or replacement. For full details of the Abpromise, please visit <https://www.abcam.com/abpromise> or contact our technical team.

### Terms and conditions

---

- Guarantee only valid for products bought direct from Abcam or one of our authorized distributors