




Product datasheet

Anti-Alpha B Crystallin (phospho S45) antibody ab5598

[2 References](#) [1 Image](#)

Overview

Product name	Anti-Alpha B Crystallin (phospho S45) antibody
Description	Rabbit polyclonal to Alpha B Crystallin (phospho S45)
Host species	Rabbit
Tested applications	Suitable for: WB
Species reactivity	Reacts with: Recombinant fragment Predicted to work with: Sheep, Rabbit, Hamster, Pig, Cynomolgus monkey 
Immunogen	Synthetic peptide corresponding to Human Alpha B Crystallin aa 1-100 (phospho S45).  Run BLAST with  Run BLAST with
General notes	<p>The Life Science industry has been in the grips of a reproducibility crisis for a number of years. Abcam is leading the way in addressing this with our range of recombinant monoclonal antibodies and knockout edited cell lines for gold-standard validation. Please check that this product meets your needs before purchasing.</p> <p>If you have any questions, special requirements or concerns, please send us an inquiry and/or contact our Support team ahead of purchase. Recommended alternatives for this product can be found below, along with publications, customer reviews and Q&As</p>

Properties

Form	Liquid
Storage instructions	Shipped at 4°C. Store at +4°C short term (1-2 weeks). Upon delivery aliquot. Store at -20°C or -80°C. Avoid freeze / thaw cycle.
Storage buffer	Preservative: 0.05% Sodium azide Constituents: 96% PBS, 3% BSA
Purity	Immunogen affinity purified
Clonality	Polyclonal
Isotype	IgG

Applications

The Abpromise guarantee Our **Abpromise guarantee** covers the use of ab5598 in the following tested applications.

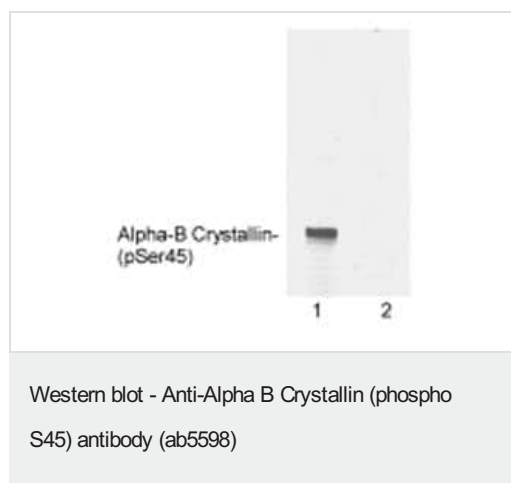
The application notes include recommended starting dilutions; optimal dilutions/concentrations should be determined by the end user.

Application	Abreviews	Notes
WB		Use a concentration of 0.5 µg/ml. Detects a band of approximately 20 kDa.

Target

Function	May contribute to the transparency and refractive index of the lens.
Tissue specificity	Lens as well as other tissues.
Involvement in disease	Defects in CRYAB are the cause of myofibrillar alpha-B crystallin-related (MFM-CRYAB) [MIM:608810]. A neuromuscular disorder that results in weakness of the proximal and distal limb muscles, weakness of the neck, velopharynx and trunk muscles, hypertrophic cardiomyopathy, and cataract in a subset of patients.
Sequence similarities	Belongs to the small heat shock protein (HSP20) family.
Cellular localization	Cytoplasm. Nucleus. Translocates to the nucleus during heat shock and resides in sub-nuclear structures known as SC35 speckles or nuclear splicing speckles.

Images



Western blot of recombinant bovine phospho-alpha-B crystallin (Ser45) using ab5598. Lane 1 is phospho-alpha-B crystallin (Ser45) and lane 2 is unphosphorylated alpha-B crystallin.

Please note: All products are "FOR RESEARCH USE ONLY. NOT FOR USE IN DIAGNOSTIC PROCEDURES"

Our Abpromise to you: Quality guaranteed and expert technical support

- Replacement or refund for products not performing as stated on the datasheet
- Valid for 12 months from date of delivery
- Response to your inquiry within 24 hours
- We provide support in Chinese, English, French, German, Japanese and Spanish
- Extensive multi-media technical resources to help you
- We investigate all quality concerns to ensure our products perform to the highest standards

If the product does not perform as described on this datasheet, we will offer a refund or replacement. For full details of the Abpromise, please visit <https://www.abcam.com/abpromise> or contact our technical team.

Terms and conditions

- Guarantee only valid for products bought direct from Abcam or one of our authorized distributors