


Anti-alpha Internexin antibody ab7259

★ ★ ★ ★ ★ [2 Abreviews](#) [7 References](#) [5 Images](#)

Overview

Product name	Anti-alpha Internexin antibody
Description	Rabbit polyclonal to alpha Internexin
Host species	Rabbit
Specificity	Specifically recognizes a-internexin.
Tested applications	Suitable for: WB, IHC-FoFr, IHC-P, ICC/IF
Species reactivity	Reacts with: Mouse, Rat, Cow, Human Predicted to work with: Mammals 
Immunogen	Recombinant full length protein (Rat)
General notes	<p>The Life Science industry has been in the grips of a reproducibility crisis for a number of years. Abcam is leading the way in addressing this with our range of recombinant monoclonal antibodies and knockout edited cell lines for gold-standard validation. Please check that this product meets your needs before purchasing.</p> <p>If you have any questions, special requirements or concerns, please send us an inquiry and/or contact our Support team ahead of purchase. Recommended alternatives for this product can be found below, along with publications, customer reviews and Q&As</p>

Properties

Form	Liquid
Storage instructions	Shipped at 4°C. Store at +4°C short term (1-2 weeks). Upon delivery aliquot. Store at -20°C or -80°C. Avoid freeze / thaw cycle.
Storage buffer	pH: 7.60 Preservatives: 0.01% Thimerosal (merthiolate), 0.05% Sodium azide Constituents: 0.164% Sodium phosphate, 1.45% Sodium chloride, 1.5% BSA
Purity	Whole antiserum
Clonality	Polyclonal
Isotype	IgG

Applications

The Abpromise guarantee

Our **Abpromise guarantee** covers the use of ab7259 in the following tested applications.

The application notes include recommended starting dilutions; optimal dilutions/concentrations should be determined by the end user.

Application	Abreviews	Notes
WB	★★★★★ (1)	1/10000 - 1/20000. Predicted molecular weight: 66 kDa.
IHC-FoFr		1/500 - 1/1000.
IHC-P		1/2000.
ICC/IF		1/500 - 1/1000.

Target

Function

Class-IV neuronal intermediate filament that is able to self-assemble. It is involved in the morphogenesis of neurons. It may form an independent structural network without the involvement of other neurofilaments or it may cooperate with NF-L to form the filamentous backbone to which NF-M and NF-H attach to form the cross-bridges.

Tissue specificity

Found predominantly in adult CNS.

Sequence similarities

Belongs to the intermediate filament family.

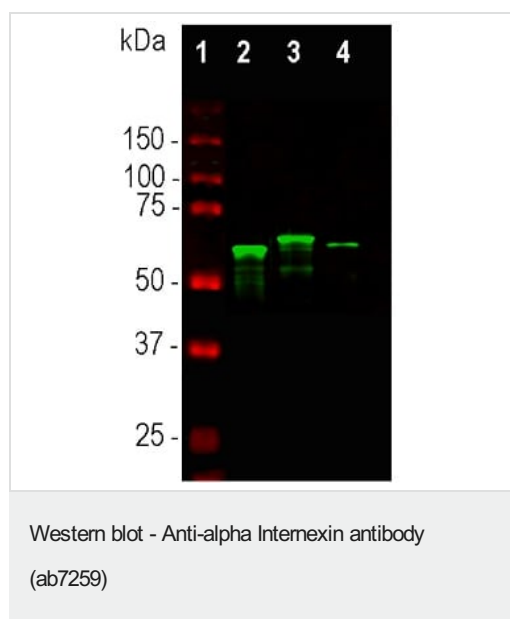
Developmental stage

Expressed in brain as early as the 16th week of gestation, and increased rapidly and reached a steady state level by the 18th week of gestation.

Post-translational modifications

O-glycosylated.
Phosphorylated upon DNA damage, probably by ATM or ATR.

Images



All lanes : Anti-alpha Internexin antibody (ab7259) at 1/10000 dilution

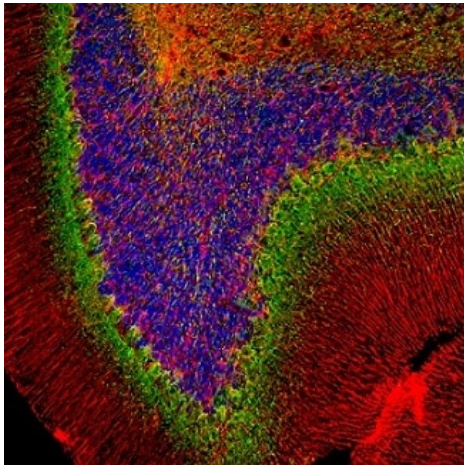
Lane 1 : Protein standard

Lane 2 : Mouse spinal cord lysate

Lane 3 : Rat spinal cord lysate

Lane 4 : Cow spinal cord lysate

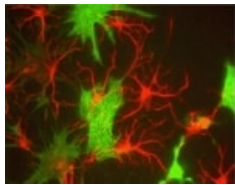
Predicted band size: 66 kDa



Immunohistochemistry (PFA perfusion fixed frozen sections) - Anti-alpha Internexin antibody (ab7259)

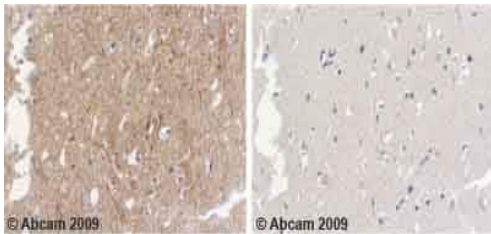
Immunofluorescence analysis of rat cerebellum section stained for alpha Internexin using ab7259 at a 1/2000 dilution (green) co-stained with chicken polyclonal antibody to GFAP at a 1/5000 dilution (red). DAPI was used to stain nuclear DNA (blue).

Following transcardial perfusion with 4% paraformaldehyde, brain was post-fixed for 24 hours, cut to 45 μ M, and free-floating sections were stained.



Immunocytochemistry/ Immunofluorescence - Anti-alpha Internexin antibody (ab7259)

Ab7259 shows red, neuronal progenitor cells, plectin (not one of our antibodies) shows fibroblast marker. Photo courtesy of: Dr. Gerry Shaw University of Florida

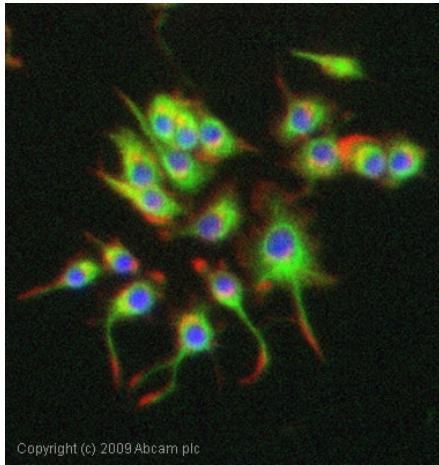


Immunohistochemistry (Formalin/PFA-fixed paraffin-embedded sections) - Anti-alpha Internexin antibody (ab7259)

Ab7259 staining Human normal temporal cortex. Staining is localised to intracellular compartment.

Left panel: with primary antibody diluted 1:2000. Right panel: isotype control.

Sections were stained using an automated system DAKO Autostainer Plus, at room temperature: sections were rehydrated and antigen retrieved with the Dako 3 in 1 AR buffer citrate pH6.1 in a DAKO PT Link. Slides were peroxidase blocked in 3% H₂O₂ in methanol for 10 mins. They were then blocked with Dako Protein block for 10 minutes (containing casein 0.25% in PBS) then incubated with primary antibody for 20 min and detected with Dako envision flex amplification kit for 30 minutes. Colorimetric detection was completed with Diaminobenzidine for 5 minutes. Slides were counterstained with Haematoxylin and coverslipped under DePeX. Please note that for manual staining we recommend to optimize the primary antibody concentration and incubation time (overnight incubation), and amplification may be required.



ICC/IF image of ab7259 stained PC12 cells. The cells were 100% methanol fixed (5 min) and then incubated in 1%BSA / 10% normal goat serum / 0.3M glycine in 0.1% PBS-Tween for 1h to permeabilise the cells and block non-specific protein-protein interactions. The cells were then incubated with the antibody (ab7259, 1/1000 dilution) overnight at +4°C. The secondary antibody (green) was Alexa Fluor® 488 goat anti-rabbit IgG (H+L) used at a 1/1000 dilution for 1h. Alexa Fluor® 594 WGA was used to label plasma membranes (red) at a 1/200 dilution for 1h. DAPI was used to stain the cell nuclei (blue) at a concentration of 1.43µM.

Immunocytochemistry/ Immunofluorescence - Anti-alpha Intemexin antibody (ab7259)

Please note: All products are "FOR RESEARCH USE ONLY. NOT FOR USE IN DIAGNOSTIC PROCEDURES"

Our Abpromise to you: Quality guaranteed and expert technical support

- Replacement or refund for products not performing as stated on the datasheet
- Valid for 12 months from date of delivery
- Response to your inquiry within 24 hours
- We provide support in Chinese, English, French, German, Japanese and Spanish
- Extensive multi-media technical resources to help you
- We investigate all quality concerns to ensure our products perform to the highest standards

If the product does not perform as described on this datasheet, we will offer a refund or replacement. For full details of the Abpromise, please visit <https://www.abcam.com/abpromise> or contact our technical team.

Terms and conditions

- Guarantee only valid for products bought direct from Abcam or one of our authorized distributors