

Product datasheet

Anti-AMBN antibody [EPR8317] ab155950

Recombinant **RabMAb**

2 Images

Overview

Product name	Anti-AMBN antibody [EPR8317]
Description	Rabbit monoclonal [EPR8317] to AMBN
Host species	Rabbit
Tested applications	Suitable for: WB Unsuitable for: IHC-P or IP
Species reactivity	Reacts with: Human
Immunogen	Synthetic peptide. This information is proprietary to Abcam and/or its suppliers.
Positive control	WB: Recombinant AMBN protein
General notes	<p>This product is a recombinant monoclonal antibody, which offers several advantages including:</p> <ul style="list-style-type: none"> - High batch-to-batch consistency and reproducibility - Improved sensitivity and specificity - Long-term security of supply - Animal-free production <p>For more information see here.</p> <p>Our RabMAb[®] technology is a patented hybridoma-based technology for making rabbit monoclonal antibodies. For details on our patents, please refer to RabMAb[®] patents.</p> <p>Mouse, Rat: We have preliminary internal testing data to indicate this antibody may not react with these species. Please contact us for more information.</p>

Properties

Form	Liquid
Storage instructions	Shipped at 4°C. Store at -20°C.
Storage buffer	<p>pH: 7.2</p> <p>Preservative: 0.01% Sodium azide</p> <p>Constituents: 9% PBS, 40% Glycerol (glycerin, glycerine), 0.05% BSA, 50% Tissue culture supernatant</p>
Purity	Protein A purified
Clonality	Monoclonal

Clone number EPR8317

Isotype IgG

Applications

The Abpromise guarantee Our **Abpromise guarantee** covers the use of ab155950 in the following tested applications. The application notes include recommended starting dilutions; optimal dilutions/concentrations should be determined by the end user.

Application	Abreviews	Notes
WB		1/1000 - 1/10000. Predicted molecular weight: 48 kDa.

Application notes Is unsuitable for IHC-P or IP.

Target

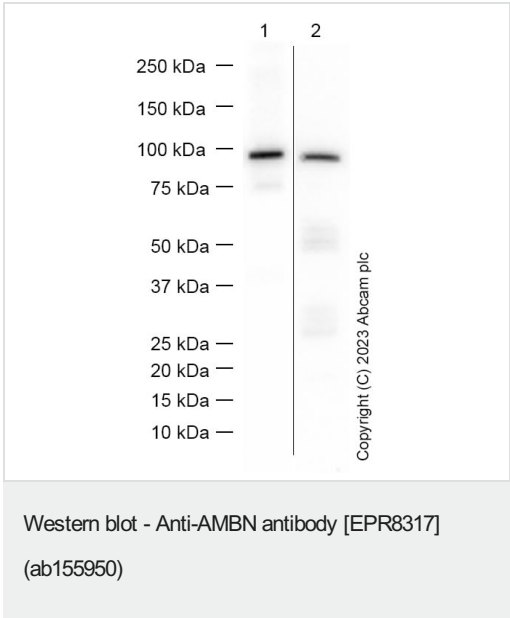
Function Involved in the mineralization and structural organization of enamel.

Tissue specificity Ameloblast-specific. Located at the Tomes processes of secretory ameloblasts and in the sheath space between rod-interrod enamel.

Sequence similarities Belongs to the ameloblastin family.

Cellular localization Secreted > extracellular space > extracellular matrix.

Images



Lane 1 : Anti-AMBN antibody [EPR8317] (ab155950) at 1/1000 dilution

Lane 2 : Anti-GST antibody [EPR4236] (**ab111947**) at 1/1000 dilution

All lanes : Recombinant AMBN protein

Secondary

All lanes : Goat Anti-Rabbit IgG (HRP) with minimal cross-reactivity with human IgG at 1/2000 dilution

Predicted band size: 48 kDa

Observed band size: 100 kDa





Blocking and diluting buffer and concentration: 5% NFDM /TBST.

Exposure time: Lane 1: 1 second. Lane 2: 20 seconds.

AMBN will migrate to higher MW size (PMID: 23782691), the MW is

consistent with literature (PMID: 26070558).

Why choose a recombinant antibody?

 <p>Research with confidence Consistent and reproducible results</p>	 <p>Long-term and scalable supply Recombinant technology</p>
 <p>Success from the first experiment Confirmed specificity</p>	 <p>Ethical standards compliant Animal-free production</p>

Anti-AMBN antibody [EPR8317] (ab155950)

Please note: All products are "FOR RESEARCH USE ONLY. NOT FOR USE IN DIAGNOSTIC PROCEDURES"

Our Abpromise to you: Quality guaranteed and expert technical support

- Replacement or refund for products not performing as stated on the datasheet
- Valid for 12 months from date of delivery
- Response to your inquiry within 24 hours
- We provide support in Chinese, English, French, German, Japanese and Spanish
- Extensive multi-media technical resources to help you
- We investigate all quality concerns to ensure our products perform to the highest standards

If the product does not perform as described on this datasheet, we will offer a refund or replacement. For full details of the Abpromise, please visit <https://www.abcam.com/abpromise> or contact our technical team.

Terms and conditions

- Guarantee only valid for products bought direct from Abcam or one of our authorized distributors