

## Product datasheet

# Anti-AMBRA1 antibody ab69501

★★★★☆ [1 Abreviews](#) [2 References](#) [1 Image](#)

### Overview

---

<b>Product name</b>	Anti-AMBRA1 antibody
<b>Description</b>	Rabbit polyclonal to AMBRA1
<b>Host species</b>	Rabbit
<b>Tested applications</b>	<b>Suitable for:</b> ICC/IF, IHC-P, WB
<b>Species reactivity</b>	<b>Reacts with:</b> Mouse, Rat, Human
<b>Immunogen</b>	Synthetic peptide corresponding to Human AMBRA1 (C terminal). AMBRA1 antibody was raised against a 15 amino acid synthetic peptide from near the carboxy terminus of human AMBRA1 . Database link: <a href="#">Q9C0C7</a>
<b>Positive control</b>	WB: NIH/3T3 cell lysate.
<b>General notes</b>	<p>The Life Science industry has been in the grips of a reproducibility crisis for a number of years. Abcam is leading the way in addressing this with our range of recombinant monoclonal antibodies and knockout edited cell lines for gold-standard validation. Please check that this product meets your needs before purchasing.</p> <p>If you have any questions, special requirements or concerns, please send us an inquiry and/or contact our Support team ahead of purchase. Recommended alternatives for this product can be found below, along with publications, customer reviews and Q&amp;As</p>

### Properties

---

<b>Form</b>	Liquid
<b>Storage instructions</b>	Shipped at 4°C. Store at +4°C short term (1-2 weeks). Upon delivery aliquot. Store at -20°C long term. Avoid freeze / thaw cycle.
<b>Storage buffer</b>	pH: 7.2 Preservative: 0.02% Sodium azide Constituent: PBS
<b>Purity</b>	Immunogen affinity purified
<b>Clonality</b>	Polyclonal
<b>Isotype</b>	IgG

### Applications

---

## The Abpromise guarantee

Our **Abpromise guarantee** covers the use of ab69501 in the following tested applications.

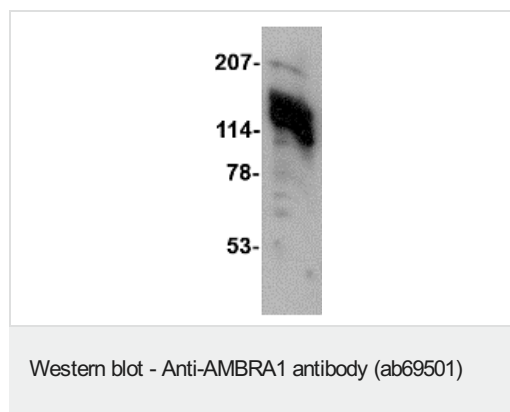
The application notes include recommended starting dilutions; optimal dilutions/concentrations should be determined by the end user.

Application	Abreviews	Notes
ICC/IF		Use at an assay dependent concentration.
IHC-P		Use at an assay dependent concentration.
WB	★★★★★ (1)	Use a concentration of 1 - 2 µg/ml. Detects a band of approximately 143 kDa (predicted molecular weight: 143 kDa).

## Target

<b>Function</b>	Regulates autophagy and development of the nervous system. Involved in autophagy in controlling protein turnover during neuronal development, and in regulating normal cell survival and proliferation.
<b>Sequence similarities</b>	Contains 3 WD repeats.
<b>Cellular localization</b>	Cytoplasmic vesicle > autophagosome.

## Images



Anti-AMBRA1 antibody (ab69501) at 1 µg/ml + NIH/3T3 (Mouse embryonic fibroblast cell line) cell lysate at 15 µg

### Secondary

Anti-rabbit

**Predicted band size:** 143 kDa

**Observed band size:** 143 kDa

**Please note:** All products are "FOR RESEARCH USE ONLY. NOT FOR USE IN DIAGNOSTIC PROCEDURES"

## Our Abpromise to you: Quality guaranteed and expert technical support

- Replacement or refund for products not performing as stated on the datasheet
- Valid for 12 months from date of delivery
- Response to your inquiry within 24 hours
- We provide support in Chinese, English, French, German, Japanese and Spanish
- Extensive multi-media technical resources to help you
- We investigate all quality concerns to ensure our products perform to the highest standards

If the product does not perform as described on this datasheet, we will offer a refund or replacement. For full details of the Abpromise,

please visit <https://www.abcam.com/abpromise> or contact our technical team.

### **Terms and conditions**

---

- Guarantee only valid for products bought direct from Abcam or one of our authorized distributors