


Product datasheet

Anti-AMF antibody ab227472

3 Images

Overview

Product name	Anti-AMF antibody
Description	Rabbit polyclonal to AMF
Host species	Rabbit
Tested applications	Suitable for: WB, IHC-P, ICC/IF
Species reactivity	Reacts with: Human Predicted to work with: Rabbit, Cow, Pig, Chimpanzee 
Immunogen	Recombinant fragment within Human AMF (internal sequence). The exact sequence is proprietary. Database link: P06744
Positive control	WB: Raji and NCI-H1299 whole cell lysate. IHC-P: NCI-N87 xenograft tissue. ICC/IF: HepG2 cells.
General notes	<p>The Life Science industry has been in the grips of a reproducibility crisis for a number of years. Abcam is leading the way in addressing this with our range of recombinant monoclonal antibodies and knockout edited cell lines for gold-standard validation. Please check that this product meets your needs before purchasing.</p> <p>If you have any questions, special requirements or concerns, please send us an inquiry and/or contact our Support team ahead of purchase. Recommended alternatives for this product can be found below, along with publications, customer reviews and Q&As</p>

Properties

Storage instructions	Shipped at 4°C. Store at +4°C short term (1-2 weeks). Upon delivery aliquot. Store at -20°C long term. Avoid freeze / thaw cycle.
Storage buffer	pH: 7.00 Preservative: 0.01% Thimerosal (merthiolate) Constituents: 1.21% Tris, 0.75% Glycine, 10% Glycerol (glycerin, glycerine)
Purity	Immunogen affinity purified
Clonality	Polyclonal
Isotype	IgG

Applications

The Abpromise guarantee

Our **Abpromise guarantee** covers the use of ab227472 in the following tested applications.

The application notes include recommended starting dilutions; optimal dilutions/concentrations should be determined by the end user.

Application	Abreviews	Notes
WB		1/5000 - 1/20000. Predicted molecular weight: 63 kDa.
IHC-P		1/100 - 1/1000.
ICC/IF		1/100 - 1/1000.

Target

Function

Besides it's role as a glycolytic enzyme, mammalian GPI can function as a tumor-secreted cytokine and an angiogenic factor (AMF) that stimulates endothelial cell motility. GPI is also a neurotrophic factor (Neuroleukin) for spinal and sensory neurons.

Pathway

Carbohydrate degradation; glycolysis; D-glyceraldehyde 3-phosphate and glycerone phosphate from D-glucose: step 2/4.

Involvement in disease

Defects in GPI are the cause of hemolytic anemia non-spherocytic due to glucose phosphate isomerase deficiency (HA-GPID) [MIM:613470]. It is a form of anemia in which there is no abnormal hemoglobin or spherocytosis. It is caused by glucose phosphate isomerase deficiency. Severe GPI deficiency can be associated with hydrops fetalis, immediate neonatal death and neurological impairment.

Sequence similarities

Belongs to the GPI family.

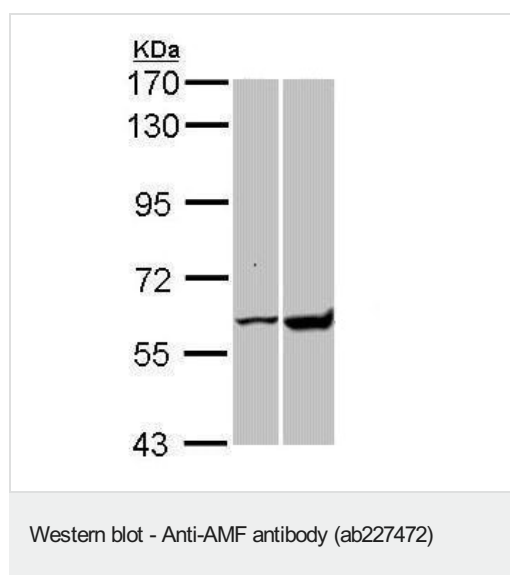
Post-translational modifications

Phosphorylation at Ser-185 by CK2 has been shown to decrease enzymatic activity and may contribute to secretion by a non-classical secretory pathway.
ISGylated.

Cellular localization

Cytoplasm. Secreted.

Images



All lanes : Anti-AMF antibody (ab227472) at 1/10000 dilution

Lane 1 : NCI-H1299 (human lung carcinoma cell line) whole cell lysate

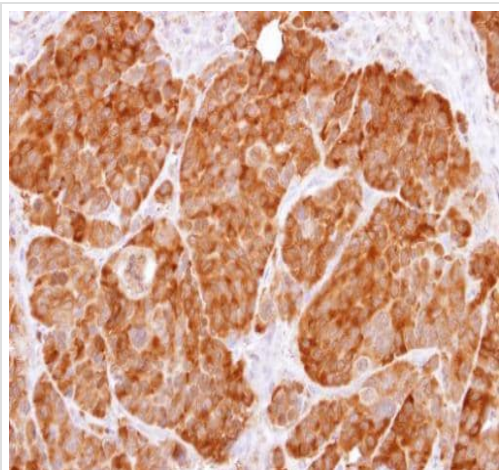
Lane 2 : Raji (human Burkitt's lymphoma cell line) whole cell lysate

Lysates/proteins at 30 µg per lane.

Developed using the ECL technique.

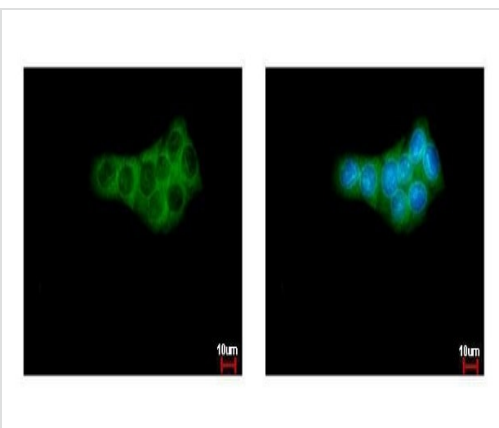
Predicted band size: 63 kDa

7.5% SDS-PAGE



Immunohistochemistry (Formalin/PFA-fixed paraffin-embedded sections) - Anti-AMF antibody (ab227472)

Paraffin-embedded NCI-N87 xenograft tissue stained for AFM with ab227472 at 1/500 dilution in immunohistochemical analysis.



Immunocytochemistry/ Immunofluorescence - Anti-AMF antibody (ab227472)

HepG2 (human liver hepatocellular carcinoma cell line) cells stained for AFM (green) using ab227472 at 1/500 dilution in ICC/IF. Cells were fixed in ice-cold methanol for 5 minutes.

Blue: Hoechst 33342 staining.

Please note: All products are "FOR RESEARCH USE ONLY. NOT FOR USE IN DIAGNOSTIC PROCEDURES"

Our Abpromise to you: Quality guaranteed and expert technical support

- Replacement or refund for products not performing as stated on the datasheet
- Valid for 12 months from date of delivery
- Response to your inquiry within 24 hours
- We provide support in Chinese, English, French, German, Japanese and Spanish
- Extensive multi-media technical resources to help you
- We investigate all quality concerns to ensure our products perform to the highest standards

If the product does not perform as described on this datasheet, we will offer a refund or replacement. For full details of the Abpromise,

please visit <https://www.abcam.com/abpromise> or contact our technical team.

Terms and conditions

- Guarantee only valid for products bought direct from Abcam or one of our authorized distributors