


Product datasheet

Anti-Amino-terminal enhancer of split/AES antibody ab118881

[2 Images](#)

Overview

Product name	Anti-Amino-terminal enhancer of split/AES antibody
Description	Rabbit polyclonal to Amino-terminal enhancer of split/AES
Host species	Rabbit
Tested applications	Suitable for: WB, IHC-P
Species reactivity	Reacts with: Human Predicted to work with: Mouse, Rat 
Immunogen	Synthetic peptide corresponding to Human Amino-terminal enhancer of split/AES (C terminal) conjugated to keyhole limpet haemocyanin.
Positive control	IHC-P: Human skeletal muscle. WB: HEK-293 cell lysate.
General notes	<p>The Life Science industry has been in the grips of a reproducibility crisis for a number of years. Abcam is leading the way in addressing this with our range of recombinant monoclonal antibodies and knockout edited cell lines for gold-standard validation. Please check that this product meets your needs before purchasing.</p> <p>If you have any questions, special requirements or concerns, please send us an inquiry and/or contact our Support team ahead of purchase. Recommended alternatives for this product can be found below, along with publications, customer reviews and Q&As</p>

Properties

Form	Liquid
Storage instructions	Shipped at 4°C. Upon delivery aliquot and store at -20°C. Avoid repeated freeze / thaw cycles.
Storage buffer	pH: 7.4 Preservative: 0.02% Sodium azide Constituent: 99% PBS
Purity	Immunogen affinity purified
Clonality	Polyclonal
Isotype	IgG

Applications

The Abpromise guarantee

Our **Abpromise guarantee** covers the use of ab118881 in the following tested applications.

The application notes include recommended starting dilutions; optimal dilutions/concentrations should be determined by the end user.

Application	Abreviews	Notes
WB		Use a concentration of 1 - 2 µg/ml. Predicted molecular weight: 21 kDa.
IHC-P		Use a concentration of 2.5 µg/ml. Perform heat mediated antigen retrieval with citrate buffer pH 6 before commencing with IHC staining protocol.

Target

Function

Transcriptional corepressor. Acts as dominant repressor towards other family members. Inhibits NF-kappa-B-regulated gene expression. May be required for the initiation and maintenance of the differentiated state. Essential for the transcriptional repressor activity of SIX3 during retina and lens development.

Tissue specificity

Found predominantly in muscle, heart and Placenta. In fetal tissues, abundantly expressed in the heart, lung, kidney, brain and liver.

Sequence similarities

Belongs to the WD repeat Groucho/TLE family.

Domain

Lacks the C-terminal WD repeats.

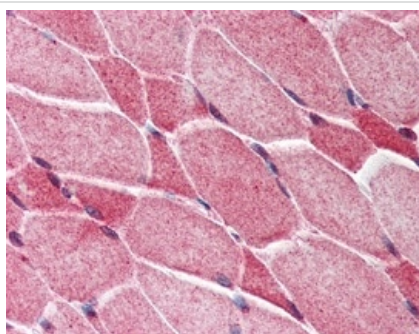
Post-translational modifications

Ubiquitinated by XIAP/BIRC4.

Cellular localization

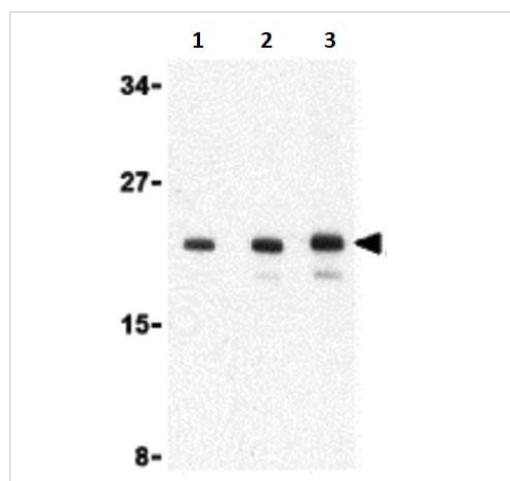
Nucleus.

Images



Human skeletal muscle (formalin fixed, paraffin embedded) stained with ab118881 at 2.5 µg/ml, followed by biotinylated goat anti-rabbit IgG secondary antibody, alkaline phosphatase-streptavidin and chromogen.

Immunohistochemistry (Formalin/PFA-fixed paraffin-embedded sections) - Anti-Amino-terminal enhancer of split/AES antibody (ab118881)



Western blot - Anti-Amino-terminal enhancer of split/AES antibody (ab118881)

Lane 1 : Anti-Amino-terminal enhancer of split/AES antibody (ab118881) at 1 µg/ml

Lane 2 : Anti-Amino-terminal enhancer of split/AES antibody (ab118881) at 2 µg/ml

Lane 3 : Anti-Amino-terminal enhancer of split/AES antibody (ab118881) at 4 µg/ml

All lanes : HEK-293 (human epithelial cell line from embryonic kidney) cell lysate

Predicted band size: 21 kDa

Please note: All products are "FOR RESEARCH USE ONLY. NOT FOR USE IN DIAGNOSTIC PROCEDURES"

Our Abpromise to you: Quality guaranteed and expert technical support

- Replacement or refund for products not performing as stated on the datasheet
- Valid for 12 months from date of delivery
- Response to your inquiry within 24 hours
- We provide support in Chinese, English, French, German, Japanese and Spanish
- Extensive multi-media technical resources to help you
- We investigate all quality concerns to ensure our products perform to the highest standards

If the product does not perform as described on this datasheet, we will offer a refund or replacement. For full details of the Abpromise, please visit <https://www.abcam.com/abpromise> or contact our technical team.

Terms and conditions

- Guarantee only valid for products bought direct from Abcam or one of our authorized distributors