


Product datasheet

Anti-Amino-terminal enhancer of split/AES antibody [EPR8385] ab137060

KO VALIDATED Recombinant RabMAB

[1 References](#) [4 Images](#)

Overview

Product name	Anti-Amino-terminal enhancer of split/AES antibody [EPR8385]
Description	Rabbit monoclonal [EPR8385] to Amino-terminal enhancer of split/AES
Host species	Rabbit
Tested applications	Suitable for: WB, ICC/IF Unsuitable for: Flow Cyt or IHC-P
Species reactivity	Reacts with: Human Predicted to work with: Mouse, Rat 
Immunogen	Synthetic peptide. This information is proprietary to Abcam and/or its suppliers.
Positive control	WB: HCT116, 293T, HeLa, PC3 and Jurkat cell lysates. ICC: HeLa cells.
General notes	This product is a recombinant monoclonal antibody, which offers several advantages including: <ul style="list-style-type: none"> - High batch-to-batch consistency and reproducibility - Improved sensitivity and specificity - Long-term security of supply - Animal-free production For more information see here . Our RabMAB [®] technology is a patented hybridoma-based technology for making rabbit monoclonal antibodies. For details on our patents, please refer to RabMAB[®] patents .

Properties

Form	Liquid
Storage instructions	Shipped at 4°C. Store at -20°C.
Storage buffer	pH: 7.2 Preservative: 0.01% Sodium azide Constituents: 9% PBS, 40% Glycerol (glycerin, glycerine), 0.05% BSA, 50% Tissue culture supernatant
Purity	Tissue culture supernatant
Clonality	Monoclonal

Clone number EPR8385

Isotype IgG

Applications

The Abpromise guarantee Our **Abpromise guarantee** covers the use of ab137060 in the following tested applications.

The application notes include recommended starting dilutions; optimal dilutions/concentrations should be determined by the end user.

Application	Abreviews	Notes
WB		1/1000 - 1/10000. Predicted molecular weight: 21 kDa.
ICC/IF		1/250 - 1/500.

Application notes Is unsuitable for Flow Cyt or IHC-P.

Target

Function Transcriptional corepressor. Acts as dominant repressor towards other family members. Inhibits NF-kappa-B-regulated gene expression. May be required for the initiation and maintenance of the differentiated state. Essential for the transcriptional repressor activity of SIX3 during retina and lens development.

Tissue specificity Found predominantly in muscle, heart and Placenta. In fetal tissues, abundantly expressed in the heart, lung, kidney, brain and liver.

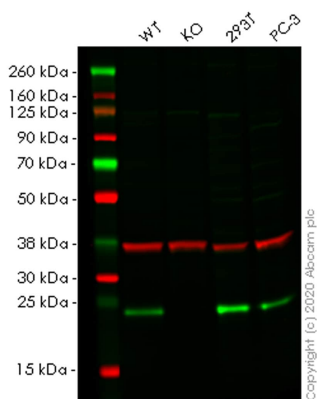
Sequence similarities Belongs to the WD repeat Groucho/TLE family.

Domain Lacks the C-terminal WD repeats.

Post-translational modifications Ubiquitinated by XIAP/BIRC4.

Cellular localization Nucleus.

Images



Western blot - Anti-Amino-terminal enhancer of split/AES antibody [EPR8385] (ab137060)

All lanes : Anti-Amino-terminal enhancer of split/AES antibody [EPR8385] (ab137060) at 1/1000 dilution

Lane 1 : Wild-type HCT 116 (Human colorectal carcinoma cell line) whole cell lysate

Lane 2 : AES knockout HCT 116 (Human colorectal carcinoma cell line) whole cell lysate

Lane 3 : HEK-293T (Human epithelial cell line from embryonic kidney transformed with large T antigen) whole cell lysate

Lane 4 : PC3 (Human prostate adenocarcinoma cell line) whole cell lysate

Lysates/proteins at 20 µg per lane.

Secondary

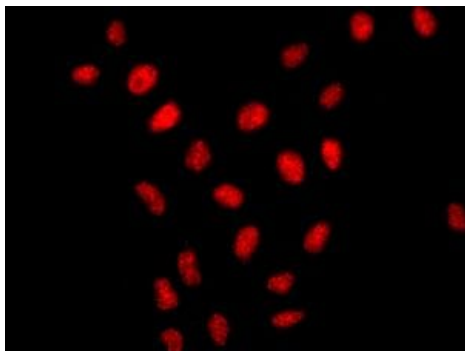
All lanes : Goat anti-Rabbit IgG H&L (IRDye® 800CW) preadsorbed (**ab216773**) at 1/10000 dilution

Predicted band size: 21 kDa

Observed band size: 21 kDa

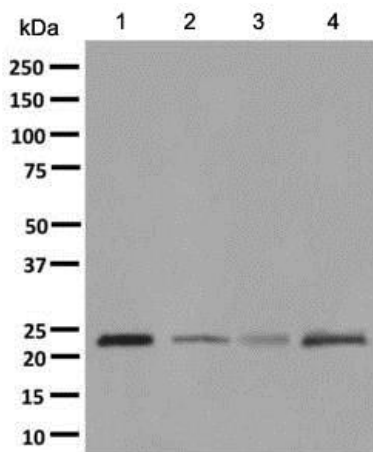
Lanes 1-4: Merged signal (red and green). Green - ab137060 observed at 21 kDa. Red - loading control **ab8245** observed at 36 kDa.

ab137060 Anti-Amino-terminal enhancer of split/AES antibody [EPR8385] was shown to specifically react with Amino-terminal enhancer of split/AES in wild-type HCT cells. Loss of signal was observed when knockout cell line **ab266886** (knockout cell lysate **ab257818**) was used. Wild-type and Amino-terminal enhancer of split/AES knockout samples were subjected to SDS-PAGE. ab137060 and Anti-GAPDH antibody [6C5] - Loading Control (**ab8245**) were incubated overnight at 4°C at 1 in 1000 dilution and 1 in 20000 dilution respectively. Blots were developed with Goat anti-Rabbit IgG H&L (IRDye® 800CW) preadsorbed (**ab216773**) and Goat anti-Mouse IgG H&L (IRDye® 680RD) preadsorbed (**ab216776**) secondary antibodies at 1 in 20000 dilution for 1 hour at room temperature before imaging.



Immunocytochemistry/ Immunofluorescence - Anti-Amino-terminal enhancer of split/AES antibody [EPR8385] (ab137060)

Immunofluorescent staining of HeLa cells labelling Amino-terminal enhancer of split/AES using ab137060 at 1/250 dilution.



Western blot - Anti-Amino-terminal enhancer of split/AES antibody [EPR8385] (ab137060)

All lanes : Anti-Amino-terminal enhancer of split/AES antibody [EPR8385] (ab137060) at 1/1000 dilution

Lane 1 : 293T cell lysate

Lane 2 : HeLa cell lysate

Lane 3 : PC3 cell lysate

Lane 4 : Jurkat cell lysate

Lysates/proteins at 10 µg per lane.

Secondary

All lanes : HRP labelled Goat anti-Rabbit IgG at 1/2000 dilution

Predicted band size: 21 kDa

Why choose a recombinant antibody?



Research with confidence
Consistent and reproducible results



Long-term and scalable supply
Recombinant technology



Success from the first experiment
Confirmed specificity



Ethical standards compliant
Animal-free production

Anti-Amino-terminal enhancer of split/AES antibody
[EPR8385] (ab137060)

Please note: All products are "FOR RESEARCH USE ONLY. NOT FOR USE IN DIAGNOSTIC PROCEDURES"

Our Abpromise to you: Quality guaranteed and expert technical support

- Replacement or refund for products not performing as stated on the datasheet
- Valid for 12 months from date of delivery
- Response to your inquiry within 24 hours
- We provide support in Chinese, English, French, German, Japanese and Spanish
- Extensive multi-media technical resources to help you
- We investigate all quality concerns to ensure our products perform to the highest standards

If the product does not perform as described on this datasheet, we will offer a refund or replacement. For full details of the Abpromise, please visit <https://www.abcam.com/abpromise> or contact our technical team.

Terms and conditions

- Guarantee only valid for products bought direct from Abcam or one of our authorized distributors