


Product datasheet

Anti-Amphiphysin antibody [EP2060Y] ab52646

Recombinant RabMAb

[3 References](#) [3 Images](#)

Overview

Product name	Anti-Amphiphysin antibody [EP2060Y]
Description	Rabbit monoclonal [EP2060Y] to Amphiphysin
Host species	Rabbit
Tested applications	Suitable for: WB, IHC-P Unsuitable for: Flow Cyt, ICC/IF or IP
Species reactivity	Reacts with: Human Predicted to work with: Mouse, Rat 
Immunogen	Synthetic peptide. This information is proprietary to Abcam and/or its suppliers.
Positive control	WB: Human brain lysate. IHC-P: Human brain tissue.
General notes	<p>This product is a recombinant monoclonal antibody, which offers several advantages including:</p> <ul style="list-style-type: none">- High batch-to-batch consistency and reproducibility- Improved sensitivity and specificity- Long-term security of supply- Animal-free production <p>For more information see here.</p> <p>Our RabMAb[®] technology is a patented hybridoma-based technology for making rabbit monoclonal antibodies. For details on our patents, please refer to RabMAb[®] patents.</p>

Properties

Form	Liquid
Storage instructions	Shipped at 4°C. Upon delivery aliquot and store at -20°C. Avoid freeze / thaw cycles.
Storage buffer	pH: 7.20 Preservative: 0.05% Sodium azide Constituents: 0.1% BSA, 40% Glycerol (glycerin, glycerine), 9.85% Tris glycine, 50% Tissue culture supernatant
Purity	Protein A purified
Clonality	Monoclonal
Clone number	EP2060Y

Isotype

IgG

Applications

The Abpromise guarantee

Our **Abpromise guarantee** covers the use of ab52646 in the following tested applications.

The application notes include recommended starting dilutions; optimal dilutions/concentrations should be determined by the end user.

Application	Abreviews	Notes
WB		1/25000 - 1/50000. Detects a band of approximately 128 kDa (predicted molecular weight: 76 kDa).
IHC-P		1/100 - 1/250. Perform heat mediated antigen retrieval before commencing with IHC staining protocol.

Application notes

Is unsuitable for Flow Cyt, ICC/IF or IP.

Target

Function

May participate in mechanisms of regulated exocytosis in synapses and certain endocrine cell types. May control the properties of the membrane associated cytoskeleton.

Tissue specificity

Neurons, certain endocrine cell types and spermatocytes.

Sequence similarities

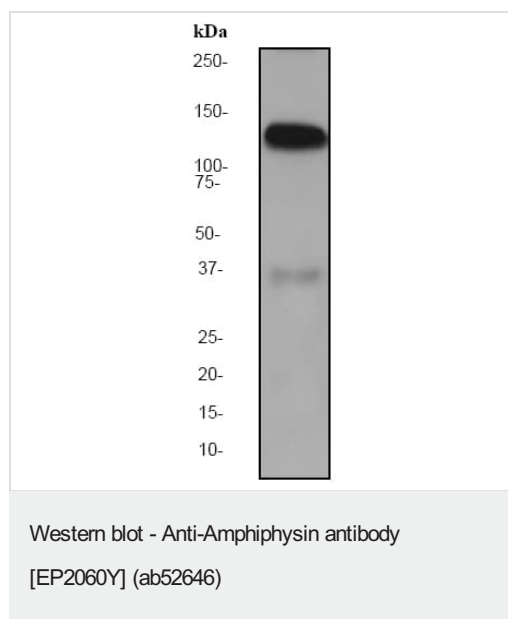
Contains 1 BAR domain.

Contains 1 SH3 domain.

Cellular localization

Cytoplasmic vesicle > secretory vesicle > synaptic vesicle membrane. Cytoplasm > cytoskeleton.

Images



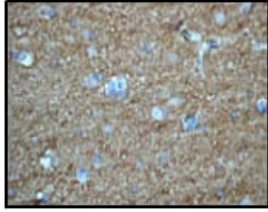
Anti-Amphiphysin antibody [EP2060Y] (ab52646) at 1/100000 dilution + Human brain lysate at 10 µg

Secondary

Goat anti-Rabbit HRP labeled at 1/2000 dilution

Predicted band size: 76 kDa

Observed band size: 128 kDa



Ab52646 (1/100) staining human Amphiphysin in human brain tissue by immunohistochemistry using paraffin embedded tissue.

Perform heat mediated antigen retrieval before commencing with IHC staining protocol.

Immunohistochemistry (Formalin/PFA-fixed paraffin-embedded sections) - Anti-Amphiphysin antibody [EP2060Y] (ab52646)

Why choose a recombinant antibody?



Anti-Amphiphysin antibody [EP2060Y] (ab52646)

Please note: All products are "FOR RESEARCH USE ONLY. NOT FOR USE IN DIAGNOSTIC PROCEDURES"

Our Abpromise to you: Quality guaranteed and expert technical support

- Replacement or refund for products not performing as stated on the datasheet
- Valid for 12 months from date of delivery
- Response to your inquiry within 24 hours
- We provide support in Chinese, English, French, German, Japanese and Spanish
- Extensive multi-media technical resources to help you
- We investigate all quality concerns to ensure our products perform to the highest standards

If the product does not perform as described on this datasheet, we will offer a refund or replacement. For full details of the Abpromise, please visit <https://www.abcam.com/abpromise> or contact our technical team.

Terms and conditions

- Guarantee only valid for products bought direct from Abcam or one of our authorized distributors