


Product datasheet

Anti-AMY-1 antibody [2601C2_2α] ab84847

1 Image

Overview

Product name	Anti-AMY-1 antibody [2601C2_2a]
Description	Mouse monoclonal [2601C2_2a] to AMY-1
Host species	Mouse
Tested applications	Suitable for: WB
Species reactivity	Reacts with: Recombinant fragment Predicted to work with: Human 
Immunogen	Recombinant fragment corresponding to Human AMY-1 aa 32-97.
Positive control	immunising recombinant fragment
General notes	<p>The Life Science industry has been in the grips of a reproducibility crisis for a number of years. Abcam is leading the way in addressing this with our range of recombinant monoclonal antibodies and knockout edited cell lines for gold-standard validation. Please check that this product meets your needs before purchasing.</p> <p>If you have any questions, special requirements or concerns, please send us an inquiry and/or contact our Support team ahead of purchase. Recommended alternatives for this product can be found below, along with publications, customer reviews and Q&As</p>

Properties

Form	Liquid
Storage instructions	Shipped at 4°C. Upon delivery aliquot and store at -20°C or -80°C. Avoid repeated freeze / thaw cycles.
Storage buffer	Preservative: 0.05% Sodium azide Constituents: 1% BSA, PBS
Purity	Protein G purified
Purification notes	Purified from culture supernatant of hybridoma cultured in a medium containing bovine IgG-depleted (approximately 95%) fetal bovine serum. Filtered through a 0.22 µm membrane.
Clonality	Monoclonal
Clone number	2601C2_2a
Isotype	IgG1

Applications

The Abpromise guarantee

Our **Abpromise guarantee** covers the use of ab84847 in the following tested applications.

The application notes include recommended starting dilutions; optimal dilutions/concentrations should be determined by the end user.

Application	Abreviews	Notes
WB		Use at an assay dependent concentration. Predicted molecular weight: 12 kDa.

Target

Function

May control the transcriptional activity of MYC. Stimulates the activation of E box-dependent transcription by MYC.

Tissue specificity

Highly expressed in heart, placenta, pancreas, skeletal muscle and kidney. Also present at low levels in lung.

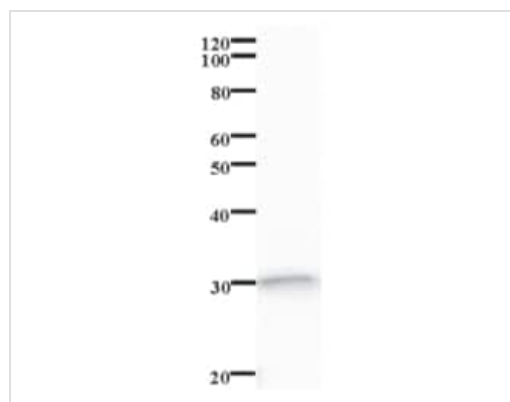
Sequence similarities

Belongs to the AMY1 family.

Cellular localization

Cytoplasm. Nucleus. Mitochondrion. Translocates into the nucleus in the S phase of the cell cycle upon an increase of MYC expression. Found in the mitochondria when associated with AKAP1.

Images



Western blot - Anti-AMY-1 antibody [2601C2_2a]
(ab84847)

Anti-AMY-1 antibody [2601C2_2a] (ab84847) + immunogen
(Human recombinant fragment)

Predicted band size: 12 kDa

Please note: All products are "FOR RESEARCH USE ONLY. NOT FOR USE IN DIAGNOSTIC PROCEDURES"

Our Abpromise to you: Quality guaranteed and expert technical support

- Replacement or refund for products not performing as stated on the datasheet
- Valid for 12 months from date of delivery
- Response to your inquiry within 24 hours

- We provide support in Chinese, English, French, German, Japanese and Spanish
- Extensive multi-media technical resources to help you
- We investigate all quality concerns to ensure our products perform to the highest standards

If the product does not perform as described on this datasheet, we will offer a refund or replacement. For full details of the Abpromise, please visit <https://www.abcam.com/abpromise> or contact our technical team.

Terms and conditions

- Guarantee only valid for products bought direct from Abcam or one of our authorized distributors