

# Anti-Amylin/DAP antibody ab15125

[4 References](#) [1 Image](#)

### Overview

Product name	Anti-Amylin/DAP antibody
Description	Rabbit polyclonal to Amylin/DAP
Host species	Rabbit
Tested applications	<b>Suitable for:</b> IHC-P
Species reactivity	<b>Reacts with:</b> Human
Immunogen	Synthetic peptide within Human Amylin/DAP aa 1 to the C-terminus (N terminal). The exact sequence is proprietary. Database link: <a href="#">P10997</a>
Positive control	Pancreas.
General notes	<p><b>This product is FOR RESEARCH USE ONLY. For commercial use, please contact <a href="mailto:partnerships@abcam.com">partnerships@abcam.com</a>.</b></p> <p>The Life Science industry has been in the grips of a reproducibility crisis for a number of years. Abcam is leading the way in addressing this with our range of recombinant monoclonal antibodies and knockout edited cell lines for gold-standard validation. Please check that this product meets your needs before purchasing.</p> <p>If you have any questions, special requirements or concerns, please send us an inquiry and/or contact our Support team ahead of purchase. Recommended alternatives for this product can be found below, along with publications, customer reviews and Q&amp;As</p>

### Properties

Form	Liquid
Storage instructions	Shipped at 4°C. Upon delivery aliquot and store at -20°C. Avoid freeze / thaw cycles.
Storage buffer	pH: 7.60 Preservative: 0.1% Sodium azide Constituents: PBS, 1% BSA
Purity	Immunogen affinity purified
Clonality	Polyclonal
Isotype	IgG

## Applications

### The Abpromise guarantee

Our **Abpromise guarantee** covers the use of ab15125 in the following tested applications.

The application notes include recommended starting dilutions; optimal dilutions/concentrations should be determined by the end user.

Application	Abreviews	Notes
IHC-P		1/200. Perform heat mediated antigen retrieval with citrate buffer pH 6 before commencing with IHC staining protocol. 1/200 for 10 min at RT. Boil tissue sections in 10mM citrate buffer, pH 6.0 for 10 min followed by cooling at RT for 20 min before commencing with IHC staining protocol.

## Target

### Function

Selectively inhibits insulin-stimulated glucose utilization and glycogen deposition in muscle, while not affecting adipocyte glucose metabolism.

### Sequence similarities

Belongs to the calcitonin family.

### Domain

The mature protein is largely unstructured in the absence of a cognate ligand, and has a strong tendency to form fibrillar aggregates. Homodimerization may be the first step of amyloid formation.

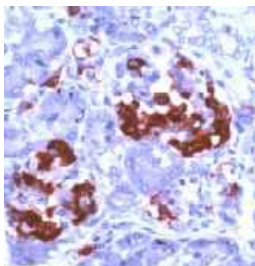
### Post-translational modifications

Amyloid fibrils are degraded by IDE.

### Cellular localization

Secreted.

## Images



ab15125 staining Amylin/DAP in human pancreas by Immunohistochemistry (Formalin/ PFA fixed paraffin embedded tissue sections).

Immunohistochemistry (Formalin/PFA-fixed paraffin-embedded sections) - Anti-Amylin/DAP antibody (ab15125)

**Please note:** All products are "FOR RESEARCH USE ONLY. NOT FOR USE IN DIAGNOSTIC PROCEDURES"

## Our Abpromise to you: Quality guaranteed and expert technical support

- Replacement or refund for products not performing as stated on the datasheet
- Valid for 12 months from date of delivery

- Response to your inquiry within 24 hours
- We provide support in Chinese, English, French, German, Japanese and Spanish
- Extensive multi-media technical resources to help you
- We investigate all quality concerns to ensure our products perform to the highest standards

If the product does not perform as described on this datasheet, we will offer a refund or replacement. For full details of the Abpromise, please visit <https://www.abcam.com/abpromise> or contact our technical team.

#### **Terms and conditions**

---

- Guarantee only valid for products bought direct from Abcam or one of our authorized distributors