

Anti-Amylin/DAP antibody ab55411

[1 References](#) [2 Images](#)

Overview

Product name	Anti-Amylin/DAP antibody
Description	Rabbit polyclonal to Amylin/DAP
Host species	Rabbit
Specificity	ab55411 is expected to detect only the pro-form of Amylin/DAP, not the mature form after removal of the pro-peptide, amino acids 23-31.
Tested applications	Suitable for: IHC-P, WB
Species reactivity	Reacts with: Human
Immunogen	Synthetic peptide corresponding to Human Amylin/DAP.
General notes	<p>The Life Science industry has been in the grips of a reproducibility crisis for a number of years. Abcam is leading the way in addressing this with our range of recombinant monoclonal antibodies and knockout edited cell lines for gold-standard validation. Please check that this product meets your needs before purchasing.</p> <p>If you have any questions, special requirements or concerns, please send us an inquiry and/or contact our Support team ahead of purchase. Recommended alternatives for this product can be found below, along with publications, customer reviews and Q&As</p>

Properties

Form	Liquid
Storage instructions	Shipped at 4°C. Store at -20°C. Stable for 12 months at -20°C.
Storage buffer	<p>pH: 7.40</p> <p>Preservative: 0.02% Sodium azide</p> <p>Constituents: 50% Glycerol, 0.87% Sodium chloride, PBS</p>
Purity	Without Mg+2 and Ca+2
Clonality	Immunogen affinity purified
Isotype	Polyclonal
	IgG

Applications

The Abpromise guarantee

Our **Abpromise guarantee** covers the use of ab55411 in the following tested applications.

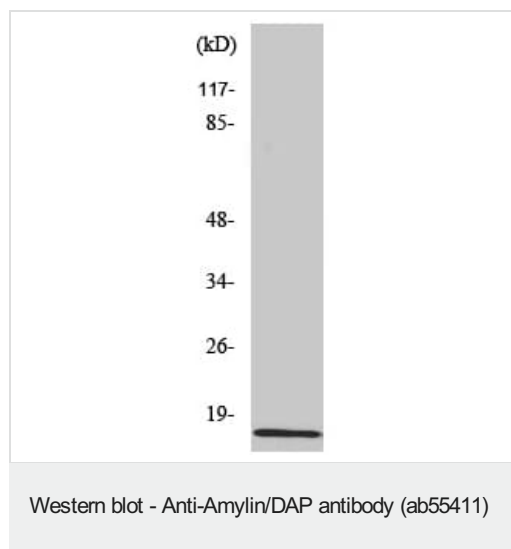
The application notes include recommended starting dilutions; optimal dilutions/concentrations should be determined by the end user.

Application	Abreviews	Notes
IHC-P		Use at an assay dependent concentration.
WB		Use at an assay dependent concentration. Predicted molecular weight: 10 kDa.

Target

Function	Selectively inhibits insulin-stimulated glucose utilization and glycogen deposition in muscle, while not affecting adipocyte glucose metabolism.
Sequence similarities	Belongs to the calcitonin family.
Domain	The mature protein is largely unstructured in the absence of a cognate ligand, and has a strong tendency to form fibrillar aggregates. Homodimerization may be the first step of amyloid formation.
Post-translational modifications	Amyloid fibrils are degraded by IDE.
Cellular localization	Secreted.

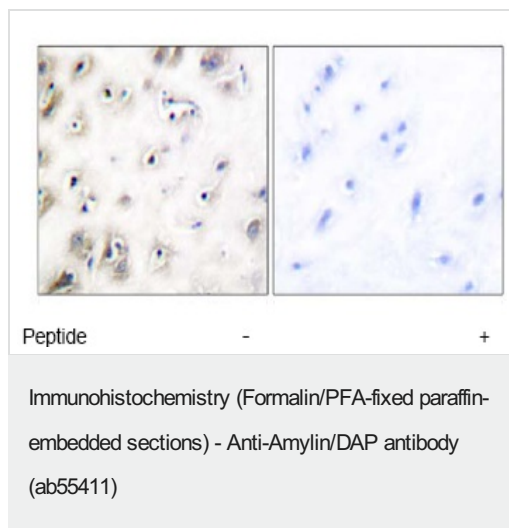
Images



HeLa cell lysate

15ug per lane

5% milk for blocking



Immunohistochemical analysis of paraffin-embedded human brain tissue using ab55411 (1/50 dilution), in the presence or absence of the immunizing peptide.

Please note: All products are "FOR RESEARCH USE ONLY. NOT FOR USE IN DIAGNOSTIC PROCEDURES"

Our Abpromise to you: Quality guaranteed and expert technical support

- Replacement or refund for products not performing as stated on the datasheet
- Valid for 12 months from date of delivery
- Response to your inquiry within 24 hours
- We provide support in Chinese, English, French, German, Japanese and Spanish
- Extensive multi-media technical resources to help you
- We investigate all quality concerns to ensure our products perform to the highest standards

If the product does not perform as described on this datasheet, we will offer a refund or replacement. For full details of the Abpromise, please visit <https://www.abcam.com/abpromise> or contact our technical team.

Terms and conditions

- Guarantee only valid for products bought direct from Abcam or one of our authorized distributors