

Product datasheet

Anti-Amyloid A Component antibody [mcl], prediluted ab7505

[1 References](#) [1 Image](#)

Overview

Product name	Anti-Amyloid A Component antibody [mcl], prediluted
Description	Mouse monoclonal [mcl] to Amyloid A Component, prediluted
Host species	Mouse
Specificity	This antibody reacts with amyloid deposits in all organs and tissues. It reacts specifically with amyloid A protein in the native fibrils as well as fixed fibrils but does not show any reactivity with non-amyloid A fibril protein.
Tested applications	Suitable for: IHC-P
Species reactivity	Reacts with: Human
Immunogen	Recombinant full length protein corresponding to Human Amyloid A Component. Human amyloid A protein coupled to horseradish peroxidase and kininogen.
General notes	<p>The Life Science industry has been in the grips of a reproducibility crisis for a number of years. Abcam is leading the way in addressing this with our range of recombinant monoclonal antibodies and knockout edited cell lines for gold-standard validation. Please check that this product meets your needs before purchasing.</p> <p>If you have any questions, special requirements or concerns, please send us an inquiry and/or contact our Support team ahead of purchase. Recommended alternatives for this product can be found below, along with publications, customer reviews and Q&As</p>

Properties

Form	Liquid
Storage instructions	Shipped at 4°C. Store at +4°C.
Storage buffer	pH: 7.3 Constituent: PBS
Purity	Protein A purified
Clonality	Monoclonal
Clone number	mcl
Isotype	IgG2a
Light chain type	kappa

Applications

The Abpromise guarantee

Our **Abpromise guarantee** covers the use of ab7505 in the following tested applications.

The application notes include recommended starting dilutions; optimal dilutions/concentrations should be determined by the end user.

Application	Abreviews	Notes
IHC-P		Use at an assay dependent concentration.

Target

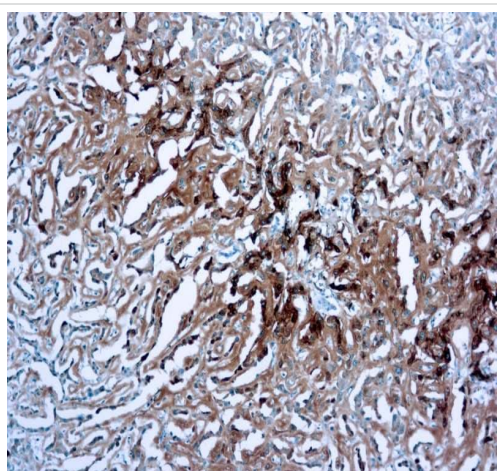
Relevance

Serum amyloid A (SAA) proteins are a family of apolipoproteins associated with high-density lipoprotein (HDL) in plasma. Different isoforms of SAA are expressed constitutively (constitutive SAAs) at different levels or in response to inflammatory stimuli (acute phase SAAs). These proteins are produced predominantly by the liver. The conservation of these proteins throughout invertebrates and vertebrates suggests that SAAs play a highly essential role in all animals.

Cellular localization

Extracellular; Amyloid fibrils.

Images



Immunohistochemistry (Formalin fixed paraffin-embedded sections) analysis of human amyloidosis tissue labelling Amyloid A Component with ab7505.

Immunohistochemistry (Formalin/PFA-fixed paraffin-embedded sections) - Anti-Amyloid A Component antibody [mcl], prediluted (ab7505)

Please note: All products are "FOR RESEARCH USE ONLY. NOT FOR USE IN DIAGNOSTIC PROCEDURES"

Our Abpromise to you: Quality guaranteed and expert technical support

- Replacement or refund for products not performing as stated on the datasheet
- Valid for 12 months from date of delivery

- Response to your inquiry within 24 hours
- We provide support in Chinese, English, French, German, Japanese and Spanish
- Extensive multi-media technical resources to help you
- We investigate all quality concerns to ensure our products perform to the highest standards

If the product does not perform as described on this datasheet, we will offer a refund or replacement. For full details of the Abpromise, please visit <https://www.abcam.com/abpromise> or contact our technical team.

Terms and conditions

- Guarantee only valid for products bought direct from Abcam or one of our authorized distributors