

Product datasheet

Anti-Angiotensin II Type 2 Receptor antibody [EPR3876] ab92445

Recombinant RabMAb

★★★★★ [4 Abreviews](#) [45 References](#) [3 Images](#)

Overview

Product name	Anti-Angiotensin II Type 2 Receptor antibody [EPR3876]
Description	Rabbit monoclonal [EPR3876] to Angiotensin II Type 2 Receptor
Host species	Rabbit
Tested applications	Suitable for: WB, IP Unsuitable for: Flow Cyt, ICC/IF or IHC-P
Species reactivity	Reacts with: Mouse, Rat, Human
Immunogen	Synthetic peptide within Human Angiotensin II Type 2 Receptor aa 300-400 (C terminal). The exact sequence is proprietary.
Positive control	WB: HepG2, Human heart, Mouse heart, and Rat heart lysates. IP: Mouse heart cells.
General notes	This product is a recombinant monoclonal antibody, which offers several advantages including: <ul style="list-style-type: none">- High batch-to-batch consistency and reproducibility- Improved sensitivity and specificity- Long-term security of supply- Animal-free production For more information see here . Our RabMAb [®] technology is a patented hybridoma-based technology for making rabbit monoclonal antibodies. For details on our patents, please refer to RabMAb[®] patents .

Properties

Form	Liquid
Storage instructions	Shipped at 4°C. Store at -20°C. Stable for 12 months at -20°C.
Storage buffer	pH: 7.20 Preservative: 0.01% Sodium azide Constituents: PBS, 40% Glycerol, 0.05% BSA
Purity	Protein A purified
Clonality	Monoclonal
Clone number	EPR3876

Isotype

IgG

Applications

The Abpromise guarantee

Our **Abpromise guarantee** covers the use of ab92445 in the following tested applications.

The application notes include recommended starting dilutions; optimal dilutions/concentrations should be determined by the end user.

Application	Abreviews	Notes
WB	★★★★★ (4)	1/1000 - 1/10000. Predicted molecular weight: 41 kDa.
IP		1/10 - 1/100.

Application notes

Is unsuitable for Flow Cyt, ICC/IF or IHC-P.

Target

Function

Receptor for angiotensin II. Cooperates with MTUS1 to inhibit ERK2 activation and cell proliferation.

Tissue specificity

In adult, highly expressed in myometrium with lower levels in adrenal gland and fallopian tube. Very highly expressed in fetal kidney and intestine.

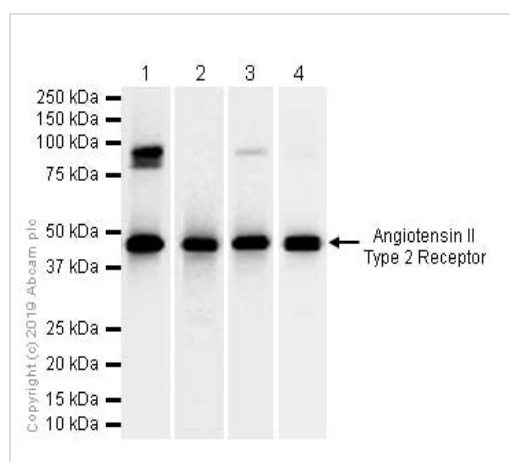
Sequence similarities

Belongs to the G-protein coupled receptor 1 family.

Cellular localization

Cell membrane.

Images



Western blot - Anti-Angiotensin II Type 2 Receptor antibody [EPR3876] (ab92445)

All lanes : Anti-Angiotensin II Type 2 Receptor antibody [EPR3876] (ab92445) at 1/1000 dilution (Purified)

Lane 1 : HepG2 (Human hepatocellular carcinoma epithelial cell) whole cell lysates

Lane 2 : Human heart lysates

Lane 3 : Mouse heart lysates

Lane 4 : Rat heart lysates

Lysates/proteins at 15 µg per lane.

Secondary

All lanes : Goat Anti-Rabbit IgG (HRP) with minimal cross-reactivity with human IgG at 1/2000 dilution

Predicted band size: 41 kDa

Observed band size: 41 kDa



Immunoprecipitation - Anti-Angiotensin II Type 2 Receptor antibody [EPR3876] (ab92445)

ab92445 (purified) at 1/20 dilution (0.2ug) immunoprecipitating Angiotensin II Type 2 Receptor in Mouse heart lysate .

Lane 1 (input): Mouse heart lysate 10ug

Lane 2 (+): ab92445 & Mouse heart lysate

Lane 3 (-): Rabbit monoclonal IgG (**ab172730**) instead of ab92445 in Mouse heart lysate

For western blotting, VeriBlot for IP Detection Reagent (HRP)

(**ab131366**) was used at 1/1000 dilution.

Blocking and diluting buffer: 5% NFDm/TBST.

Why choose a recombinant antibody?



Research with confidence
Consistent and reproducible results



Long-term and scalable supply
Recombinant technology



Success from the first experiment
Confirmed specificity



Ethical standards compliant
Animal-free production

Anti-Angiotensin II Type 2 Receptor antibody [EPR3876] (ab92445)

Please note: All products are "FOR RESEARCH USE ONLY. NOT FOR USE IN DIAGNOSTIC PROCEDURES"

Our Abpromise to you: Quality guaranteed and expert technical support

- Replacement or refund for products not performing as stated on the datasheet
- Valid for 12 months from date of delivery
- Response to your inquiry within 24 hours
- We provide support in Chinese, English, French, German, Japanese and Spanish
- Extensive multi-media technical resources to help you
- We investigate all quality concerns to ensure our products perform to the highest standards

If the product does not perform as described on this datasheet, we will offer a refund or replacement. For full details of the Abpromise, please visit <https://www.abcam.com/abpromise> or contact our technical team.

Terms and conditions

- Guarantee only valid for products bought direct from Abcam or one of our authorized distributors