


# Anti-Anillin antibody ab99352

[4 References](#) [2 Images](#)

## Overview

Product name	Anti-Anillin antibody
Description	Rabbit polyclonal to Anillin
Host species	Rabbit
Tested applications	<b>Suitable for:</b> WB, IP
Species reactivity	<b>Reacts with:</b> Human <b>Predicted to work with:</b> Chimpanzee, Rhesus monkey, Gorilla, Orangutan 
Immunogen	Synthetic peptide, corresponding to a region within N terminal amino acids 1-50 of Human Anillin (NP_061155.2)
General notes	<p>The Life Science industry has been in the grips of a reproducibility crisis for a number of years. Abcam is leading the way in addressing this with our range of recombinant monoclonal antibodies and knockout edited cell lines for gold-standard validation. Please check that this product meets your needs before purchasing.</p> <p>If you have any questions, special requirements or concerns, please send us an inquiry and/or contact our Support team ahead of purchase. Recommended alternatives for this product can be found below, along with publications, customer reviews and Q&amp;As</p>

## Properties

Form	Liquid
Storage instructions	Shipped at 4°C. Upon delivery aliquot and store at -20°C. Avoid freeze / thaw cycles.
Storage buffer	pH: 6.8 Preservative: 0.09% Sodium azide Constituents: Tris buffered saline, 0.1% BSA
Purity	Immunogen affinity purified
Clonality	Polyclonal
Isotype	IgG

## Applications

**The Abpromise guarantee** Our **Abpromise guarantee** covers the use of ab99352 in the following tested applications.

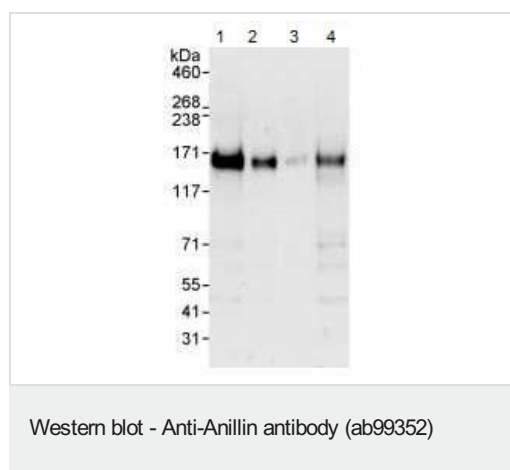
The application notes include recommended starting dilutions; optimal dilutions/concentrations should be determined by the end user.

Application	Abreviews	Notes
WB		1/2000 - 1/10000. Predicted molecular weight: 124 kDa.
IP		Use a concentration of 2 - 5 µg/ml.

## Target

<b>Function</b>	Required for cytokinesis. Essential for the structural integrity of the cleavage furrow and for completion of cleavage furrow ingression.
<b>Tissue specificity</b>	Ubiquitously expressed. Present at highest levels in the brain, at high levels in the placenta and testis, at intermediate levels in the intestine, ovary, skeletal muscle and thymus and at lower levels in heart, kidney, liver, lung, pancreas, prostate and spleen. Overexpressed in many tumor types including breast, colorectal, endometrial, hepatic, kidney, lung, ovarian and pancreatic tumors.
<b>Sequence similarities</b>	Contains 1 PH domain.
<b>Developmental stage</b>	Expressed in fetal brain, heart, kidney, liver, lung, skeletal muscle, spleen and thymus. In dividing cells expression increases during S and G2 phases, peaks at mitosis and subsequently drops as cells enter G1 phase.
<b>Post-translational modifications</b>	Phosphorylated during mitosis. Ubiquitinated, and this requires FZR1/CDH1.
<b>Cellular localization</b>	Nucleus. Cytoplasm > cytoskeleton. Cytoplasm > cell cortex. Mainly found in the nucleus during interphase. Colocalizes with cortical F-actin upon nuclear envelope breakdown in mitosis and subsequently concentrates in the area of the prospective contractile ring in anaphase. This pattern persists until telophase, when the protein becomes concentrated in the midbody.

## Images



**All lanes :** Anti-Anillin antibody (ab99352) at 0.04 µg/ml

**Lane 1 :** HeLa whole cell lysate at 50 µg

**Lane 2 :** HeLa whole cell lysate at 15 µg

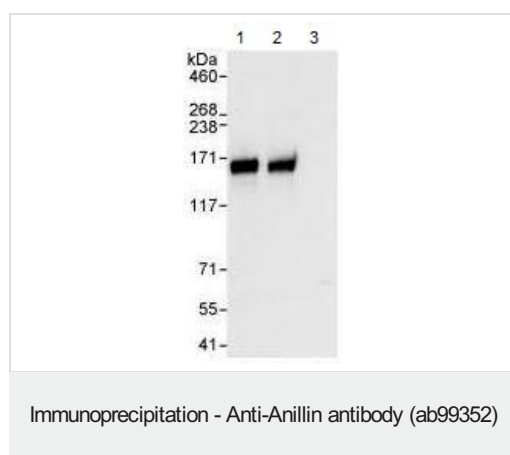
**Lane 3 :** HeLa whole cell lysate at 5 µg

**Lane 4 :** 293T cell lysate at 50 µg

Developed using the ECL technique.

**Predicted band size:** 124 kDa

**Exposure time:** 30 seconds



Detection of Human Anillin by Western Blot and Immunoprecipitation. Samples: Whole cell lysate from HeLa (1 mg for IP, 20% of IP loaded). ab99352 used for WB at 1 µg/ml and used for IP at 3 µg/mg lysate (lane 1). Anillin was also immunoprecipitated by another rabbit anti-Anillin antibody (lane 2) and control IgG (lane 3). Detection Chemiluminescence with exposure times of 3 seconds

**Please note:** All products are "FOR RESEARCH USE ONLY. NOT FOR USE IN DIAGNOSTIC PROCEDURES"

### Our Abpromise to you: Quality guaranteed and expert technical support

- Replacement or refund for products not performing as stated on the datasheet
- Valid for 12 months from date of delivery
- Response to your inquiry within 24 hours
- We provide support in Chinese, English, French, German, Japanese and Spanish
- Extensive multi-media technical resources to help you
- We investigate all quality concerns to ensure our products perform to the highest standards

If the product does not perform as described on this datasheet, we will offer a refund or replacement. For full details of the Abpromise, please visit <https://www.abcam.com/abpromise> or contact our technical team.

### Terms and conditions

- Guarantee only valid for products bought direct from Abcam or one of our authorized distributors