


Anti-ANKHD1 antibody ab117788

[2 References](#) [2 Images](#)

Overview

Product name	Anti-ANKHD1 antibody
Description	Rabbit polyclonal to ANKHD1
Host species	Rabbit
Tested applications	Suitable for: WB, IP
Species reactivity	Reacts with: Human Predicted to work with: Gorilla, Orangutan 
Immunogen	Synthetic peptide, corresponding to a region within amino acids 25-75 of Human ANKHD1 (NP_060217.1).
Positive control	HeLa and 293T whole cell lysates.
General notes	<p>The Life Science industry has been in the grips of a reproducibility crisis for a number of years. Abcam is leading the way in addressing this with our range of recombinant monoclonal antibodies and knockout edited cell lines for gold-standard validation. Please check that this product meets your needs before purchasing.</p> <p>If you have any questions, special requirements or concerns, please send us an inquiry and/or contact our Support team ahead of purchase. Recommended alternatives for this product can be found below, along with publications, customer reviews and Q&As</p>

Properties

Form	Liquid
Storage instructions	Shipped at 4°C. Upon delivery aliquot and store at -20°C. Avoid freeze / thaw cycles.
Storage buffer	pH: 7 Preservative: 0.09% Sodium azide Constituent: 99% Tris citrate/phosphate
Purity	pH 7-8 Immunogen affinity purified
Purification notes	ab117788 was affinity purified using an epitope specific to ANKHD1 immobilized on solid support.
Clonality	Polyclonal

Isotype

IgG

Applications

The Abpromise guarantee

Our **Abpromise guarantee** covers the use of ab117788 in the following tested applications.

The application notes include recommended starting dilutions; optimal dilutions/concentrations should be determined by the end user.

Application	Abreviews	Notes
WB		1/2000 - 1/10000. Predicted molecular weight: 269 kDa.
IP		Use at 2-10 µg/mg of lysate.

Target

Function

May play a role as a scaffolding protein that may be associated with the abnormal phenotype of leukemia cells. Isoform 2 may possess an antiapoptotic effect and protect cells during normal cell survival through its regulation of caspases.

Tissue specificity

Ubiquitous with high expression in cervix, spleen and brain. Expressed in hematopoietic cells with increased expression in leukemia cells. Isoform 2 is highly expressed in spleen with almost no expression in muscle and brain.

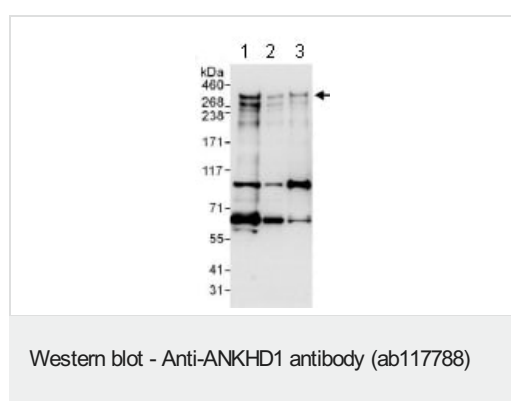
Sequence similarities

Belongs to the mask family.
Contains 25 ANK repeats.
Contains 1 KH domain.

Cellular localization

Cytoplasm.

Images



All lanes : Anti-ANKHD1 antibody (ab117788) at 0.1 µg/ml

Lane 1 : 293T whole cell lysates at 50 µg

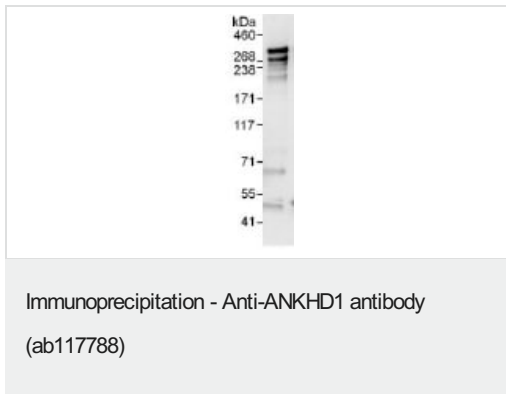
Lane 2 : 293T whole cell lysates at 15 µg

Lane 3 : HeLa whole cell lysates at 50 µg

Developed using the ECL technique.

Predicted band size: 269 kDa

Exposure time: 30 seconds



Detection of ANKHD1 by Western Blot of Immunoprecipitate.
ab117788 at 1 µg/ml staining ANKHD1 in 293T whole cell lysate immunoprecipitated using ab117788 at 6 µg/mg lysate (1 mg/IP; 20% of IP loaded/lane).
Detection: Chemiluminescence with exposure time of 10 seconds.

Please note: All products are "FOR RESEARCH USE ONLY. NOT FOR USE IN DIAGNOSTIC PROCEDURES"

Our Abpromise to you: Quality guaranteed and expert technical support

- Replacement or refund for products not performing as stated on the datasheet
- Valid for 12 months from date of delivery
- Response to your inquiry within 24 hours
- We provide support in Chinese, English, French, German, Japanese and Spanish
- Extensive multi-media technical resources to help you
- We investigate all quality concerns to ensure our products perform to the highest standards

If the product does not perform as described on this datasheet, we will offer a refund or replacement. For full details of the Abpromise, please visit <https://www.abcam.com/abpromise> or contact our technical team.

Terms and conditions

- Guarantee only valid for products bought direct from Abcam or one of our authorized distributors